

WCC by Rémy

WebCam Control GUI.

Requirements :

1. rxutilex (dll)
2. webcam.exe (latest build including audio support but don't enable audio yet to prevent TRAP000E or use Lars USB driver or USB 12.07 32bits as soon it is released)
3. ffmpeg & ffprobe (from ffmpeg package 4.x – was well tested with 4.0.2)

Installation instruction :

Put WCC under webcam path if ffmpeg is available under a path from config.sys PATH statement
Else put WCC under ffmpeg path

Add following parameters to the WCC.exe properties

opt1 opt2 opt3

opt1 could be TR (top right = default) or TL (top left) or BR (bottom right) or BL (bottom left)

opt2 Add /n parameters

opt3 webcam path e.g. C:\programs\webcam

Create a shadow under startup folder to get easy control of your webcam.

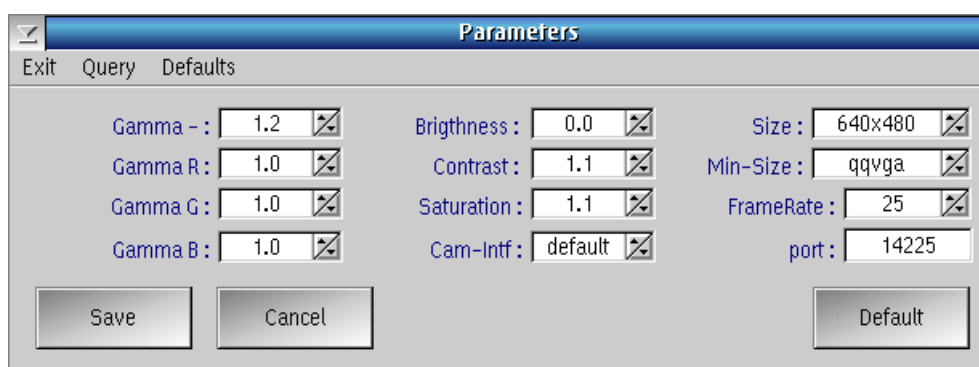
Run WCC.

WCC functions :

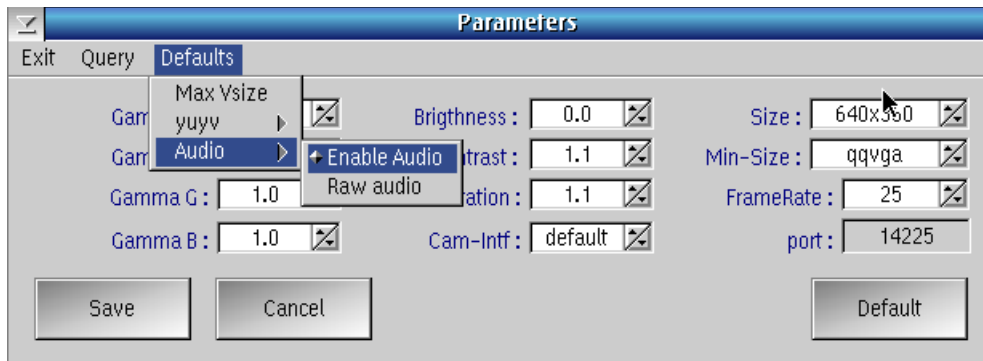
- By default, webcam isn't started
- To configure webcam options, use [S] setting button available when [WebCam OFF]
- To start webcam, click on [WebCam OFF] green button
- To show the webcam output, use [show] for a normal display or [] button for a minimized size
- To stop the the display, close ffmpeg window or click on [WebCam ON] red button



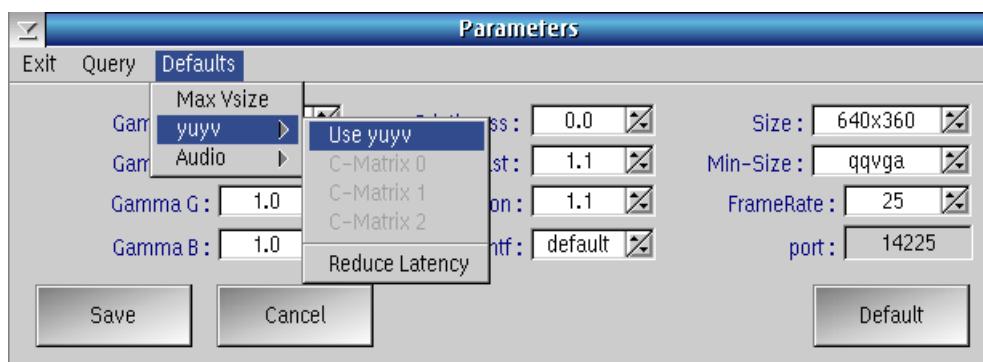
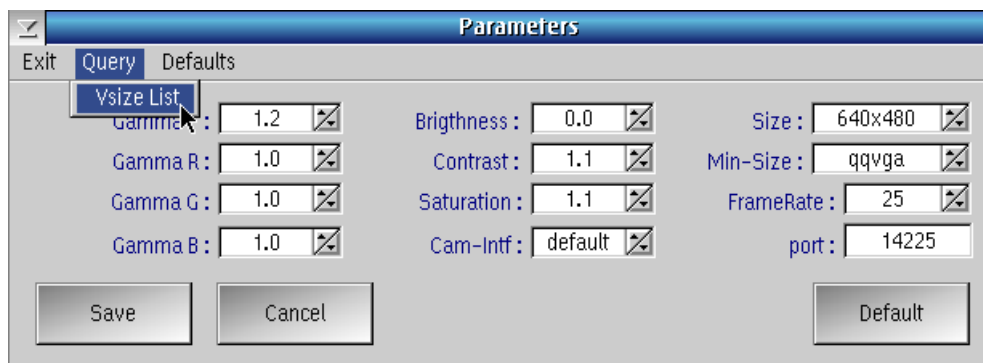
About setting :



- You'll find the exit button (close WCC)
- Query – Vsize list (check and update video size list with all supported webcam video sizes)
- Default - Max Vsize (will check for default size and framerate supported by the webcam)
- Default - yuyv - use yuyv (switch from mjpeg to yuyv frames out of webcam)
 - Add extra conversion Matrix and xfert option (0 or 1 or 2) if needed
 - reduce latency (adds 5fps to selected frame rate)
- Default – Audio (enable audio support) ***** Use Lars USB driver or usb fix to prevent TRAP000e *****
 - Raw audio, select raw audio out of webcam (older build) else use wav



(currently, with Audio enabled, Audio is played through a second ffmpeg process. Audio is played after video with a delay up to about 2s with a reduced volume level to reduce larsen issue. Audio is mostly usefull with ffmpeg to create video out of the webcam)



- Gamma... Adjust any gamma options as needed (default may be just right). If the video is dark, try first to change Gamma value before Brightness
- Brightness

- Contrast
- Saturation increase or decrease color saturation
- Size size for normal display mode (show) – Run Query « Vsize List » to populate all supported sizes else only 640x480 is proposed
- Min-size size for minimized view ([])
- FrameRate Select framerate supported by the webcam. To prevent latency, +5fps is automatically added. If you already have big latency, try to set next framerate value
- Cam_intf Select other interface (Do not change if you don't know what you do)
- port Port for http connection (always enabled with default port number)
- Default Resets to default initial values

Note : All setting are saved into an ini file.