

# VOICE Newsletter - Contact Information



**Virtual OS/2 International  
Consumer Education**

---

[editor@os2voice.org](mailto:editor@os2voice.org)

[ [Index](#) ]

VOICE Home Page: <http://www.os2voice.org>

For the latest news on VOICE and OS/2, please check our web site news page - <http://www.os2voice.org/whatsnew.html>

Previous issues of the VOICE Newsletter are available at our website <http://www.os2voice.org/newsletters.html> and from the hobbess ftp site <ftp://hobbess.nmsu.edu/pub/os2/info/newsltr/voice>.

To subscribe to any of the VOICE mailing Lists please go to our web site <http://www.os2voice.org/maillinglists.html>

If you have any OS/2 or VOICE news you would like to submit for the next issue of VOICE Newsletter, please send it to Mark Dodel ([editor@os2voice.org](mailto:editor@os2voice.org)) VOICE Reporter by the 15th of the preceding month.

[editor@os2voice.org](mailto:editor@os2voice.org)

[[Index](#)]

---

## VOICE Newsletter - Index



## Index

Volume7, Number 1

[Future events Calendar](#)

[News](#)

[Features Section](#)

[What is VOICE?](#)

[Officers/Staff](#)

[Membership](#)

[Sponsors](#)

<http://www.walkabout.org/>

If you have OS/2 or VOICE related news you would like to see added to the next issue of the VOICE Newsletter please send it to <mailto:editor@os2voice.org>

# VOICE Newsletter - VOICE Events Calendar

## VOICE Future Events Calendar

As part of our ongoing effort to help broaden the knowledge of the OS/2 community on topics of interest, VOICE has the following IRC Speakup events/general meetings scheduled. For detailed information on VOICE meetings, time, and IRC client software, visit our website at <http://de.os2voice.org/>. For the logs of previous VOICE Speakup events please go to <http://de.os2voice.org/transcripts.html> VOICE also maintains an event calendar on our website at <http://de.os2voice.org/calendar.html>. For a quick way to convert times on this page to your local time zone, try <http://www.timezoneconverter.com/cgi-bin/tzc.tzc>.

If you or your organization has any upcoming events you would like placed on the calendar, please send an email to [editor@os2voice.org](mailto:editor@os2voice.org) with the Date and time and a brief (25 words or less) description of the event at least a month prior to the scheduled date.

Date	Time	Description
January		
01. January 2003	10:00PM EST (03:00 GMT)	<b>The SCOUG Help Desk</b> meets in #SCOUG on WEBBnet every Wednesday. <b>Happy New Year!</b>
05. January 2003	3:00PM EST (20:00 GMT)	<b>The Warp Doctor team</b> meets in #warpdoctor on WEBBnet every Sunday.
06. January	8:00PM EST (01:00 GMT)	<b>General VOICE Meeting</b> on IRC in #voice. All are welcome.

2003

08. 10:00PM EST The SCOUG Help Desk meets in #SCOUG  
January (03:00 GMT) on WEBBnet every Wednesday.  
2003

12. 3:00PM EST The Warp Doctor team meets in  
January (20:00 GMT) #warpdoctor on WEBBnet every Sunday.  
2003

15. 10:00PM EST The SCOUG Help Desk meets in #SCOUG  
January (03:00 GMT) on WEBBnet every Wednesday.  
2003

19. 3:00PM EST The Warp Doctor team meets in  
January (20:00 GMT) #warpdoctor on WEBBnet every Sunday.  
2003

20. 8:00PM EST General VOICE Meeting on IRC in  
January (01:00 GMT) #voice. All are welcome.  
2003

22. 10:00PM EST The SCOUG Help Desk meets in #SCOUG  
January (03:00 GMT) on WEBBnet every Wednesday.  
2003

26. 3:00PM EST The Warp Doctor team meets in  
January (20:00 GMT) #warpdoctor on WEBBnet every Sunday.  
2003

29. 10:00PM EST The SCOUG Help Desk meets in #SCOUG  
January (03:00 GMT) on WEBBnet every Wednesday.  
2003

February

02. 3:00PM EST The Warp Doctor team meets in  
February (20:00 GMT) #warpdoctor on WEBBnet every Sunday.  
2003

03. 8:00PM EST General VOICE Meeting on IRC in  
February (01:00 GMT) #voice. All are welcome.  
2003

05. 10:00PM EST The SCOUG Help Desk meets in #SCOUG  
February (03:00 GMT) on WEBBnet every Wednesday.  
2003

09. 3:00PM EST The Warp Doctor team meets in  
February (20:00 GMT) #warpdoctor on WEBBnet every Sunday.  
2003

12. 10:00PM EST The SCOUG Help Desk meets in #SCOUG  
February (03:00 GMT) on WEBBnet every Wednesday.  
2003

16. 3:00PM EST The Warp Doctor team meets in  
February (20:00 GMT) #warpdoctor on WEBBnet every Sunday.  
2003

17. 8:00PM EST General VOICE Meeting on IRC in  
February (01:00 GMT) #voice. All are welcome.  
2003

19. 10:00PM EST The SCOUG Help Desk meets in #SCOUG  
February (03:00 GMT) on WEBBnet every Wednesday.  
2003

23. 3:00PM EST The Warp Doctor team meets in  
February (20:00 GMT) #warpdoctor on WEBBnet every Sunday.  
2003

26. 10:00PM EST The SCOUG Help Desk meets in #SCOUG  
February (03:00 GMT) on WEBBnet every Wednesday.  
2003

-----

## VOICE Newsletter - VOICE News - Index

Page 1: November 29 -  
November 30

Page 2: December 01 -  
December 07

Page 3: December 08 -  
December 14

Page 4: December 15 -  
December 21

Page 5: December 22 -  
December 28

Page 7: OS/2 User Groups  
News

---

## VOICE Newsletter - VOICE News Page 1.

### News Page 1

#### November 30

New ISDN-PCMCIA driver from HST

There are new drivers available for the HST ISDN PCMCIA cards

\* SAPHIR II C PC-Card for DSS1/1TR6 V2.5(rev.03)

\* SAPHIR III D PCI for DSS1/1TR6 V2.5(rev.03)

The sapphire Capi is among other things regarded for its high security from hacker accesses. Allegedly it is not manipulatable from the outside, which one can not say for the few Capi's of other manufacturers.

URL: <http://www.hstnet.de/>

---

#### November 29

Extract Microsoft Cabinet files

This is OS/2 port of cabextract 0.6 - a program to extract Microsoft Cabinet files (.CAB) used in win32 software installation/distribution.

EMX run time required

<http://hobbes.nmsu.edu/pub/incoming/cabextract.zip>

<http://hobbes.nmsu.edu/cgi-bin/h-search?key=cabextract.zip>

---

#### November 29

PMNapster 3.6.4 for OS/2 and eCS

Multiconnection and Multithreaded Napster clone for OS/2 and eCS.

Program URL: <http://www.os2world.com/pmnapster>

<http://hobbes.nmsu.edu/pub/incoming/pmnapster364.zip>

<http://hobbes.nmsu.edu/cgi-bin/h-search?key=pmnapster364.zip>

---

November 29

Microsoft's TrueType core fonts on OS/2 Warp or eCS

This package contain all tool and scripts needed to download and install M\$ core TTF fonts on OS/2. These fonts are used by many pages on the internet and some win32 applications. As for me, microsoft fonts look better then default OS/2. These fonts contain correct unicode table, so e.g. russian pages will look correctly.

<http://hobbes.nmsu.edu/pub/incoming/msfontpack.zip>

<http://hobbes.nmsu.edu/cgi-bin/h-search?key=msfontpack.zip>

---

## VOICE Newsletter - VOICE News Continued Page 2.

### News Page 2

#### December 07

eComStation's new Australian Web Site

December 7th 2002

Orion Solutions launches major update to both the Orion Solutions <http://www.orion-solutions.com.au/> and eComStation (australia) <http://www.ecomstation.com.au/> web sites.

The release is intended to provide an easier to use web site for existing and new users.

The sites are also being hosted internally for the first time, and we would be interested to know if the speed is acceptable to users. (however we do expect that it may run slowly after this announcement!)

Secondly we are officially announcing the ability to pre-order eCS 1.1 which, at this stage, we expect to be shipping at the beginning of February 2003.

Lastly we hope you all have a joyful holiday season. May you cherish this time with family and friends. Enjoy :-)

Yours Sincerely

Mark A Rogers  
Principal Consultant  
Orion Solutions <http://www.orion-solutions.com.au/>  
PO BOX 1492  
Wodonga Vic 3689  
Ph 02 6056 5455  
International +61 2 6056 5455  
Fax 02 6024 1042

---

#### December 07

Test NIC drivers...

I need OS/2 users there help. I don't know if VIA has yet released the NIC drivers I have for OS/2. I need people that can test the drivers that have a VIA NIC chipset build on there motherboard. PLEASE NOTE, don't confuse the NIC chipset from VIA with Realtek 8139 or 8129 chipsets also found onboard on a lot of motherboards with a VIA motherboard chipset.

I have already been in contact with VIA about there AC 97 audiodriver . Thats why there have been 1 or 2 new releases. People who get system sounds under OS/2 that are played fast I can not help. The chipset on your montherboard (from VIA) only then supports single rate. That means playback and recording at 16 bit 48 Khz Stereo. The drivers are not perfect and I will send them some more bug reports soon.

I don't have vendor and chipset ID's. VIA has been asking if I can give feedback. If have the following drivers for which I need testers:

For the chipset:  
8231&8233v24  
6102v24VIA

The NIC chipsets can also be integrated on the montherboard chipset (meaning not visable on the motherboard it self). If VIA has already released the drivers let me know if you have any bugs with the drivers.

## December 06

New kernels on testcase

<ftp://testcase.boulder.ibm.com/ps/fromibm/os2/>

Dec 6 12:37 1,069,487 smp20021205.zip  
Dec 6 12:37 1,172,190 smp20021205d.zip  
Dec 6 12:37 1,012,586 uni20021205.zip  
Dec 6 12:37 1,107,775 uni20021205d.zip  
Dec 6 12:37 1,015,033 w420021205.zip  
Dec 6 12:37 1,110,101 w420021205d.zip

[Moderator's note: As always these are not officially supported by IBM unless they tell you to use them. Please send any followup to comp.os.os2.bugs on usenet. Also note that files are only on IBM's testcase for 2-3 days, so if you want to try these get them now. Make certain you back up any files replaced and don't try these on a production system. Read any readme file before applying any changes. If your system is working well, and you have no problems addressed by these updates, do yourself a favour and don't mess with this. You have been warned.

From the readme.txt accompanying these kernel files, changes since the last testcase kernels(20020822):

Fixes to problems that exist in released code:

20021010 revision 14.091c

- put back in the IRQ fix in os2ldr. seems to be ok
- took clock01 out of the package.

20021028 revision 14.093a

PJ28871 trap with TRACEBUF= .../D=ALL in config.sys

- fix an obscure trap in KernelFaultEntry on debug kernel only
- fix a trap if Kern32ReadFileAt called and an ISS is installed

20021205

- fix a trap if Kern32ReadFileAt called and an ISS is installed (the fix was not correct in 1028)
- trap in w\_dup trying to do DosDupHandle to target handle outside range of current max file handle number PJ28941 trap 000e routine VMAliasToAlias doing procdumps on some systems]

---

## December 06

New WVGUI

PLEASE! Remove VIDEO2.INI first!

05.12.2002

- \* mp3 audio seek fix

02.12.2002

- \* sometimes sound dissappears after pause. possible fixed :)
- \* WMA2 decoding moved to native

22.11.2002

- \* Movie window is not closing when loop enabled
- \* Movie window is not changing size, when loop or movie window enabled

07.11.2002

+ new hotkeys for movie window:

Q/A - Sync correction +/-

Warp Overlay only hotkeys:

W/S - Hardware brigtness (Pressed with control will reset to default)

E/D - Hardware contrast (Pressed with control will reset to default)

T/G - Hardware saturation (Pressed with control will reset to default)

Y/H - Hardware hue (Pressed with control will reset to default)

06.11.2002

+ single copy running: when wv already running, second wv just exit if second wv have file name as parametr, wv pass it to first copy, which start play it immedeately

- \* memory leaks

- \* trap, when media without sound plays after media with sound + postprocess (seems doesnt works, but eats cpu :)

\* WV engine changes:

- always latest libavcodec :)
- avi sync fix
- mpeg2 3DNow -> MMXEXT for motion compensation
- WMA 1/2 native audio decoding (ffmpeg)
- increase A/V threads stack
- audio playback ~codecs fixes
- sync fixes

Program URL: <http://os2.kiev.ua/>

<http://www.laemmlin.net/mirror/wvgui/wvgui20021205.zip>

---

## December 06

DFSee 5.06 released; LVM/VCU replacement

DFSee is the SWISS-ARMY-KNIFE for disk and filesystem problems. With FDISK-like displays, analysis and recovery, FIX commands, UNDELETE for HPFS/NTFS, imaging and cloning. More details at:

<http://www.dfsee.com/dfsee.htm>

With the 5.06 version DFSee can now completely replace LVM.EXE and VCU.EXE for compatibility-volumes, modify AND create ... Plus it uses an easy to operate dialog-window for LVM now!

Direct download links:

<http://www.dfsee.com/dfsee/dfsee506.zip>

<http://hobbes.nmsu.edu/pub/os2/util/disk/dfsee506.zip>

<http://hobbes.nmsu.edu/pub/incoming/dfsee506.zip>

Most important functional changes:

- LVM Interactive dialog, create NEW info, many new options! - CREATE -L option creates LVM info; Smart FAT type: 01/04/06/0b/0c - FDISK Made almost modeless, commands now work from all FS modes - VCU New command, clear old info and generate new default LVM info - MODE New command, set display size and windowing dynamically - PART -c or parameters '+c' or '++c' performs CHECK on each partition - RESIZE Automatic execution of LVM command after resize

Check DFS\*.TXT files for details, all changes listed in DFSHIST.TXT

Registering DFSee will give you the right to use all 5.xx versions and get support plus a reasonable amount of assistance by email. Existing 4.xx registrations can be upgraded to 5.xx as well.

But even more important, it enables further development of DFSee!

Regards, Jan van Wijk

---

## December 05

OS/2 Device Driver for WatchCard PCI (Antrax GmbH) V1.0

<http://www.antrax.de>

[Note: Site is in German. Reading it via Babelfish <http://babelfish.altavista.com> I'm still not sure what the WatchCard is for. It appears to be an addin ISA or PCI card that monitors the PC for system errors or looping conditions and performs a hardware reset.]

<http://hobbes.nmsu.edu/pub/incoming/watchrd10.zip>

<http://hobbes.nmsu.edu/cgi-bin/h-search?key=watchrd10.zip>

---

## December 04

osFree snapshot released

osFree binary snapshot

December 5, 2002

<http://www.osfree.org/>

### 1. General status

This release is not intended for production use. Its goal is to conclude the work being made on the open-source osFree project. The released set comprises several command-line utilities, requiring a working OS/2-compatible system.

Many of you may ask what the need for these utilities are. You may already have a copy of OS/2 Warp and no need for another ansi.exe. The answer is simply opensource. While you own a binary copy of ansi.exe you have not rights to the source nor may you spread the copy you have. To build a new OS compatible with OS/2 all tools are needed not just a new kernel. The osFree team are actively looking for more developers. If you feel you have the interest in an opensource OS/2 dont hesitate to join. It should be noted that no component has been subjected to extensive testing yet, so the components may only be \*deemed\* complete because the required functionality is implemented. The file (osfree-snapshot.zip) can be found in the incoming directory at hobbes and on several other ftp sites.

### 2. Contacting the development team

A web site dedicated to the development is at <http://www.osfree.org/>

To join a public discussion forum, please sign up at: <http://groups.yahoo.com/group/osfree>

FTP site: <ftp://jma.dnsalias.com/osfree>

FTP write-only "drop zone": <ftp://jma.dnsalias.com/osfree/dropzone>

Anonymous read-only CVS: [pserver:osfree@jma.dnsalias.com](mailto:pserver:osfree@jma.dnsalias.com):d:/project Password is "readonly".

-> URL: <http://www.osfree.org>

-> Hobbes: <http://hobbes.nmsu.edu/cgi-bin/h-search?key=/pub/incoming/osfree-snapshot.zip>

-> FTP-Search: <http://download.lycos.com/swadv/AdvResults.asp?query=osfree-snapshot.zip>

---

## December 04

Calculates the mouse input rate in the OS/2 GUI

<http://hobbes.nmsu.edu/pub/incoming/micert10.zip>

<http://hobbes.nmsu.edu/cgi-bin/h-search?key=micert10.zip>

---

## December 03

New BT32.SYS

I've uploaded a new version of BT32.SYS/LXAPI32.SYS and it's applications to [http://www.nord-com.net/s.milcke/bttv\\_en.htm](http://www.nord-com.net/s.milcke/bttv_en.htm)

BT32.SYS is a driver for BT8x8 based TV cards. It was ported from the linux bttv driver.

With the sample application in this package you can

- View TV
  - View Teletext
  - Hear Radio
- 

## December 03

Sarg - Squid Analysis Report Generator

Sarg - Squid Analysis Report Generator is a tool that allow you to view "where" your users are going to on the Internet. Sarg generate reports in html, with fields like: users, IP Addresses, bytes, sites and times.

[http://hobbes.nmsu.edu/pub/incoming/sarg\\_1\\_2\\_2.zip](http://hobbes.nmsu.edu/pub/incoming/sarg_1_2_2.zip)

[http://hobbes.nmsu.edu/cgi-bin/h-search?key=sarg\\_1\\_2\\_2.zip](http://hobbes.nmsu.edu/cgi-bin/h-search?key=sarg_1_2_2.zip)

---

## December 03

CBIRC - Java IRC Client

I'm glad to announce a public preview version of my Internet Relay Chat (IRC) Client CBIRC.

Some of the features are:

- +Single document interface (SDI)
- +Complete RFC 1459 compatible
- +Ident support
- +Displays mIRC styles and colors
- +Displays ANSI colors
- +Displays CTCP/2 styles and colors
- +URL's are highlighted
- +Intrinsic web browser
- +Flood protection
- +DCC chat, send, get
- +Transfer window with transfer statistics
- +CTCP version, userinfo, clientinfo, action, finger, source and time
- +Automatic reconnect and rejoin channels

CBIRC is written in Java. I recommend to use IBM's Java 1.3.1 with WebStart support.

You can download CBIRC at:

<http://www.bratschi.net/cbirc/>

---

## December 03

Mozilla 1.2.1

Mozilla 1.2.1 is out. This is our latest stable release and users of all previous versions are encouraged to upgrade to this release for features, as well as performance, stability, and security fixes. It contains the fix for the DHTML bug that prompted us to pull Mozilla 1.2. See the release notes for more info.

Program URL: <http://www.mozilla.org>

<http://ftp.mozilla.org/pub/mozilla/releases/mozilla1.2.1/mozilla-os2-1.2.1-installer.exe>



---

## December 02

LaBella homepage

Hi

LaBella now has a ( preliminary ) homepage, where you can get some information on whats comming !

<http://www.os2world.com/labella>

Kim Foder

---

## December 01

Name competition winner announced

Hi

Some time ago I started a naming competition for my new program.

And the winner is :

Michael Baryshnikov

Michael suggested 'LaBelle', and I have decided to call my program for 'LaBella', but as the idea came from Michael, It is only fair that he gets the price of a registered version of either C-Side or LaBella after his choice.

Thanks for the large amount of names I have recieved over the last three wee

LaBella will be released shortly, stay tuned for more info.

Kim Foder

E-Mail :

[kimfoder@inet.uni2.dk](mailto:kimfoder@inet.uni2.dk)

[kim@foder.dk](mailto:kim@foder.dk)

[kif@crosswinds.net](mailto:kif@crosswinds.net)

Homepage :

<http://www.inet.uni2.dk/~kimfoder>

---

## December 01

Ghostscript v8.00 released

Haven't seen it mentioned somewhere but ...

Artifex Software Inc. and artofcode LLC are pleased to announce the release of Ghostscript 8.00, the most comprehensive software solution for page description languages. Ghostscript is a leader in PDF, PostScript, and PCL technologies. Ghostscript 8.00 features the following new capabilities:

DeviceN color

With the 8.00 release, Ghostscript now offers true DeviceN color space support, natively rendering spot colors, multicolor images, and gradient effects up to 8 color planes. DeviceN also affords direct and precise control over ink balances in large format inkjet devices. Ghostscript currently powers inkjet RIPs from Best Color GmbH, Xerox XES (in partnership with Caldera Graphics), MacDermid/ColorSpan, and Mutoh America.

Spot color

Ghostscript 8.00 fully supports spot colors and Separation color spaces. This functionality is actually a subset of DeviceN color spaces, and has a high performance implementation.

Overprint

Ghostscript 8.00 also brings native rendering of overprint and overprint mode, as specified in PDF 1.3, and PostScript LanguageLevel 3. Thus, Ghostscript's power and efficiency is now brought to new domains, including packaging, high end prepress, and others.

Well Tempered Screening

Integration of "Well Tempered Screening", an imagesetter-optimized screening technology from artofcode LLC. WTS produces exact irrational angles, as opposed to the rational supercell approximation common in most competitive RIPs. Dots are

exceptionally smooth, even at relatively high rulings and low resolutions. Screener-induced (internal) moire is virtually eliminated. In addition, the WTS integration provides significantly higher throughput when rendering precise color angles than previous Ghostscript releases.

DiskN

Ghostscript now implements DiskN file resources within PostScript, significantly improving the integration with font downloading utilities.

Ghostscript 8.00 can be downloaded from [mirror.cs.wisc.edu](http://mirror.cs.wisc.edu) and [sourceforge.net](http://sourceforge.net).

Please see Obtaining AFPL Ghostscript 8.00 for more details.

Direct download:

[ftp://mirror.cs.wisc.edu/pub/mirrors/ghost/AFPL/gs800/gs800os2.zip](http://mirror.cs.wisc.edu/pub/mirrors/ghost/AFPL/gs800/gs800os2.zip)

---

## December 01

UpdCD fix 2.25 has been released

Changes:

- new: added resource file integration (warp 3, wseb, cp)
- new: support for mpts and tcp/ip 4.3 fixpaks (cp, warp 4, wseb)
- new: flash plug-in installation uses CID procedure now (all)
- new: added tools (73\_TOOLS) add-on to install zip, arj, etc. (all)
- new: aligned with cp fixpak 3 (ecs)
- new: added support for dd fpk 3 (ecs)
- new: aligned with latest ecs update files (ecs)
- fix: i2oxport.sys should not be added double to the config.sys (all)
- fix: fixed problem with tcp/ip 4.3 fixpak install (warp 4)

<http://xenia.sote.hu/~kadzsol/rexx/sajat/updcd.htm>

---

## December 01

ePDF v1.0 for OS/2 and eCs

ePDF (formerly known as PS2PDF) is a PM tool for PostScript to PDF conversion, which uses GhostScript as back-end. With ePDF you are able to create PDF files with user definable document informations from any application which supports printing.

more information and downloads:

<http://www.subsys.de/epdf/>

---

# VOICE Newsletter - VOICE News Continued Page 3.

## News Page 3

### December 13

LICQ 1.2.0a for OS/2

Pre-release of LICQ for OS/2 is available for download from Netlabs ([ftp://ftp.netlabs.org](http://ftp.netlabs.org)) Incoming dir and later LICQ dir in pub. LICQ/2 is the first complete V8 compatible ICQ for OS/2 with all features like Multy-chat, file transfer, etc.. LICQ/2 also is the first app to fully use XFree86/2 4.x potential like fast bitmap rendering, anti-aliased fonts, unicode support, etc.

You will need latest XFree86/2 4.x to test this application. X can be also found at Netlabs.

Feedback is appreciated.

---

## December 13

OS/2 Java Corner updated

Visit OS/2 Java Corner at:

<http://home.hccnet.nl/rjj.troost/japp4os2.htm>

It now contains 110 Java applications (and some applets), each with a short description and its url, and sorted in the categories:

- Communication
- Development
- Games
- Graphic and image
- Multimedia
- Scientific
- Various

All applications have been reported to run well with IBM Java 1.1.8, 1.3.0 or 1.3.1 for OS/2 and eComStation.

New!

- section 'Java resources and software sites'
- due to many requests: required minimum Java version

Please feel free to send me your additions, corrections or other comments!

---

## December 13

CDS News Flash - December 2002

Happy holidays! Time is running out on our end of year rebates. Purchase ANY CDS software product by the end of December and get a 15% rebate!

**\*\* Backup and Recovery Specials \*\***

Now is the time to backup your system and save 15% with rebate! CDS has a version of Back Again II for just about every platform including:

- Windows 9x ~Me
- Windows NT 4.0 Workstation ~Server
- Windows 2000 Professional ~Server
- Windows XP Home ~Professional
- IBM OS/2 Warp, eComStation ~Warp Server

Rebates apply to our just released version 4.0 products and our Remote File System and Microsoft Exchange Agents!

**\*\* Full Featured Voice and Fax Products \*\***

Save 15% on all PrimaFax and PMFax voice ~fax products for Windows, Linux and OS/2!

**\*\* Free Trial Software \*\***

All CDS software products are available for a free download and trial at:

<http://www.cds-inc.com/swreg/eval.html>

For more information on this special end of year discount, please visit <http://www.cds-inc.com>, or email: [bowlby@cds-inc.com](mailto:bowlby@cds-inc.com).

---

## December 12

OS/2 Withdraw Articles

These articles talk about the OS/2 withdraw news and what an IBM spokesman says to them.

<http://www.extremetech.com/article2/0,3973,763064,00.asp>

<http://marketwatch-cnet.com.com/2100-1001-977087.html>

<http://zdnet.com.com/2100-1104-977087.html>

---

## December 12

Updated IBM USB Mass Storage Device Driver

IBM updated the USBSTOR.EXE. The new file is available to registered users in the Device Driver download area of

<http://www.ecomstation.com>

Regards,  
Bob St.John  
Serenity Systems

This turns out to be the same drivers as from last September, but with a slightly modified USBMSD.TXT file.

---

## December 11

RealNetworks releases source code of "Helix DNA Producer"

Found this at de.internet.com, article is in german only... to sum it up: RealNetworks today published the source code of its Helix DNA Producer. This piece of software is the Encoder part for Streaming Media Contents provided to the actual Helix Server. Supported formats are RealAudio and -Video, Ogg Vorbis, Windows Media Format, Quicktime, MPEG-4 and others. The software is available for Windows (of course), Linux and might soon be available for MacOS X as well. ...any volunteers for porting it to OS/2 ?

Url: <http://de.internet.com/index.html?section=Homepage&id=2018150>

---

## December 11

Surveys related to WarpVision and WarpOverlay

eComStation.Ru invites you take part in on-line surveys.

\* Do you need WarpVision as a plugin for Mozilla?

<http://en.ecomstation.ru/poll.php?action=show&id=14>

\* What to add to WarpOverlay! first?

<http://en.ecomstation.ru/poll.php?action=show&id=13>

Developers really wait for your voice. Your advices move mountains. hmm:)

Bonus: short story about "\"Merge an envelope\"" function in Lotus SmartSuite <http://en.ecomstation.ru/showarticle.php?id=80>

---

## December 11

NSC DP83820 Another MAC driver 1.00

<http://hobbes.nmsu.edu/pub/incoming/dp820a00.zip>

<http://hobbes.nmsu.edu/cgi-bin/h-search?key=dp820a00.zip>

---

## December 11

WebMail/2 allows users to read emails via the web.

Web to Email interface for your existing email service. It uses your existing POP3/SMTP to give your users access from the web. Supports OS/2 email servers and any POP3/SMTP service of any platform. Runs under any OS/2 or Linux web server along with an OS/2 management daemon. Supported under OS/2: Weasel, IPS, InetMailPro, InetMail, OS2PopS, ZxMail, and any generic pop3 and smtp server.

Program URL: <http://www.michelinakis.gr/Dimitris/soft.html>

<http://hobbes.nmsu.edu/pub/incoming/webmail13.zip>

<http://hobbes.nmsu.edu/cgi-bin/h-search?key=webmail13.zip>

---

## December 11

Libraries for managing screen displays on character cell terminals

The ncurses (new curses) library is a free software emulation of curses in System V Release 4.0, and more. It uses terminfo format, supports pads and color and multiple highlights and forms characters and function-key mapping, and has all the other SYSV-curses enhancements over BSD curses.

Program URL: <http://invisible-island.net/ncurses>

<http://hobbes.nmsu.edu/pub/incoming/ncurses-5.3-os2.zip>

<http://hobbes.nmsu.edu/cgi-bin/h-search?key=ncurses-5.3-os2.zip>

---

## December 11

TAMARACK(tmi) TC9021 MAC driver 1.03

<http://hobbes.nmsu.edu/pub/incoming/tc902x03.zip>

<http://hobbes.nmsu.edu/cgi-bin/h-search?key=tc902x03.zip>

---

## December 11

NSC DP83815 Another MAC driver 1.00

<http://hobbes.nmsu.edu/pub/incoming/dp815a00.zip>

<http://hobbes.nmsu.edu/cgi-bin/h-search?key=dp815a00.zip>

---

## December 11

Solver - Plot functions, solves equations, and more.

This apparently "orphan" program, incomplete, still is useful. It plots functions, solves equations, finds derivatives and integrates functions I tracked down the author, Gregory Shrago, who permitted me to place his program (now with source!) on Hobbes. Hopefully, someone will continue its development. A portion of the "readme" follows.

\*Function Analyzer AKA Solver\*

Function Analyzer is a small OS/2 program that I wrote for myself when I was a schoolboy. It allows user to plot functions, solve equations, find derivative and integrate functions with specified step. The development platform was IBM VisualAge for C++, version 3.

The program is totally unsupported and development was stopped long ago. Version 1.52 seems to be stable enough. Everyone is granted all the permissions to do anything with this tool and its sources.

[This continues with "some kind of a user guide"... -wdl]

Last updated on: November 18, 2002

(C) Gregory Shrago, [anjin@NOSPAMmail.ru](mailto:anjin@NOSPAMmail.ru)

<http://hobbes.nmsu.edu/pub/incoming/solver152.zip>

<http://hobbes.nmsu.edu/cgi-bin/h-search?key=solver152.zip>

---

## December 11

NewView - Replacement OS/2 help viewer

Rewrite of OS/2 View.exe, reads INF and HLP files. Improvements include a new UI, remember size/position, select and copy from the window... etc This release: Faster, better layout, more options, and many bug fixes.

Program URL: <http://homepages.visp.co.nz/~aaronlawrence/NewView.htm>

[http://hobbes.nmsu.edu/pub/incoming/newview2\\_0\\_25.zip](http://hobbes.nmsu.edu/pub/incoming/newview2_0_25.zip)

[http://hobbes.nmsu.edu/cgi-bin/h-search?key=newview2\\_0\\_25.zip](http://hobbes.nmsu.edu/cgi-bin/h-search?key=newview2_0_25.zip)

---

## December 11

Get Your News

\*NEW\* Version 2.0. An unbelievable, multithreaded, yet simple and powerful newsgroup attachment downloader.

When you absolutely, positively, have to download EVERYTHING. Decryption

for : UUEncoding, Base64, and YES yEnc!

Automatic message merging support from the following programs Direct Read

News 2.96 (Updated v2.0),

Direct Read News 2.97 (Updated v2.0),

Forte Agent 1.92/32.570(Updated v2.0)

Forte Agent 1.91/32.564(Updated v2.0),

Forte Agent 1.9/32.560(Updated v2.0),

Forte Agent 1.8/32.548(Updated v2.0),

Forte Agent 1.7/32.534(Updated v2.0),

Forte Agent 1.7/32.532(Updated v2.0),

Forte Free Agent 1.1 (Updated v2.0),

Forte Free Agent 1.21(Updated V2.0),

Hogwasher/2.6.1(Updated v2.0),  
Hogwasher/3.x (Carbon/OSX) (Updated v2.0),  
Hogwasher/3.0b7 (Carbon/OSX) (Updated v2.0),  
knews 1.0b.1(Updated v2.0),  
MicroPlanet Gravity (Updated v2.0),  
Microsoft Outlook Express 4.0(Updated v2.0),  
Microsoft Outlook Express 5.0(Updated v2.0),  
Microsoft Outlook Express 5.5(Updated v2.0),  
Microsoft Outlook Express 6.0(Updated v2.0),  
MT-NewsWatcher/3.1 (PPC) (Updated v2.0),  
Newspost/2.0 (Updated v2.0),  
News Rover 7.4.3(Updated v2.0),  
NNTP POWER-POST 2000 (Build 25b) (Updated v2.0),  
NNTP POWER-POST 2000 (Build 25) (Updated v2.0),  
NNTP POWER-POST 2000 (Build 24c) (Updated v2.0),  
NNTP POWER-POST 2000 (Build 24) (Updated v2.0),  
NNTP POWER-POST 2000GE(Updated v2.0),  
NNTP YENC-POST 2002 v1.02(Updated v2.0),  
Ozum(Updated v2.0),  
Peck's Power Post(Updated v2.0),  
POWERPOST 2K jw Edition b(Updated v2.0),  
smr-usenet power-post(Updated v2.0),  
Tech Logic(Updated v2.0),  
Thoth/1.5.1 (Carbon/OS X) (Updated v2.0),  
Thoth/1.5.2 (Carbon/OS X) (Updated v2.0),  
Thoth/1.5.4 (Carbon/OS X) (New v2.0),  
Thoth/1.5.5 (Carbon/OS X) (New v2.0),  
Xnews/5.03.24 (Updated v2.0),  
Xnews/L5 (Updated v2.0),  
YA-NewsWatcher/4.2.6(Updated v2.0)

<http://hobbes.nmsu.edu/pub/incoming/getyournews.zip>  
<http://hobbes.nmsu.edu/cgi-bin/h-search?key=getyournews.zip>

---

## December 10

Software Withdrawal: Selected Part Numbers of OS/2 Warp V4 and Warp Server for e-business Programs

-----  
Withdrawals  
-----

\_ 902274 Software Withdrawal: Selected Part Numbers of OS/2 Warp V4 and Warp Server for e-business Programs (20.3KB)  
[http://isource.ibm.com/cgi-bin/goto?it=usa\\_annred&on=902-274](http://isource.ibm.com/cgi-bin/goto?it=usa_annred&on=902-274)

Submit your Questions, Suggestions or Feedback online go to: <http://isource.ibm.com/world/feedback.shtml> or send a note to: [comments@isource.ibm.com](mailto:comments@isource.ibm.com)

To give the gift of information to your colleagues, click here and Recommend to a friend  
[http://isource.ibm.com/cgi-bin/goto?on=recommend\\_isource](http://isource.ibm.com/cgi-bin/goto?on=recommend_isource)

To search for other IBM Announcements by date, title, Announcement letter number, part number, or other search words, go to:  
<http://www.ibmmlink.ibm.com/usalets&parms=D>

Please note that the products described and contact addresses mentioned in the attachment apply in the U.S. only, and may not be applicable in other countries. Readers in other countries should contact IBM locally for details.

Thank you for subscribing.

"Effective March 12, 2003, IBM will withdraw from marketing the part numbers licensed under the IBM International Program License Agreement (IPLA) listed in the Program Withdrawals section.

On or after that date, you can no longer obtain these part numbers directly from IBM. You can obtain these part numbers on an as-available basis through IBM authorized remarketers.

Replacement Product Information: None  
Program Withdrawals

Program	Feature	Part	Program			
Name		Number		Number		Number
OS/2 Warp(R) 4 CD w/doc				5801-AAR	1358	84H1426
OS/2(R) WSeB 1 inst				5801-AAR	5753	31L1707 OS/2
Warp 4 IPLA use 1-pack			5802-AAR	1338		84H1427 OS/2 WSeB
IPLA use 1-pack		5802-AAR	2963		41L0419	OS/2 Warp 4
IPLA use 5-pack		5802-AAR	1800		84H4489	OS/2 Warp 4 IPLA
use 10-pack		5802-AAR	1801		84H4490	OS/2 Warp 4 IPLA use
50-pack	5802-AAR	1802		84H4491	OS/2 Warp 4 IPLA w/o cert	
5802-AAR	1338					84H1428
OS/2 WSeB IPLA use 1-pack				5802-AAR	2963	41L0419 OS/2
WSeB IPLA 1 Client access			5802-AAR	1360		41L0422 OS/2 Warp
4 Upgrade		5803-AAR	0657		84H1429	OS/2 WSeB
Upgrade Security		5803-AAR	2770		31L1716	OS/2 WSeB
Upgrade HPFS 386		5803-AAR	2792		31L1719	OS/2 WSeB
Upgrade OS/2 Srvr		5803-AAR	2648		31L1710	OS/2 WSeB
Upgrade Compet Srvr		5803-AAR	2740		31L1713	OS/2 Warp 4
Upgrade use pack		5804-AAR	0587		84H1430	OS/2 Warp 4
Upgrade use pack		5804-AAR	0868		84H4492	OS/2 Warp 4
Upgrade use pack		5804-AAR	0869		84H4493	OS/2 Warp 4
Upgrade use pack		5804-AAR	0870		84H4494	OS/2 Warp 4
Upgrade use pack		5804-AAR	0588		84H1431	OS/2 Warp 4
Upgrade use pack		5804-AAR	0871		84H4495	OS/2 Warp 4
Upgrade use pack		5804-AAR	0872		84H4496	OS/2 Warp 4
Upgrade use pack		5804-AAR	0873		84H4497	OS/2 Warp 4
Upgrade use pack		5804-AAR	0874		84H4498	OS/2 Warp 4
Upgrade use pack		5804-AAR	0875		84H4499	OS/2 Warp 4
Upgrade use pack		5804-AAR	0876		84H4500	OS/2 Warp 4
Upgrade use pack		5804-AAR	0877		84H4501	OS/2 Warp 4
Upgrade use pack		5804-AAR	0878		84H4502	OS/2 Warp 4
Upgrade use pack		5804-AAR	0879		84H4503	OS/2 Warp 4
Upgrade use pack		5804-AAR	0880		84H4504	OS/2 Warp 4
Upgrade use pack		5804-AAR	0881		84H4505	OS/2 WSeB
Upgrade HPFS use pack		5804-AAR	1183		41L0418	OS/2 WSeB
Upgrade use pack		5804-AAR	1181		41L0420	OS/2 WSeB
Upgrade use pack		5804-AAR	1182		41L0421	OS/2 Warp 4
Doc Pack		5806-AAR	0051		84H1793	OS/2 WSeB Client

use pack	5807-AAR	1360	41L0422 OS/2 WSeB Upgrade
Client use pack	5808-AAR	0616	41L0423
OS/2 Warp 4 Arabic		5639-A29	2954 65H0747 OS/2
Warp 4 Bul		5639-A29	2774 65H0755 OS/2 Warp
4 Cat		5639-A29	2997 65H0756 OS/2 Warp 4 Cz
5639-A29	2975	65H0752	
OS/2 Warp 4 Dan		5639-A29	2926 65H0742 OS/2
Warp 4 Dut		5639-A29	2923 65H0744 OS/2 Warp
4 Fin		5639-A29	2925 65H0744 OS/2 Warp 4 Fr
5639-A29	2928	65H0735	
OS/2 Warp 4 Ger		5639-A29	2929 65H0737 OS/2
Warp 4 Greek		5639-A29	2957 65H0749 OS/2 Warp
4 Heb		5639-A29	2961 65H0748 OS/2 Warp 4
Hungarian		5639-A29	2976 65H0750 OS/2 Warp 4 It
5639-A29	2932	65H0738	
OS/2 Warp 4 Nor		5639-A29	2933 65H0740 OS/2
Warp 4 Pol		5639-A29	2978 65H0751 OS/2 Warp
4 Port		5639-A29	2922 65H0745 OS/2 Warp 4
Rus		5639-A29	2979 65H0746 OS/2 Warp 4 Slov
5639-A29	2911	65H0757	
OS/2 Warp 4 Sp		5639-A29	2931 65H0739 OS/2
Warp 4 Swed		5639-A29	2937 65H0741 OS/2 Warp
4 Tur		5639-A29	2956 65H0753 OS/2 Warp 4 UK
Eng		5639-A29	2927 65H0733 OS/2 Warp 4 US Eng
5639-A29	2924	65H1031	
OS/2 Warp 4 GK Eng		5639-A29	2908 14J1759 OS/2
Warp 4 IPLA use pack		5639-A29	5071 65H1033 OS/2 Warp
4 IPLA use pack		5639-A29	5072 65H0794 OS/2 Warp 4
IPLA use pack		5639-A29	5073 65H0795 OS/2 Warp 4 IPLA
use pack		5639-A29	5074 65H0796
Program	Feature	Part	Program
Name		Number	Number Number
OS/2 Warp 4 Arabic Doc		5639-A29	2954 65H1151 OS/2
Warp 4 Cat Doc		5639-A29	2997 65H1158 OS/2 Warp
4 Cz Doc		5639-A29	2975 65H1155 OS/2 Warp 4
Dan Doc		5639-A29	2926 65H0790 OS/2 Warp 4 Dut
Doc		5639-A29	2923 65H0789 OS/2 Warp 4 Fin Doc
5639-A29	2925	65H0791	
OS/2 Warp 4 Fr Doc		5639-A29	2928 65H0783 OS/2
Warp 4 Ger Doc		5639-A29	2929 65H0784 OS/2 Warp
4 Greek Doc		5639-A29	2957 65H1152 OS/2 Warp 4
Hungarian Doc		5639-A29	2976 65H1153 OS/2 Warp 4 It
Doc		5639-A29	2932 65H0785 OS/2 Warp 4 Nor Doc
5639-A29	2933	65H0787	



OS/2 Warp 4 Pol Doc	5639-A29	2978	65H1154 OS/2
Warp 4 Port Doc	5639-A29	2922	65H0792 OS/2 Warp
4 Rus Doc	5639-A29	2979	65H0793 OS/2 Warp 4 Sp
Doc	5639-A29	2931	65H0786 OS/2 Warp 4 Swed
Doc	5639-A29	2937	65H0788 OS/2 Warp 4 Tur Doc
5639-A29	2956	65H1156	
OS/2 Warp 4 UK Eng Doc	5639-A29	2924	84H1793 OS/2
Warp 4 US Eng Doc	5639-A29	2927	84H1793 OS/2 Warp
4 GK Eng Doc	5639-A29	2908	14J1757
OS/2 Warp 4 Arabic Upgrade	5639-A29	2954	65H0772 OS/2
Warp 4 Bul Upgrade	5639-A29	2974	65H0780 OS/2 Warp
4 Cat Upgrade	5639-A29	2997	65H0781 OS/2 Warp 4 Cz
Upgrade	5639-A29	2975	65H0777 OS/2 Warp 4 Dan
Upgrade	5639-A29	2926	65H0768 OS/2 Warp 4 Dut
Upgrade	5639-A29	2923	65H0767 OS/2 Warp 4 Fin
Upgrade	5639-A29	2925	65H0769 OS/2 Warp 4 Fr
Upgrade	5639-A29	2928	65H0760 OS/2 Warp 4 Ger
Upgrade	5639-A29	2929	65H0762 OS/2 Warp 4 Greek
Upgrade	5639-A29	2957	65H0774 OS/2 Warp 4 Heb
Upgrade	5639-A29	2961	65H0773 OS/2 Warp 4
Hungarian Upgrade	5639-A29	2976	65H0775 OS/2 Warp 4 It
Upgrade	5639-A29	2932	65H0763 OS/2 Warp 4 Nor
Upgrade	5639-A29	2933	65H0765 OS/2 Warp 4 Pol
Upgrade	5639-A29	2978	65H0776 OS/2 Warp 4 Port
Upgrade	5639-A29	2922	65H0770 OS/2 Warp 4 Rus
Upgrade	5639-A29	2979	65H0771 OS/2 Warp 4 Slov
Upgrade	5639-A29	2911	65H0782 OS/2 Warp 4 Sp
Upgrade	5639-A29	2931	65H0764 OS/2 Warp 4 Swed
Upgrade	5639-A29	2937	65H0766 OS/2 Warp 4 Tur
Upgrade	5639-A29	2956	65H0778 OS/2 Warp 4 UK Eng
Upgrade	5639-A29	2927	65H0758 OS/2 Warp 4 US Eng
Upgrade	5639-A29	2924	65H0758 OS/2 Warp 4 GK Eng
Upgrade	5639-A29	2908	14J1750
OS/2 Warp 4 IPLA use pack Upgrade	5639-A29	5071	65H1035 OS/2
Warp 4 IPLA use pack Upgrade	5639-A29	5071	65H1036 OS/2 Warp
4 IPLA use pack Upgrade	5639-A29	5071	65H1161 OS/2 Warp 4
IPLA use pack Upgrade	5639-A29	5071	65H1165 OS/2 Warp 4 IPLA
use pack Upgrade	5639-A29	5071	65H1143 OS/2 Warp 4 IPLA use
pack Upgrade	5639-A29	5071	65H1147
OS/2 Warp 4 IPLA use pack Upgrade	5639-A29	5072	65H0797 OS/2
Warp 4 IPLA use pack Upgrade	5639-A29	5072	65H0800 OS/2 Warp
4 IPLA use pack Upgrade	5639-A29	5072	65H1162 OS/2 Warp 4
IPLA use pack Upgrade	5639-A29	5072	65H1166 OS/2 Warp 4 IPLA
use pack Upgrade	5639-A29	5072	65H1144 OS/2 Warp 4 IPLA use

pack Upgrade	5639-A29	5072	65H1148	
OS/2 Warp 4 IPLA use pack Upgrade	5639-A29	5073	65H0798	OS/2
Warp 4 IPLA use pack Upgrade	5639-A29	5073	65H0801	OS/2 Warp
4 IPLA use pack Upgrade	5639-A29	5073	65H1163	OS/2 Warp 4
IPLA use pack Upgrade	5639-A29	5073	65H1081	OS/2 Warp 4 IPLA
use pack Upgrade	5639-A29	5073	65H1145	OS/2 Warp 4 IPLA use
pack Upgrade	5639-A29	5073	65H1149	
OS/2 Warp 4 IPLA use pack Upgrade	5639-A29	5074	65H0799	OS/2
Warp 4 IPLA use pack Upgrade	5639-A29	5074	65H0802	OS/2 Warp
4 IPLA use pack Upgrade	5639-A29	5074	65H1164	
Program	Feature	Part	Program	
Name		Number	Number	Number
OS/2 Warp 4 IPLA use pack Upgrade		5639-A29	5074	65H1082 OS/2
Warp 4 IPLA use pack Upgrade		5639-A29	5074	65H1146 OS/2 Warp
4 IPLA use pack Upgrade		5639-A29	5074	65H1150
OS/2 Warp 4 SW Choice 1 installation			8528	4070489 OS/2
Warp 4 SW Choice 5 installations			5184	4071103 OS/2 Warp
4 SW Choice 10 installations			5185	4071104 OS/2 Warp 4 SW
Choice 50 installations		5186	4071105	Program Package --
Brazilian Portuguese		5895	55H3900	Program Package --
English		2924	55H3875	Program Package --
Spanish		2931	55H3880	Program Package --
Arabic		2954	55H3887	Program Package --
Bulgarian		2974	55H3901	Program Package --
Catalan		2997	55H3903	Program Package --
Czech		2975	55H3892	Program Package --
Danish		2926	55H3884	Program Package --
Dutch		2923	55H3883	Program Package --
English		2924	55H3875	Program Package --
Finnish		2925	55H3885	Program Package --
French		2928	55H3877	Program Package --
German		2929	55H3878	Program Package --
Greek		2957	55H3889	Program Package --
Hebrew		2961	55H3888	Program Package --
Hungarian		2976	55H3890	Program Package --
Italian		2932	55H3879	Program Package --
Norwegian		2933	55H3881	Program Package --
Portuguese		2922	55H3898	Program Package --
Russian		2979	55H3886	Program Package --
Slovenian		2911	55H3902	Program Package --
Spanish		2931	55H3880	Program Package --
Swedish		2937	55H3882	Program Package --
Polish		2978	55H3891	Program Package --
Turkish		2956	55H3893	

Program Package -- Canadian English	8617	4070489	
Program Package -- Canadian French	8618	55H3877	
Program Package -- Japanese	8627	4071100	
Program Package -- Korean	8628	55H3894	
Program Package -- Simplified Chinese	8629	55H3895	
Program Package -- Thai	8630	55H3897	
Program Package -- Traditional Chinese	8631	55H3896	
Program Package -- US English (AP)	8528	14J1800 OS/2	
WSeB 1 inst Danish	5639-F93	0709065 OS/2 WSeB	
1 inst Dutch	5639-F93	0709069 OS/2 WSeB 1	
inst Finnish	5639-F93	0709077 OS/2 WSeB 1 inst	
French	5639-F93	0709079 OS/2 WSeB 1 inst	
German	5639-F93	0709081 OS/2 WSeB 1 inst	
Italian	5639-F93	0709083 OS/2 WSeB 1 inst	
Norwegian	5639-F93	0709084 OS/2 WSeB 1 inst	
Spanish	5639-F93	31L1709 OS/2 WSeB 1 inst	
Swedish	5639-F93	0709085 OS/2 WSeB 1 inst	
Japanese		42L0976 OS/2 WSeB 1 inst	
SChinese		42L0974 OS/2 WSeB 1 inst	
TChinese		42L0975 OS/2 WSeB Upg. 386	
HPFS Eng	5803-AAR 2792	31L1719 OS/2 WSeB Upg. 386 HPFS	
Danish		0705754 OS/2 WSeB Upg. 386 HPFS	
Dutch		0705755 OS/2 WSeB Upg. 386 HPFS	
Finnish		0705756 OS/2 WSeB Upg. 386 HPFS	
French		0705757 OS/2 WSeB Upg. 386 HPFS	
German		0705758 OS/2 WSeB Upg. 386 HPFS	
Italian		0705759 OS/2 WSeB Upg. 386 HPFS	
Norwegian		0705760 OS/2 WSeB Upg. 386 HPFS	
Swedish		0705761 OS/2 WSeB Upg. 386 HPFS	
Spanish		31L1721 OS/2 WSeB Upg. 386 HPFS	
Japanese		42L0985 OS/2 WSeB Upg. 386 HPFS	
SChinese		42L0983 OS/2 WSeB Upg. 386 HPFS	
TChinese		42L0984 OS/2 WSeB Upg. English	
5803-AAR 2648	31L1710		
OS/2 WSeB Upg. Danish		0709087 OS/2	
WSeB Upg. Dutch		0709105 OS/2 WSeB	
Upg. Finnish		0709086	
Program Feature Part Program			
Name	Number	Number	Number
OS/2 WSeB Upg. French		0709088 OS/2	
WSeB Upg. German		0709089 OS/2 WSeB	
Upg. Italian		0709106 OS/2 WSeB Upg.	
Norwegian		0709107 OS/2 WSeB Upg.	
Swedish		0709108 OS/2 WSeB Upg.	

Spanish			31L1712 OS/2 WSeB Upg. CSrv
English	5803-AAR	2740	31L1713 OS/2 WSeB Upg. CSrv
Danish			0709109 OS/2 WSeB Upg. CSrv
Dutch			0709111 OS/2 WSeB Upg. CSrv
Finnish			0709110 OS/2 WSeB Upg. CSrv
French			0709082 OS/2 WSeB Upg. CSrv
German			0709080 OS/2 WSeB Upg. CSrv
Italian			0709078 OS/2 WSeB Upg. CSrv
Norwegian			0709076 OS/2 WSeB Upg. CSrv
Swedish			0709075 OS/2 WSeB Upg. CSrv
Spanish			31L1712 OS/2 Warp 4 Dan
5639-A29	2926	65H0743	
OS/2 Warp 4 Dut			5639-A29 2923 65H0742 OS/2
Warp 4 Japanese			5639-A29 55H3803 OS/2 Warp
4 Korean		5639-A29	55H3814 OS/2 Warp 4
CHS		5639-A29	55H3825 OS/2 Warp 4 CHT
5639-A29		55H3836	
OS/2 Warp 4 THA			5639-A29 55H3847 OS/2
Warp 4 US Eng Upgrade		5639-A29 2924	65H1032 OS/2 Warp
4 SW Choice Program Package		8528	4070489 OS/2 Warp 4 SW
Choice 1 installation		5183	4071102 OS/2 WSeB PP 1
inst/1 usr BP			31L1708 OS/2 WSeB PP 1
inst/1 usr svr Upg BP			31L1711 OS/2 WSeB PP 1
inst/1 usr svr Upg SC			42L0977 OS/2 WSeB PP 1
inst/1 usr svr Upg TC			42L0978 OS/2 WSeB PP 1
inst/1 usr svr Upg JA			42L0979 OS/2 WSeB PP 1
inst/1 usr comp svr Upg BP			31L1714 OS/2 WSeB PP 1
inst/1 usr comp svr Upg ES			31L1715 OS/2 WSeB PP 1
inst/1 usr comp svr Upg SC			42L0980 OS/2 WSeB PP 1
inst/1 usr comp svr Upg TC			42L0981 OS/2 WSeB PP 1
inst/1 usr comp svr Upg JA			42L0982 OS/2 WSeB Security
Pkg BP			31L1717 OS/2 WSeB Security Pkg
DA			0709074 OS/2 WSeB Security Pkg NL
0709073			
OS/2 WSeB Security Pkg FI			0709072 OS/2
WSeB Security Pkg FR			0709071 OS/2 WSeB
Security Pkg DE			0709070 OS/2 WSeB
Security Pkg IT			0709068 OS/2 WSeB
Security Pkg NO			0709067 OS/2 WSeB
Security Pkg ES			31L1718 OS/2 WSeB
Security Pkg SV			0709066 OS/2 WSeB
Security Pkg SC			42L1072 OS/2 WSeB
Security Pkg TC			41L1073 OS/2 WSeB
Security Pkg JA			42L1074 OS/2 WSeB HPFS

Upg from WS4 BP	31L1720 OS/2 WSeB HPFS Upg
BP	41L0425 OS/2 WSeB HPFS Upg DA
0709144	
OS/2 WSeB HPFS Upg NL	0709145 OS/2
WSeB HPFS Upg FI	0709146 OS/2 WSeB
HPFS Upg FR	0709147 OS/2 WSeB HPFS
Upg DE	0709148 OS/2 WSeB HPFS Upg
IT	0709149 OS/2 WSeB HPFS Upg NO
0709177	
OS/2 WSeB HPFS Upg ES	41L0426 OS/2
WSeB HPFS Upg SV	0709178 OS/2 WSeB
HPFS Upg SC	42L1219 OS/2 WSeB HPFS
Upg TC	42L1220 OS/2 WSeB HPFS Upg
JA	42L1221

#### Reference Information

Program Services remain available until December 31, 2004.

Refer to the SLA Web site for information on the Program Services end date:

<http://www.ibm.com/software/sla>

#### Trademarks

OS/2 Warp and OS/2 are registered trademarks of International Business Machines Corporation in the United States or other countries or both. Other company, product, and service names may be trademarks or service marks of others."

---

#### December 09

SetregPM ver. 0.91

Hi out there,

this might be of concern only to users of VIA 686 sound chips who are requiring Vit Timchishins "SETREG.EXE" from the VIASP09C.ZIP package to control mixer settings...

I just uploaded my first public "beta" version of setregpm to hobbes. It's just a simple frontend intended to ease the use of SETREG.EXE. This is \*really crude BETA stuff\* and as I didn't test it too much, you're invited to check it out and tell me if/how it works for you.

current URL is

<http://hobbes.nmsu.edu/pub/incoming/setregpm091.zip>

and might turn out to become

<http://hobbes.nmsu.edu/pub/os2/apps/mmedia/util/setregpm091.zip>

Have fun!

Greetings

Thomas

---

#### December 09

Security/2 alpha version

The new free Security/2 package from Openssh porters adds user-based access control to OS/2.

<http://www.ecomstation.ru/openssh/>

---

#### December 08

OS/2 Engineer Analyst

US-CA-San Diego-OS/2 Software Engineer

Responsible for the enhancement and maintenance of software applications written primarily under OS/2. The job includes implementation of enhancements per specification, maintenance and upgrades, integration and testing. Target platforms will be PC processor based systems utilizing OS/2 Software will be written in C.

Essential Skills:

- \* Solid experience with C programming in an OS/2 environment.
- \* Working knowledge of development or configuration of OS/2 device drivers.
- \* Experience with serial communication protocols under OS/2.

Close liaison with engineering teams with OS/2 applications will also be required. Candidates shall have a graduate degree or equivalent in Electronics or Computer Sciences (or related), 3+ years recent experience with developing applications under OS/2 using C, good verbal and written communications skills, excellent problem solving and debugging skills. Knowledge of embedded systems in particular 68K will be a plus as the OS/2 applications interface to 68K based equipment.

Minimum Requirements:

Graduate degree or equivalent in Electronics or Computer Science (or related), 3+ years experience with OS/2 applications and communications drivers. Must have worked extensively with OS/2 applications in the last six months.

PLEASE ONLY LOCAL QUALIFIED CANDIDATES AUTHORIZED TO WORK IN THE US.

Job Title: OS/2 Software Engineer

Primary Skills: OS/2; C; Device Drivers

Job Industry: Software

Vacancies: 1

Job City: San Diego

Job Metro Area: San Diego

Job State: CA

Job Country: US

Salary: \$ 40.00/HOURLY to \$65.00/HOURLY

Hours per Week: 40

Start Date: ASAP

Job Duration: 3 - 6 months

Detailed Job Duration: Contract

Degree Type: BS

Degree Area: Electronics or Computer Sciences

Experience Minimum: 3 Years

Examine Your Career Options! With over 250 worldwide offices, Manpower Professional gives you an excellent opportunity to choose your career path and customize your work experience. To help you meet your career goals, we offer a wide range of free IT and business training online through our Global Learning Center. We provide other exceptional benefits to our employees including medical and life insurance, holiday and vacation pay, 401K, and a stock purchase plan (in most locations). Servicing over 95% of the Fortune 500 companies enables us to offer you a full range of placement options including contract, direct and contract-to-hire.

To submit a resume for this position, you must place PR92123/MB/14711RYB in the subject line of your e-mail. Send your resumes to: [jobs@technical.manpower.com](mailto:jobs@technical.manpower.com) text format. Do not send e-mail attachments. Additional Information Salary: to 65.00 per hour Position Type: Full Time, Temporary/Contract/Project Ref Code: PR92123/MB/14711RYB Contact Information Manpower Professional Recruiter

---

## VOICE Newsletter - VOICE News Continued Page 4.

### News Page 4

#### December 21

SciTech SNAP Graphics for OS/2 2.1.1 RC1

SciTech SNAP Graphics for OS/2 2.1.1 RC1 has been released:

<ftp://ftp.scitechsoft.com/snap/os2/beta/>

You can view the readme file here:

<ftp://ftp.scitechsoft.com/snap/os2/beta/readme.txt>

For a list of changes, see the changelog:

[http://www.scitechsoft.com/snap2\\_changes.txt](http://www.scitechsoft.com/snap2_changes.txt)

"Changes in 2.1.1 (rc1)

-----

- . Added zoom support on the VBE driver, and made some minor fixes for flat panels.
- . Decreased the retrace delay in the i845 driver to allow certain analog flat panels (Viewsonic) to sync properly. Also added DVI support.
- . Video distortion on some variants of the Rage128 and Rage128 Pro should now be fixed.
- . Video distortion on some G450 cards has been fixed.
- . MultiHead tab would sometimes use uninitialized values for the base resolution; this has been fixed.
- . Screen pages were always showing current refresh rate, even if they should be showing new selection for reboot; fixed."

If you encounter any problems, please open tickets on the SciTech HelpDesk, with your graphics.log and any pertinent screenshots attached: <http://www.scitechsoft.com/support/helpdesk/>

---

## December 21

Updcd 2.30 has been released

It is the latest full replacement of Updcd.

With UpdCD you can incorporate public IBM fixpaks into your installation CD. In this way you will be able to install a Year 2000 compliant OS/2 Warp on systems with large hard disks right from this CD. You do not have to reinstall fixpaks after using selective install. You can boot and install right from the CD. You can incorporate new products into the CD.

-> URL: <http://xenia.sote.hu/~kadzsol/rexx/sajat/updcd.htm>

-> Hobbes: <http://hobbes.nmsu.edu/cgi-bin/h-search?key=updcd230.zip>

---

## December 21

Final Watcom 11.0c binary patch released

The Open Watcom core team has released the final version 11.0c binary patch update targeted at existing Watcom C/C++ and Fortran users. The binary patch update can be used to upgrade version 10.6 and later installations.

<http://www.openwatcom.org/>

---

## December 21

New WarpVision 12/20/2002

Since 12/20/2002 a new version of the videoplayer WarpVision is available. Updated were the commandline version (CLI) and the graphical version (GUI). The ZLIB.DLL is not needed from this version on.

<http://os2.kiev.ua/en/wv.download.php>

---

## December 20

Native OS/2 XML editor and parser

A little Christmas present for the OS/2 community! gX is a native 32-bit OS/2 XML editor and parser. It is available as open beta now in the Hobbes incoming directory in the file gX-0-2.zip. The parser is written from scratch for OS/2, not ported; it can do full validation and SGML compatibility checking. The editor uses document type definitions to provide guidance in authoring correct documents. For example, use it to create HTML 4.0 documents, DocBook books and articles, etc.

URL: <http://hobbes.nmsu.edu/pub/incoming/gX-0-2.zip>

Search: <http://hobbes.nmsu.edu/cgi-bin/h-search?key=gX-0-2.zip>

---

## December 20

NetGamePack v1.0a released

NetGamePack v1.0 alpha release is available for download from <http://os2.rulez.org/netgamepack/>!

NetGamePack is a free, general network based game client, targeted to ease the development of network games for OS/2 and eComStation. Right now, it contains the server, the client, and two sample applications (Chat and BattleShips).

An experimental server should be running even now at [os2.rulez.org:630](http://os2.rulez.org:630).

Full source code is available, feedbacks are welcome!

As BattleShips is skinnable, and the current (development) skin is not a masterpiece (it was not meant to be, anyway), feel free to create new skins, and upload them to [ftp://bships:skins@os2.rulez.org](mailto:bships:skins@os2.rulez.org) ! The best one will be selected to be the default skin of BattleShips! (A skin how-to is available from the main site.)

---

## December 20

### New WarpVision GUI + CLI

Hot from the compiler, WarpVision GUI and CLI  
WarpVision GUI

=====

PLEASE! Remove VIDEO2.INI first!

20.02.2002

\* latest libavcodec

\* fixed 3175 on some wma audio sources

\* sync fixes again :)

\* no more zlib.dll need

16.12.2002

+ added -debug command line switch produce wvgui.log file in current directory

15.12.2002

\* fixed crash on svq1 video (aka QT or MOV)

\* fixed wrong length detection of mp3 audio

<http://www.laemmlin.net/mirror/wvgui/wvgui20021220.zip>

WarpVision CLI

=====

wvision-cli 0.0.14n ( Fri Dec 20 06:12:00 2002 UTC )

- mov files demuxer added + qt specific stuff (experimental!)

wvision-cli 0.0.14n ( Tue Dec 17 11:21:34 2002 UTC )

- latest libavcodec

- sync fix

- dart callback buffers fix (thanks to RElf!)

- WMA noise fix

<http://www.laemmlin.net/mirror/wvcli/wvcli20021220.zip>

---

## December 19

IBM explains the recent withdraw of Warp4/WSeB

<http://www-3.ibm.com/software/os/warp/swchoice/>

On 10 December 2002, IBM United States Announcement Letter 902-274 announced the withdrawal from marketing on both Passport Advantage and Software Choice of selected IBM OS/2 Warp 4 and OS/2 Warp Server for e-business shrinkwrap part numbers. This withdrawal was made possible by the recent removal of the 10 point minimum initial purchase criteria for Passport Advantage subscriptions, enabling single and low volume orders by business partners and individual customers. This announcement also withdraws obsolete OS/2 part numbers for OS/2 Warp 4 for which End Of Service expired on 31 January 2001.

IBM OS/2 Warp 4 and OS/2 Warp Server for e-business with Software Maintenance will continue to be available through Passport Advantage.

New Passport Advantage customers should register online at

[http://www.lotus.com/services/passport.nsf/WebDocs/Passport\\_Advantage\\_Home](http://www.lotus.com/services/passport.nsf/WebDocs/Passport_Advantage_Home) and can use the following table to help select the appropriate OS/2 Warp 4 and/or OS/2 Warp Server for e-business license(s) and product media package(s) that also include the Convenience Package CD ROMs and the Software Choice features CD ROMs.

OS/2 Warp V4:

New OS/2 Warp V4 License. Choose either 1 year or 2 year license plus

Software Maintenance

D5C4JLL OS/2 WARP INSTALL LIC/SW MAINT 1 ANNIV

D5C4KLL OS/2 WARP INSTALL LIC/SW MAINT 2 ANNIV

Current OS/2 Warp V4 License Holder. Select 1 year Software Maintenance after License.

D5C4NLL OS/2 WARP INSTALL SW MAINT AFT LIC 1 ANNIV

OS/2 Warp Server for e-Business:

New OS/2 Warp Server for e-business License. Choose either 1 year or 2 year license plus Software Maintenance for the server and 1 year or 2 year license plus Software Maintenance for each user connected to the server.

D5C4TLL OS/2 WARP SERVER FOR EBUSINESS SVR LIC/SW MAINT 1 ANNIV

D5C4ULL OS/2 WARP SERVER FOR EBUSINESS SVR LIC/SW MAINT 2 ANNIV

D5C52LL OS/2 WARP SERVER FOR EBUSINESS USER LIC/SW MAINT 1 ANNIV

D5C53LL OS/2 WARP SERVER FOR EBUSINESS USER LIC/SW MAINT 2 ANNIV

Current OS/2 Warp V4 License Holder. Select 1 year Software Maintenance after License for the server and for each user connected to the server.



D5C4XLL OS/2 WARP SERVER FOR EBUSINESS SVR SW MAINT AFT LIC 1 ANNIV  
D5C55LL OS/2 WARP SERVER FOR EBUSINESS USER SW MAINT AFT LIC 1 ANNIV

Once you purchase the Software Maintenance either as part of a new license or after license you should also purchase the appropriate media package. You may find the following table useful in selecting the desired language product media package.  
OS/2 Warp V4 OS/2 Warp Server for e-business Passport Advantage Media Package by Language Passport Advantage Media Package by Language Language Part Number Language Part Number  
English 84H6327 English 31L1723  
German BC81HDE German BC6V9DE  
French BC8YKFR French BC6V9FR  
Italian BC8WQIT Italian BC6V9IT  
Spanish BC8GHES Spanish BC6V9ES  
Brazilian Portuguese BC005BP Brazilian Portuguese BC6V9BP  
Japanese 25L9165 Japanese BC6V9JA  
Traditional Chinese BC620TC  
Traditional Chinese BC6V9TC Simplified Chinese BC005SC Simplified Chinese BC6V9SC  
Dutch BC8FANL Dutch BC6V9NL  
Danish BC83GDA Danish BC6V9DA  
Finnish BC8YHFI Finnish BC6V9FI  
Norwegian BC8YPNO Norwegian BC6V9NO  
Swedish BC8YSSV Swedish BC6V9SV

---

## December 19

Scitech press release - Intel video chipset drivers

It seems Scitech will take over supporting Intel video chips on OS/2

[http://www.scitechsoft.com/news/press/intel\\_release.html](http://www.scitechsoft.com/news/press/intel_release.html)

"SciTech Reaches Agreement with Intel on Future OS/2 Graphics Driver Support for Integrated Graphics Chipset Platforms

SciTech Software, Inc. has reached an agreement with Intel(R) Corporation which will allow SciTech to provide future support for Intel Chipsets for enterprise and business customers worldwide running IBM's OS/2 operating system. The agreement effectively transitions all OS/2 graphics driver development, validation, and support for Intel integrated graphics chipsets from Intel to SciTech as of January 1, 2003. As part of the agreement between the two companies, SciTech will make their latest device driver technology, SciTech SNAP Graphics, available for licensing directly to OS/2 customers of Intel's integrated graphics chipsets. SciTech will also offer full support for customers using SciTech SNAP Graphics on Intel integrated graphics platforms running OS/2."

---

## December 18

eBayWatch/2 ver 1.09g revisited

Hello all,

My apologies.

I've uploaded 1.09g1 to -

<http://www.eclipse.net/~knkrchnr>

And the web page is pointing to the right file this time.

This is to fix the corrupted search results page. I have also had a report of an "Unable to Process" error message that I've not been able to reproduce. If you get such a page error please email me the eBay item number so I can try to find what's different.

---

## December 18

PC Magazine and the Register declare OS/2 dead yet again.

"Obituary: OS/2 ", By John Dvorak -

<http://www.pcmag.com/article2/0,4149,768242,00.asp>

"So farewell then, OS/2 - Windowed to death, finally", By John Lettice -

<http://www.theregister.co.uk/content/4/28606.html>

---

## December 18

mozilla maintenance 1.0

mozilla maintenance, a small utility to wipe the urlbar history from localstore.rdf and a .cmd to wipe the cache/cookies/download log/history.dat is available free @ <http://dink.org>

I run this utility once a day to keep mozilla nice and speedy.. I noticed too many entries in the urlbar history causes UI

slowdown...  
best regards,  
- dink

---

## December 18

eBayWatch/2 ver 1.09g

eBayWatch/2 is an auction management tool for OS/2 users. It works solely with the eBay auction site. It is meant to aid the user in searching for, monitoring and bidding on auction items. eBayWatch/2 is copyright freeware.

Required -

- 1) partition with long filename support (hpfs/jfs)
- 2) rexxutil.dll and rxsock.dll in libpath
- 3) must start from its work directory, or a program object which sets the work directory I have uploaded ver 1.09g to - <http://www.eclipse.net/~knkrchn>

There's not a lot new in this drop, but eBay changes make it a must.

From the readme -

- eBay changes broke page retrieval (and probably bidding)

- New: Added search option "Search Seller Auctions"

Use the "search builder" to add a search for a particular seller to your search page. Options will enable/disable according to your selection.

- New: Added context menu item "View Seller Auctions" This will call the standard eBay page to display the auctions of the seller whose item you have hilited

As always, if you find anything strange or broken, please let me know.

Thanks,

Ken

---

## December 16

Warpstock Europe 2002 statistics T-shirt

Now we've read various articles about the Warpstock event in Arnhem, the Netherlands, there's only one final conclusion to draw: the event was successful.

According to the opinion of some guys from Netlabs (e.g. Bart van Leeuwen and Adrian Gschwend), this year's Warpstock Europe gave a tremendous push forward to the open source development of OS/2 software.

Besides that, as a Warpstock Europe visitor you might become curious about some figures of the event. Well, here you go:

- The total amount of visitors was 248
- An average of 163 attendees each day
- Up to 19 nationalities
- Almost 450 lunches have been served
- About 40 attendees stayed overnight at the hostel for 2 or more nights.
- 18 speakers
- About 16 people were involved at the organization
- There were 3 captains on the ship, Bart van Leeuwen, Gerrit Schoenmaker ~Christian Langanke
- Warpstock Europe was sponsored by the huge Dutch computerorganization HCC with 3000 Euro
- 4 commercial exhibitors were present
- The total cost of this Warpstock was as little as 6500 Euro

If you see all this, you should like to have a reminder on Warpstock Europe in the Netherlands. So, the organization team has decided that its possible for you to buy that famous Warpstock T-shirt as yet until the end of january 2003 for the special price of 25 Euro all in. If you want to do so, please send an email with the SHIRT SIZE and your POSTADDRESS to [g.schoenmaker@kader.hobby.nl](mailto:g.schoenmaker@kader.hobby.nl) with the subject entitled: WSE2002 T-shirt. You will get a mail in return with the bankaccount where you can transfer the money to. The shirt will be sent to you as soon as the payment has arrived!

---

## December 16

JANUARY 2003 OS/2 CONNECT NEWSLETTER

PALM HARBOR, FLORIDA (December 16, 2002) - M. Bryce & Associates (MBA) today announced the release of the January issue of OS/2 CONNECT, a freeware newsletter distributed through the various computer networks and bulletin boards.

The newsletter is implemented as a web page at:

<http://www.os2ss.com/connect/>.

Its HTML files are also available for downloading and viewing locally. The file is named CON0103.ZIP. The newsletter includes the following sections:

Title ~Publisher

What's New in this Issue?

Sound Off!

Editorial Page (Proposed "OS/2 Update" Program ~OS/2 Java Corner)

World Reports (Scandinavia)

News ~Press Releases

Graphic of the Month  
Calendar of Events  
Bulletin Boards  
Internet Addresses ~Locations  
Telephone ~Fax Numbers  
Team OS/2  
OS/2 User Groups  
Who's Who of OS/2  
Publications  
- Books  
- Periodicals  
- Videos  
OS/2 Tips, Tricks ~Keys  
Products ~Services

A 1README.TXT file is attached to the .ZIP file explaining how to install and view the newsletter using standard web browsers, such as the Netscape Navigator.

1. On the Internet:

World Wide Web:

OS/2 CONNECT home page (HTML)

<http://www.os2ss.com/connect/>

- the zipped HTML files for downloading can be found at:

<http://www.os2ss.com/connect/purpose.htm>

OS/2 WORLD (Mirror site in Europe)

<http://www.os2world.com/connect/>

Yahoo! OS/2 CONNECT Discussion Group in the "Files" section (for members only):

<http://groups.yahoo.com/group/os2connect/files/con0103.ZIP>

IN AUSTRALIA - SBT Internet Systems Pty. Ltd.

<http://www.sbt.net.au/connect/>

IN BRAZIL

<http://macarlo.com/>

IN DENMARK:

<http://www.lionmail.dk/>

FTP Site: hobbess.nmsu.edu

<http://hobbess.nmsu.edu/pub/os2/info/newsltr/connect>

or (/pub/incoming)

2. Commercial Networks:

America Online

In the OS/2 Forum (Ctrl+K, "os2"), under "OS/2 News Magazines."

NOTE: You can also access our Web site through AOL's "OS/2 on the 'Net" section in the OS/2 Forum; select "OS/2 Publications Websites."

3. Bulletin Boards:

The 42nd Street BBS (Northern Ireland, UK)

+44-(0)1247-270883

IBM OS/2 BBS Slovenia (Ljubljana, Slovenia)

+386-61-1253464

The Lighthouse OS/2 Support BBS/HUGO (Netherlands)

+31-183-402427

Midnight's Hour BBS (Carbondale, IL)

618-529-3176

Me2BBS London (London, UK)

+44-208-442-8560

NightCall (Odense, Denmark)

+45-6312-1074

The OS/2 CONNECT HTML files may be distributed free of charge.

If you have any questions, please do not hesitate to contact:

Tim Bryce

Editor, OS/2 CONNECT

M. Bryce ~Associates (MBA)

a division of M&JB Investment Company (M&JB)

3310 U.S. Alt. 19

P.O. Box 1637

Palm Harbor, FL 34682-1637

United States

Tel: 727/786-4567

Fax: 727/786-4765

E-Mail: [timb001@attglobal.net](mailto:timb001@attglobal.net)

WWW: <http://www.os2ss.com/connect/>

MBA: Developers of the "PRIDE" Information Factory(R) ~Batch Manager

Since 1971: "Software for the finest computer - the Mind"

---

## December 16

Pine 4.51

Hi all.

<http://www.zeta.org.au/~nps/software/pine/en/index.html>

As for Pine 4.50, I've compiled two versions of Pine 4.51. The standard version, available from Hobbes, has had no OS/2-specific changes. The new version, available from my web site, has had a couple of changes.

Most significantly, the mail servers can now be launched from an OS/2-style inetd. I haven't had time to test them thoroughly but they seem to work fine for basic mail reading. In particular, I haven't carefully examined the security of my log-in implementation so you may want to think carefully about how your machine might be exposed if you use the new servers. Please report any bugs or security flaws to me so that I can fix them for the next release.

Nicholas S.

---

#### December 16

Christmas OS/2 eZine is Out

Read it at <http://www.os2ezine.com>

---

#### December 16

New WarpVision GUI 12/13/2002

PLEASE! Remove VIDEO2.INI first!

13.12.2002

! Hi to Freddie :)

+ added status of playlist

\* fixed possible crash in mp3 layer1 streams

\* other fixes

Program URL: <http://os2.kiev.ua/>

<http://www.laemmlin.net/mirror/wvgui/wvgui20021213.zip>

---

#### December 16

Program Editor V2.30 for OS/2

Program Editor for OS/2 is a full-featured, general-purpose, PM-based text editor capable of handling any number of different editing tasks. The editor is programmable, remote controllable from another application (such as your own), and capable of running any OS/2 command line compatible program (such as a compiler). It has many features including unlimited undo, redo, file template support, file access sharing controls for group working, etc.

You can download Program Editor from

<http://www.manglais.com/download/MAPE230.ZIP>

(the url is case sensitive)

Enjoy!

---

#### December 15

Mozilla 1.3a is up

1.3a is up

<http://www.mozilla.org/releases/>

Enjoy!

Mike

## December 26

Assembler for AVR-microcontrollers

This is freeware (released under GPL) macroassembler for AVR-series of microcontrollers. English version. Compiles code written for Atmels AVR DOS assembler Generates Intel Hex, Motorola S-record, Generic and binary output. Atmel object files compatible with Atmel's AVR Studio. More than 100 warning/error messages. Supports macros and macros in macros.

Program URL: <http://www.tavrasm.org>  
[http://hobbes.nmsu.edu/pub/incoming/tavrasm-os2-1\\_17-eng.zip](http://hobbes.nmsu.edu/pub/incoming/tavrasm-os2-1_17-eng.zip)  
[http://hobbes.nmsu.edu/cgi-bin/h-search?key=tavrasm-os2-1\\_17-eng.zip](http://hobbes.nmsu.edu/cgi-bin/h-search?key=tavrasm-os2-1_17-eng.zip)

---

## December 26

cdrtools2-2.0

Enhanced OS/2 port of well known unix cd writing tools.  
<http://hobbes.nmsu.edu/pub/incoming/cdrtools2-2.0.zip>  
<http://hobbes.nmsu.edu/cgi-bin/h-search?key=cdrtools2-2.0.zip>

---

## December 26

WarpGoGo 1.10

New version WarpGoGo 1.10.

"WarpGogo is a (GUI) Graphical User Interface for the MP3 encoder Gogo-no-coda. With support for MMX,3DNow!, and SSE multimedia instructions available to modern CPU's. Gogo-no-coda offers improved encoding speed. Unfortunately, Gogo-no-coda for OS/2 is available only as a text mode application. WarpGoGo simplifies the use of this encoder, and adds some service functions."

<http://www.os2.cz/ed2>

---

## December 25

Spellguard - French ~German dictionaries on Hobbes

Hi:

I have just found French ~German dictionaries for Spellguard on one of my old archive CD's and have uploaded them to Hobbes. These dictionaries were made by some good soul years ago; I have used the German dictionary with good results but never the French. The readme together with the archive mentions the "combine" program that can be used to make a combined EN-DE dictionary, but this I haven't been able to find. I suspect that a similar effect could be had with copy /b but I haven't yet tried that.

You can currently find the dictionaries here:  
[http://hobbes.nmsu.edu/pub/incoming/sg\\_dedct.zip](http://hobbes.nmsu.edu/pub/incoming/sg_dedct.zip)  
[http://hobbes.nmsu.edu/pub/incoming/sg\\_frdct.zip](http://hobbes.nmsu.edu/pub/incoming/sg_frdct.zip)

Simon Wright

---

## December 25

New WarpVision GUI drop

24.12.2002

- + added RealVideo 1.0/1.3 (native)
- + added switch to show full path in Control window and Playlist window (switched via settings)
- + added show info at Movie window title bar (customized via skin settings and can be switched off)

21.12.2002

- \* cache enabled back (except mp3 audio)

Program URL: <http://os2.kiev.ua/>

## December 25

Smart Cache 0.79. HTTP proxy server and more

Smart Cache 0.79. is full-featured proxy caching server with some (now 21) SPECIAL features for faster, increasing privacy and offline web browsing. Good replacement for badly designed browser's cache. Supports SSL and HTTP/1.1. Main features: URL filter (no adv. banners), download files in background for later browsing, cookies filter, caching of 'noncacheable' pages, multiple logs, can fake Referer, User-Agent and Cookie headers, fast operation, very configurable garbage collection, data can be compressed for disk space saving, regexp support, download machine support, marking pages offline for refresh or download, cached data can be shared between OS/2, Linux, MacOS and Windows. Can be also used for web forwarding or transparent proxy. Proposed directory for placement: /pub/java/apps/internet/www

Program URL: <http://home.worldonline.cz/~cz210552/>  
<http://hobbes.nmsu.edu/pub/incoming/scache079.zip>  
<http://hobbes.nmsu.edu/cgi-bin/h-search?key=scache079.zip>

---

## December 25

Dani drivers

ATAPI filter driver, V0.3.13  
<http://hobbes.nmsu.edu/pub/incoming/daniatapi0313.zip>  
<http://hobbes.nmsu.edu/cgi-bin/h-search?key=daniatapi0313.zip>

CD boot filter driver, V1.0.2  
<http://hobbes.nmsu.edu/pub/incoming/daniboot102.zip>  
<http://hobbes.nmsu.edu/cgi-bin/h-search?key=daniboot102.zip>

IBM1S506 replacement  
<http://hobbes.nmsu.edu/pub/incoming/danis506r160.zip>  
<http://hobbes.nmsu.edu/cgi-bin/h-search?key=danis506r160.zip>

---

## December 24

GIMPS client for OS/2

Finding the 5 largest known primes. GIMPS - The Great Internet Mersenne Prime Search.

Program URL: <http://www.mersenne.org/prime.htm>

<ftp://mersenne.org/gimps/primeos2.zip>

"GIMPS requires a Pentium class computer that is on most of the time. The program runs at the lowest possible priority. You should not see any impact on your system's performance. The program will use about 8MB of memory and about 10MB of disk space."

---

## December 24

ZOC 4.10

A Powerful Terminal Emulator and Telnet/SSH Client for Power Users!

<http://www.emtec.com/>

---

## December 23

RexxMail build 20021223.141337 released.

A new build of RexxMail is available from my web site:  
[http://www.degeus.com/rexx/rexxmail\\_english.html](http://www.degeus.com/rexx/rexxmail_english.html)  
or  
[http://www.degeus.com/rexx/rexxmail\\_nederlands.html](http://www.degeus.com/rexx/rexxmail_nederlands.html)

where you can also view the RexxMail on-line tutorial, and the readme, history, changes, and tips 'n' tricks files.

The distribution ZIP file is also available from the Hobbes repository:

<http://hobbes.nmsu.edu/cgi-bin/h-search?key=rexxmail>

For an explanation of the major changes in this release, see the changes file at:

[http://www.degeus.com/rexx/rexxmail\\_changes\\_txt.html](http://www.degeus.com/rexx/rexxmail_changes_txt.html)

RexxMail is released under the terms of the GNU General Public License, see: <http://www.gnu.org/copyleft/gpl.html>

Best regards,  
Marcus de Geus

---

## December 23

z! update

theres a (small) z! update available @

<http://dink.org/z/zmsgbase.html?read=V3I7T3O2P2>

z! is a free mp3 player for os/2, tip of the day:

z! has a built-in stream finder (internet radio stations), press 'h' and type in a search string such as techno or rock and it will display streams matching what you typed in.

best regards,  
- dink

---

## December 22

NetGamePack v1.0a released

NetGamePack v1.0 alpha release is available for download from <http://os2.rulez.org/netgamepack/>

---

## December 22

Warpdoctor plug-in and status

The Rexx Plug-in now released as version 1.00. It is packaged as a WarpIN install.

The documentation has been completed. There is now a user guide, programmer's guide and programming reference. The plug-in and documentation can be found at [http://www.warpdoctor.org/plugin\\_page.html](http://www.warpdoctor.org/plugin_page.html)

Any questions, comments or bugs reports can be directed to me.

We are intending to use the Rexx Plug-in to solicit the input and perform the transfers and CGI program execution as needed.

All information, menus and screens/pages in the WarpDoctor site will come from data stored in the DB2 database and streamed to the browser using CGI programs. The data will be stored in the database in compressed format (gzip) and streamed to the browser as is, identified as Encoding: gzip. For those few users (and you know who you are) using older browsers not capable of handling compressed data streams the CGI program will decompress the data before streaming to the browser.

Where we are at:

-----

Having researched some EPM/HTML packages I have not found one that both looks promising and works. (I have some that looked good, and some that worked, but not at the same time)

Therefore the final steps are:

- 1) Write Rexx program for the plug-in that
  - a) for new data gets a unique identifier from the database
  - b) for changing existing data - downloads data to client
  - c) executes EPM with our macro and the input or change file
- 2) Write some Rexx macros for EPM. The macros will
  - a) add menu items (and hopefully toolbar buttons) for
    - view the HTML file
    - opens/updates a browser window with file contents
    - save file to database. This will
    - scan the file file img src=... tagschange the src value to a database query token  
gather local image files into a list
  - send HTML file and image files to server
  - invoke CGI program on server to import data

3) Write the DB2 triggers and table definitions that insure that the image rows associated with an HTML row are deleted when the HTML row is deleted.

4) Write a small DB2 CLP program that crams the data from the files into DB2 table(s)

The end is in sight.

Douglas Clark

---

# VOICE Newsletter - OS/2 User Group News

## User Group News

### December 23

General VOICE meeting tonight @08:00pm EST (01:00 GMT / UT)

There will be a General meeting of VOICE tonight (Monday 12-23-2002) @08:00pm EST (01:00 GMT / UT).

Topics will include confirming our new Marketing and Liason officers.

Due to a temporary problem with WEBBnet you will need to connect to one of the following servers:

207.168.37.51 (California)

fyrelizard.homelinux.org (Florida)

Port: 6667.

For further information on attending VOICE meetings and for links to download an IRC client please see:

<http://www.os2voice.org/meetinginfo.html>

---

### December 20

WarpDoctor Mtg

There is a WarpDoctor chat meeting this Sunday, 22 December 2002 at 3:00 ET (20:00 GMT). Visit

<http://www.timezoneconverter.com/cgi-bin/tzc.tzc> for timezone help.

\*\*\*\*\*

NOTE:

WEBBNET IS DOWN AT THE MOMENT.

+++++

Please use connect to either server 207.168.37.51 or

fyrelizard.homelinux.org to get the WD chatroom .

This a temporary condition, and you will be notified in this message of further developments.

\*\*\*\*\*

If you are unfamiliar with the procedure of visiting a chatroom, there is a set of detailed instructions at

[http://www.warpdoctor.org/IRC\\_ChatProc.html](http://www.warpdoctor.org/IRC_ChatProc.html).

Once again, you must use either server 207.168.37.51 or server fyrelizard.homelinux.org to get to the WD chatroom until further notice.

Please read the agenda at [http://www.warpdoctor.org/agendas/warpdoc\\_2002-12-22.html](http://www.warpdoctor.org/agendas/warpdoc_2002-12-22.html) so you will be ready for the meeting.

Thank you.

Walter F. Metcalf

WarpDoctor Co-ordinator

---

### December 13

WarpDoctor Mtg

There is a WarpDoctor chat meeting this coming Sunday at 3:00 ET (18:00 GMT). Visit

<http://www.timezoneconverter.com/cgi-bin/tzc.tzc> for timezone help.

As a reminder, there is a WarpDoctor group meeting on every Sunday at 3:00pm ET(18:00 GMT).

WarpDoctor IRC Discussions take place in the #WarpDoctor channel on the webbnnet IRC network. If you have trouble



connecting with Webbnnet, try using one of the alternative servers listed at <http://www.webbnet.org/server.html>.

If you are unfamiliar with the procedure of visiting a chatroom, there is a set of detailed instructions at [http://www.warpdoctor.org/IRC\\_ChatProc.html](http://www.warpdoctor.org/IRC_ChatProc.html).

Please read the agenda at [http://www.warpdoctor.org/agendas/warpdoc\\_2002-12-15.html](http://www.warpdoctor.org/agendas/warpdoc_2002-12-15.html) so you will be ready for the meeting.

Thank you.  
Walter F. Metcalf  
WarpDoctor Co-ordinator

---

## December 06

WarpDoctor Mtg

There is a WarpDoctor chat meeting this coming Sunday at 3:00 ET (18:00 GMT). Visit <http://www.timezoneconverter.com/cgi-bin/tzc.tzc> for timezone help.

As a reminder, there is a WarpDoctor group meeting on every Sunday at 3:00pm ET(18:00 GMT).

WarpDoctor IRC Discussions take place in the #WarpDoctor channel on the webbnnet IRC network. If you have trouble connecting with Webbnnet, try using one of the alternative servers listed at <http://www.webbnet.org/server.html>.

If you are unfamiliar with the procedure of visiting a chatroom, there is a set of detailed instructions at [http://www.warpdoctor.org/IRC\\_ChatProc.html](http://www.warpdoctor.org/IRC_ChatProc.html).

Please read the agenda at [http://www.warpdoctor.org/agendas/warpdoc\\_2002-12-08.html](http://www.warpdoctor.org/agendas/warpdoc_2002-12-08.html) so you will be ready for the meeting.

Thank you.  
Walter F. Metcalf  
WarpDoctor Co-ordinator

---

## November 29

WarpDoctor Mtg

There is a WarpDoctor chat meeting this coming Sunday at 3:00 ET (18:00 GMT). Visit <http://www.timezoneconverter.com/cgi-bin/tzc.tzc> for timezone help.

As a reminder, there is a WarpDoctor group meeting on every Sunday at 3:00pm ET(18:00 GMT).

WarpDoctor IRC Discussions take place in the #WarpDoctor channel on the webbnnet IRC network. If you have trouble connecting with Webbnnet, try using one of the alternative servers listed at <http://www.webbnet.org/server.html>.

If you are unfamiliar with the procedure of visiting a chatroom, there is a set of detailed instructions at [http://www.warpdoctor.org/IRC\\_ChatProc.html](http://www.warpdoctor.org/IRC_ChatProc.html).

Please read the agenda at [http://www.warpdoctor.org/agendas/warpdoc\\_2002-12-01.html](http://www.warpdoctor.org/agendas/warpdoc_2002-12-01.html) so you will be ready for the meeting.

Thank you.  
Walter F. Metcalf  
WarpDoctor Co-ordinator

---

# VOICE Newsletter - Feature Columns

## Feature Index

The Editors of VOICE speak out: No surprise:  
Retail versions of OS/2 withdrawn from  
marketing.

By: Mark  
Dodel

DrDialog, or: How I learned to stop worrying and love REXX - Part 5	By: Thomas Klein
»TCPA« and »Palladium« - another step towards immaturity or a step towards emancipation?	By: Eric Baerwaldt
The Thinkpad T30	By: Timothy Sipples
BackAgain/2000 Server Edition version 3.0 - A Review, Part 5	By: Walter Metcalf
OS/2 Tips	-
Letters, Addenda, Errata	-
Guide lines for Article Submissions to the VOICE Newsletter	By: The Editors

## VOICE Newsletter - The Editor of VOICE speaks out - No surprise OS/2 withdrawn from marketing.

### No surprise: Retail versions of OS/2 withdrawn from marketing.

An editorial view from Mark Dodel.

Happy New Year and welcome to 2003. Its been about 10+ years of reports of OS/2's death, yet it continues to survive. The latest brouhaha erupted last month when IBM released an [announcement](#) that really should not have been a surprise to those of us who have been using OS/2 for years. What was somewhat surprising was it was followed a day or so later by several articles announcing that "[OS/2 Alive And Well](#)" and "[OS/2 still sold here](#)". All citing an IBM spokesman as the source, these served as fodder for those who can't face the reality that IBM has been trying to get out of the PC operating system business for years. These dim bulbs still sing the praises of IBM and encourage people to buy expensive subscriptions to show support for IBM. All the while IBM has been doing all it can to discourage those of us who actually still use their products.

If you have been a VOICE newsletter reader for a while now, you may recall that we discussed this IBM OS/2 phaseout plan [over a year ago](#) from information we learned at [Warpstock 2001](#). "Device Driver enhancement and defect support will continue through 2004. Fee based transition services and product enhancement services as well as warranty defect support and software stack support will be available through 2006."

We all knew it would happen eventually, but still it was a shock to see [IBM announce the withdraw from marketing of all retail versions of OS/2 Warp 4 and Warp Server eBusiness](#). Included in that announcement is IBM's Software Choice subscription program. What this means is that you will no longer be able to purchase the listed items directly from IBM on or after March 12, 2003. Purchases can still be made from non-IBM sources as long as supplies last. At the end of the announcement, IBM stated that all the products would continue to be supported through December 31, 2004. All of this has been in IBM's plans from 1995 or so when Lou Gerstner told IBM to come up with a plan to deep six OS/2. Anyone that doubts this should browse through Gerstner's book "Who Says Elephants Can't Dance?". So with this IBM is pulling out of what little there is of an OS/2 retail business.

This only effects the listed part numbers, so OEM and TCO (Total Content Ownership) versions of OS/2 like Serenity System's [eComStation](#) are not changed. The December 2004 support date doesn't effect these sources of OS/2 either, as they can contract for support beyond even the December 2006 date that IBM has set as the final support date.

So what does all this mean to the OS/2 user community. If you work for a large OS/2 user or you have Serenity System's eComStation not much. If you have IBM's Software Choice, then you have to start wondering what kind of support and updates you can expect between now and December 31, 2004.

On the withdraw announcement they list "Replacement Product Information: None". On [IBM's Software Choice page](#) they are now touting Passport Advantage as a possible alternative to SWC. They don't give much detail other then "As an alternative to purchasing a Software Choice subscription for OS/2 Warp v4, existing OS/2 Warp V4 license holders can purchase a 1 year software maintenance after license for OS/2 Warp V4 D5C4NLL-OS/2 WARP INSTALL SW MAINT AFT LIC 1 ANNIV and can then optionally purchase a 1 year software maintenance renewal E1C4MLL-OS/2 WARP INSTALL SW MAINT RNWL 1 ANNIV."

IBM has dropped the previous requirements for enrolling in Passport Advantage, but there are only four types of memberships - Commercial, Commercial Purchasing CEO (Complete Enterprise Option) product categories, Academic and Government. Its

free to join now, so I went through the online entry form. At the end of collecting information about me (address, phone, fax, email) it gave me the message:

"Enrollment Request Confirmation.

Thank you for completing your online enrollment with IBM Passport Advantage. Your enrollment number is  
Once processed, you will receive your Passport Advantage Welcome Kit within 3-5 business days, which contains your  
Passport Advantage customer number. You will also receive your username and password to access the Passport  
Advantage Customer Extranet. To learn more about the program, visit our [Interactive Tutorial](#).  
If you have any questions about your online enrollment, please contact your eCustomer Care representative.  
Phone 1-800- 978-2246"

OK I'm game, I went through the tutorial on Passport Advantage. Well I tried. Didn't work with Mozilla 1.3a for OS/2. Looked at the [technical requirements](#). "System requirements: \* MS Windows 95/98/2000/NT". Hmmm, no OS/2 listed. "Necessary Web browsers: \* Netscape Navigator 4.51 to 4.75 or Internet Explorer 5.01 to 5.5" with an additional note that "The course does not support Netscape 6.0.". Not terribly Warp friendly are they? On the off chance that the web designer was some numbnut that had never heard of IBM's own operating system, I fired up Netscape 4.61, but got the message "Unsupported Java version", but I think that's because I have Java 1.3.1 as my default Java. I rarely use Netscape 4.61 any more, but it should work since there is no mention of Java as a requirement on the [technical specifications page](#).

OK, so I went to a different machine to see if I would have better luck. On my laptop running eCS 1.03 with Netscape 4.61, the tutorial "Passport Advantage Fundamentals" loaded in a popup window. There are 5 selectable units. Unfortunately clicking on anything on the screen got me nowhere. OK I still have windowsXP installed on the laptop, so I booted to that. Mozilla 1.2a of course didn't work with the tutorial, and I don't have Netscape 4.6x for windoze. That leaves microsoft internet explorer. So I ran that and not only do the links work, but there is sound. Wow, to bad IBM doesn't support this on their own operating system. The tutorial only lists DB2, Lotus, Websphere and Tivoli and Software Maintenance. I suppose OS/2 falls under Software Maintenance as I saw no mention of it anywhere.

After going through screen after screen of marketing babble, I finally get to a definition of Passport Advantage. "Passport Advantage is the way to do worldwide volume licensing of IBM distributed software. It is designed to provide support for our customers and to give customers access to update their global software acquisitions.". Now that sounds like a program for me... NOT. I am just a single OS/2 (well now eCS) user.

Trying to find out what PA actually includes, I found that purchasing products through PA involves volume pricing. Every product's price is based on the type of account (commercial (small and medium business), commercial CEO (I assume this is for large corporations), government and academic) and the actual amounts product you buy. There are 10 different pricing levels (they call them bands) depending on your volume of purchases. According to the tutorial the band you enter is determined by your initial purchase. For me with only 4 or 5 licenses I'd be in the lowest (but highest price) level. The next band starts at 100.

The tutorial didn't answer any of my questions about how this will work for OS/2 users. What will the price for OS/2 support be? Will this include the problem reporting and support they frequently mention? So I looked elsewhere on the site for some information as to what Passport Advantage can do for the OS/2 user.

On Lotus' site there is a link to an IBM Software Support Handbook <http://techsupport.services.ibm.com/guides/handbook.html>. I couldn't figure this out, but there is a [PDF version](#) which I downloaded. OS/2 is actually found a few times in the PDF version, the one of which I downloaded is dated from November 2002. Assuming this is the product one can buy through Passport Advantage, there is a listing in a table for "OS/2, DOS, Windows" there saying that "Customer downloads from BBS and WWW, 1 Fixpak per product Semi-Annually". Under "If things don't go right" OS/2 is listed with a Hotline phone number (512-750-0641), which I didn't call (Its not a toll free call like many of the other contact numbers). Hey that's an Austin Texas area code isn't it? So I assume the person answering (if in fact there is a person) would at least know what OS/2 is.

Here at <http://www.lotus.com/services/passport.nsf/secnav/software+maintenance> there is a table of what PA includes. This includes new licences, updates via download, media releases and "Access to IBM software technical support by anyone within customer's IT organization (not end users)". It does not specify if this support is free or if there is a charge.

So for now I will wait for my "Passport Advantage Welcome Kit" to see if that makes anything clearer. Is Passport Advantage a viable solution for the SOHO/small OS/2 user? I honestly can't say after spending a couple hours wandering about the Lotus web pages. Being forced to boot to windows to try to find out, is not making me feel warm and fuzzy though. The key will be if PA allows users to purchase non-withdrawn versions of OS/2 or at least ongoing support and at reasonable prices.

Either way those of us who want to have a non-Microsoft, non-Unix option, still have eComStation as a supported and still marketed choice. So I think there will still be a need for VOICE and this newsletter for the coming year and beyond. We remain dedicated to propagating information to help OS/2 and eComStation users to continue to enjoy their computing experience.

STOP THE PRESSES:

A few days before this issue went public I finally received my IBM Passport Advantage Username and Password. This allowed me to logon to the "Customer Site" on the [IBM Passport Advantage site](#).

**PASSPORT**  
 ADVANTAGE

Product Catalogs

**Catalog**

The following product catalogs are available to browse. To open a catalog, click on description link. Once opened, you will be given a full selection of ways to refine your search and select the products you wish to purchase.

1. [Passport Advantage Catalog for Database Mgmt Offerings](#)
2. [Passport Advantage Catalog for Informix Offerings](#)
3. [Passport Advantage Catalog for Lotus Offerings](#)
4. [Passport Advantage Catalog for Tivoli Offerings](#)
5. [Passport Advantage Catalog for Websphere Offerings](#)
6. [Passport Advantage Popular Offering Catalog](#)

**Passport Advantage Home**

- Account Information
- Program Information
- Online Ordering
  - Product Catalogs
  - Maintenance Renewal
  - View Shopping Cart
  - Saved Shopping Carts
  - Order Status
  - FAQs
- Manage Your Account
- Customer Care

No sign of OS/2, so I first tried "Lotus Offerings" and a search there on "OS/2" returned nothing. Not even Smart Suite for OS/2. Oh well next I tried "Popular Offering Catalog" and bingo. A search on "OS/2" turned up the following:

**PASSPORT**  
 ADVANTAGE

Product Catalogs

**Catalog Search**

Add to Cart
 Reset
 New Search
 Live Help
 Help

6 title(s) found - All prices shown in USD. Sort by:

Part Description	Operating System	License Type	Item Price	Select
<b>OPERATING SYSTEM OTHER</b>				
OS/2 WARP INSTALL LIC/SW MAINT 1 ANNIV (D5C4JLL)	OS/2	LICENCE & SW MAINTENANCE	248.00	<input type="checkbox"/>
OS/2 WARP INSTALL SW MAINT AFT LIC 1 ANNIV (D5C4NLL)	OS/2	SW MAINTENANCE AFTER LICENCE	165.00	<input type="checkbox"/>
<b>WARPSERVER</b>				
OS/2 WARP SERVER FOR EBUSINESS SVR LIC/SW MAINT 1 ANNIV (D5C4TLL)	OS/2	LICENCE & SW MAINTENANCE	2,062.00	<input type="checkbox"/>
OS/2 WARP SERVER FOR EBUSINESS SVR SW MAINT AFT LIC 1 ANNIV (D5C4XLL)	OS/2	SW MAINTENANCE AFTER LICENCE	1,375.00	<input type="checkbox"/>
OS/2 WARP SERVER FOR EBUSINESS USER LIC/SW MAINT 1 ANNIV (D5C52LL)	OS/2	LICENCE & SW MAINTENANCE	76.50	<input type="checkbox"/>
OS/2 WARP SERVER FOR EBUSINESS USER SW MAINT AFT LIC 1 ANNIV (D5C55LL)	OS/2	SW MAINTENANCE AFTER LICENCE	51.00	<input type="checkbox"/>

(Select Language)

[Legal](#)
[Privacy](#)

So for \$248US you can buy a new OS/2 license, with a one year software maintenance. My understanding is this does not include any media, just a license and downloading of fixes. I found no listing for media, but I was told you can purchase it for about \$20US. One year of just software maintenance is \$165US.

I hate buying maintenance contracts, so most likely I will never buy again from IBM. For me eComStation makes the most sense since I get access to all the fixes and drivers with just my initial purchase. All-in-All, I'm thankful we have a choice.

---

**VOICE Newsletter Update:** The planned page for free small advertisements by freeware authors and OS/2 users is going to become part of the VOICE home page soon. Its delayed as our webmaster has just relocated and isn't as yet back up to full speed yet. If you are interested, please contact us at [ads@os2voice.org](mailto:ads@os2voice.org).

We are always interested in your thoughts and views on subjects related to OS/2, and would like to see opinion/editorial pieces as well as hardware/software reviews and HowTo articles. If you can help by writing an article please contact me at [editor@os2voice.org](mailto:editor@os2voice.org).

Our Newsletter team is in need of backup. A few people have joined after we published a call for help in one of the last issues, but we could do with some more. To be able to help you don't have to be a very good translator or HTML programmer. If you have profound knowledge of English or German spelling and grammar, you can also help with editing the articles. Some hints on translation activities are also available in the [FAQ](#).

**Warp Doctor:** Have an idea for Warp Doctor? You can send your comments directly to the Warp Doctor web guy Jeremy at [rs@fyrelizard.com](mailto:rs@fyrelizard.com) or better yet attend one of our Warp Doctor Team meetings, weekly on IRC.

Everyone's help is required to keep this project going. Please note the change in schedule again. The team meets every Sunday at 3PM EST (20:00 GMT) now on IRC in the warpdctor channel on the WEBBnet IRC network. The alternate Sunday schedule was too confusing. For more information on attending online IRC meetings please see the VOICE Meeting Information page - <http://www.os2voice.org/meetinginfo.html>.

**VOICE Online Update:** This month the general member meetings are scheduled on January 6 and 20 at 8PM EST (01:00 GMT). Everyone interested in OS/2 or eComStation is invited to attend either or both of these sessions in VOICE on the Webbnet IRC network. For more information on attending online VOICE IRC meetings please see the VOICE Meeting Information page - <http://www.os2voice.org/meetinginfo.html>.

If you have an idea for a Speakup event, please submit it to [liaison@os2voice.org](mailto:liaison@os2voice.org), and we will try to schedule something. As always, please be sure to check out the updated [VOICE Future events Calendar](#) in this newsletter or on the VOICE website at <http://www.os2voice.org/calendar.html> for more details on future VOICE events.

**This month** Thomas Klein returns with part five of [DrDialog, or: How I learned to stop worrying and love REXX](#). He continues with his overview of development of REXX programs with GUI using the free development environment DrDialog by IBM. This should be interesting for anybody, especially for those who have always wanted to write their own OS/2 applications, but were afraid of the high learning curve of PM programming.

Next, Eric Baerwaldt gives us a few of the potentially scary future of "Secure computing" with his editorial on [»TCPA« and »Palladium« - another step towards immaturity or a step towards emancipation?](#). I had heard of TCPA and Palladium, but had no idea what they were. Yet another reason to not run the operating system of the masses.

Then Timothy Sipples gives us a review of a beautiful machine with support for OS/2, [The Thinkpad T30](#).

Walter Metcalf is back with his fifth and final installment on backing up your system with CDS's [BackAgain/2000 Server Edition version 3.0 - A Review, Part 5](#).

Finally we have the VOICE Newsletter [OS/2 Tips page](#) and the [Letters, Addenda, Errata page](#). If you have any OS/2 or eCS tips you've uncovered, please send them to [tips@os2voice.org](mailto:tips@os2voice.org). If you have any comments or suggestions about the newsletter or articles in it, please send them to [editor@os2voice.org](mailto:editor@os2voice.org).

That's it for this month. Upcoming articles include an update by Alfredo Fern ndez D  az of his July 2000 article on the current state of booting OS/2 from a CD, a review of a USB memory card reader by Mark Dodel and the next articles in the series on DrDialog.

Mark Dodel, Christian Hennecke and Jason R. Stefanovich  
VOICE Newsletter editors

---

## VOICE Newsletter - DrDialog, or: How I learned to stop worrying a 5

### DrDialog, or: How I learned to stop worrying and love REXX - Part 5

By [Thomas Klein](#)   January 2003

---

This months article is quite short. Both job-related problems and seasonal activities with my family didn't allow for me to spend the time I had originally hoped to have available. On the other hand I didn't know what to write about. In my mind an ongoing



discussion of controls would have been too boring. As a matter of fact, after last month's issue you should actually be able to use Drdialog's online help system to discover the necessary information about the remaining controls. Nevertheless we'll do a detailed discussion of the container control next month, as it is a very useful and astonishingly feature-rich (but therefore quite complex) control.

But what to talk about today?

I would like to introduce you to some features that are very useful at design time. The array tool and the group tool. In addition, we'll talk about the "notepad area" of the code editor window.

The array tool

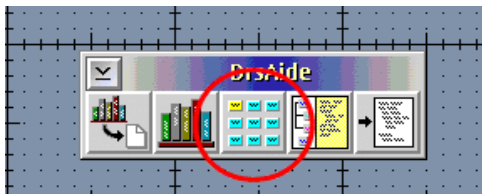
Up to now, we only referred to a dialog made up of few different controls. But imagine a data entry dialog with multiple entry fields. Such a dialog will force you to do a lot of dragging, moving, sizing and aligning of the fields until it looks "neat". And each field that you forgot or you might find usable to have at a later moment will make you do the same stuff again when inserting it: Moving, sizing, and so on. Drdialog's design environment provides two great tools for dealing with this design issue.

If you want to have multiple occurrences of the same type of control on your dialog, you can create them manually by using either of the two ways we have previously discussed (dragging from controls window or using the dialogs context-menu). This might be suitable if you only have two or three controls of the same type placed in different locations of the dialog.

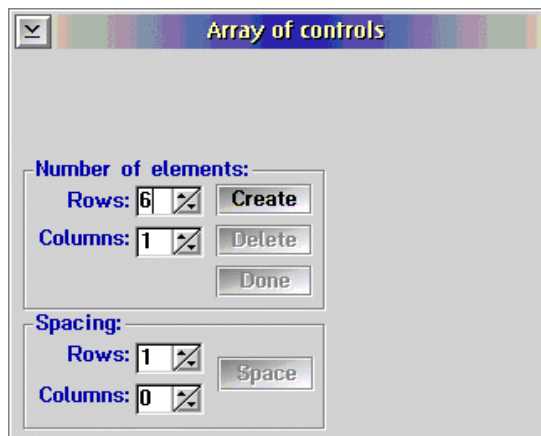
If you happen to need - let's say - six text entry fields in a column, properly adjusted and all having the same height (and even the same width) this will end up in a lot of manual work steps and checks. Such tasks can easily be accomplished (in a fraction of the time as well) by using the array tool. But where to find it? Answer: The array tool is part of the "DrsAide" tools selection available via the DrsAide icon in the tools selection window.



This will invoke the DrsAide tool window, providing several icons representing a kind of extensible collection of "plugins" to Drdialog's design environment, among such you'll find the array tool icon:



Clicking this icon will bring up the array tool window:



It's quite self-explanatory, but here we go with some additional hints:

The creation process itself works in a "copy" way - that is, if you want to create an array of a specific type of control, you'll have to provide the first occurrence of it by using the "standard" manual way as usual. Once you edited the field's properties (the STYLE settings that is), you can go on by creating the desired amount of additional occurrences. Example: Ending up with six entry fields in a column will mean that you create the first (upper) one in the usual way, apply the desired Style settings, and tell the array tool to create six by one controls from it (rows=6, columns=1).

Note that the array tools window is left open during your session until you explicitly close it and that clicking the CREATE push button will always refer to the control currently selected on your dialog window.

The "copy" process can be undone by clicking the Delete push button.

The entry fields of the "Spacing" section are used to tell the "copy" function about the spacing of the array elements - that's to say the distance between each of the controls created. Note that these are calculated in "pixel" units.

Once your array looks just like you wanted it to, you should use the Done button: This won't close the array tools window, but it'll somehow "finalize" the controls array and re-initialize the array tool in preparation of creating another array. Note that the Delete button (undo) won't be available any more for the array just created.

As said above, the array tool will create exact copies of the first control in matters of Style (and even text content in our example). If you assigned a name to the initial control, the array tool will use this name along with an underscore and an

increasing digit starting with 2: An entry field called "myEntryField" that is used to create five additional entry fields (giving an array of six) will end up in the following names:

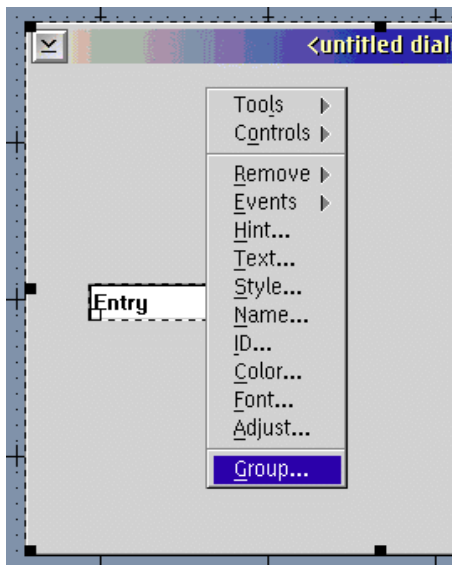
```
myEntryField,  
myEntryField_2,  
myEntryField_3,  
...  
myEntryField_6
```

One (the only?) drawback with the array tool is, that you won't get an identical name scheme for the entire group of controls automatically; not even by changing the first controls name: "myEntryField\_1" is not allowed as "manually assigned" name... you might want to give it a try yourself - looks like an unfixed glitch to me. If you really need to have identical names, you should either start with "unnamed" controls or use a numbering without underscores like "myEntryField1". This will give you "myEntryField1\_2" and so on, but at least this can be changed into "myEntryField2", "myEntryField3" ...and so on for the "copied" fields.

The group tool



This is a collections of incredibly intelligent functions for aligning, sizing and even "equalizing" multiple controls, even if not of the same type of control. The group tool window is either available from the master tools selection window as an additional tools window (having the ability of being kept open) or from the context menu of any control:

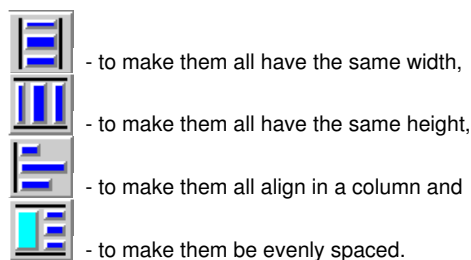


The reason for me calling it "intelligent" is rather the fact of how various considerations are respected by them when dealing with finding positions and sizes of controls within a dialog window automatically. I won't go into details as there is extensive information available in DrDialog's online help, along with great examples for each of the functions represented by a single icon. From the online helps main content select "Tools window" then "Group Window". You'll find information at your fingertips.

Just one short example on how useful these tools are:

Imagine that you just created five entry fields with different initial contents. They are intended to be in a single column with the same width and height, all well-justified and evenly spaced. But they aren't of course. ;) Now, you could check each of them for position and size... but this will be "dirty work", right? Why not let the group tool do the stuff for you?

First, make sure that ONE of the controls has the desired width/height and justification. Then, use Shift-Click to select the other controls and bring up the group tool window and click...



And once you did those four clicks, you'll notice: Wow, tremendous speed-up in work, right?

The notepad area

While working with DrDialog I found myself frequently in search for specific code parts. A famous example is the RxFuncAdd call statement (that you might know already). It is used to load additional functions from DLLs that can be used to extend REXX'S

functionality for special purposes. If you're not a real newby to rexx, you might know it...

```
CALL RxFuncAdd 'SysLoadFuncs', 'RexxUtil', 'SysLoadFuncs'  
  
CALL SysLoadFuncs
```

This is used to load the SYS... functions in rexx that enable you to do neat things like searching for files using wildcards, retrieving lines from textfiles and so on... yep - I know it too. But to be honest, I only recognize it as the "LoadSysFuncs"-stuff whenever I see it somewhere, but when asked to write this statement from scratch, I always end up looking for it in rexx.inf. ;)

Now, with the notepad section of Drdialog's code editor (which is referred to as DrRexx as well), you can assign it a notepad page on its own and write it down. It won't be used as executable code but just as a sketch-pad like note. Okay, but what is special about that? Very simple: All "notebook pages" of DrRexx are stored together with your design environment. Regardless of the actual project (program) you're working on, you'll have all of your notes available at hand. If you start a new project, they are there already and can be copied/pasted into the code parts of your program. Of course you're free to store whatever you want, like SQL statements or parts of help text for example.

Next month, we'll check that container control that can enhance your program in various ways, providing lots of nice features. Then, we'll take a look on the "functionFOR" syntax, providing a somehow "dynamic" way of treating controls at run time. After this, we'll start with some basic REXX statements and functions and the Sys...-calls before moving on with our sample application that will finally close our series (except for things like database access or issues that I forgot to mention so far).

I won't leave you without wishing you all the best for 2003 - may it be full of love, peace and health for you and your beloved ones. See you!

---

#### References:

GuiObjectREXX Yahoo! group: <http://groups.yahoo.com/group/GuiObjectREXX/>  
News group for GUI programming with REXX: <news://news.consultron.ca/jakesplace.warp.visualrexx>  
Download from Hobbes: <http://hobbes.nmsu.edu/cgi-bin/h-search?key=drdialog&pushbutton=Search>

---

## VOICE Newsletter - »TCPA« and »Palladium« - another step towards emancipation?

»TCPA« and »Palladium«  
- another step towards immaturity or a step towards emancipation?

By [Eric Baerwaldt](#) © January 2003, Translation: [Philhard Ackermann](#)

---

»Enlightenment is the egression of Man  
from his self-inflicted immaturity.«  
*Immanuel Kant*

Almost unnoticed by the general public are some new mysterious buzzwords around in the world of IT professionals: »TCPA« and »Palladium«. I found them interesting enough to dig a little bit deeper into them, because the very fact that the term »Palladium« in this case, doesn't mean some precious metal as it does in science, but has been established by »Microsoft«, bodes something ill and raised my suspicions. The much more neutral term »TCPA« (standing for »Trusted Computing Platform Alliance«) on the other hand seems to raise positive or at least neutral emotions at first - but really only at first, because if one becomes aware of the horror scenario imposed by »TCPA« combined with »Palladium« this should be enough to cause nightmares even for the most low-brow users.



So what are these terms really about, what are the intentions behind them and what do the new technical solutions they imply mean for us as IT users?

The »TCPA« is a joint-venture of leading hardware manufacturers like IBM, HP, AMD and Intel which intend to make the PC platform more secure by implementing special new hardware technologies. As all of us are aware the monoculture in the area of operating systems caused by the unbearable monopoly of the »Microsoft« company, which, in combination with the bad quality of their software products, has caused a genuine flood of computer viruses, so-called trojan horses, worms and security leaks which can make the use of a computer system quite annoying. Now that's exactly what the companies participating in »TCPA« are trying to deal with. They intend to do so with the help of a so-called »Fritz« chip (from the name of US Senator Fritz Hollings) - a noble pursuit. Under the hood this Fritz chip is nothing but a crypto unit which is planned to be integrated into forthcoming generations of personal computers to improve their overall security. The chip stores a bunch of hardware and user specific keys. The instant the PC gets switched on the Fritz chip starts to work, checking every key it has in store. At first it examines the BIOS, then all BIOS extensions implemented by the plug-in cards found in that particular machine. Then it checks the hard disk, and after that it even examines the boot sector, the boot loader, the OS kernel and every device driver. Since it calculates a checksum on each of these steps and generates a unique 160 bit number by combining the results of its examination with some special key, Fritz has complete control over the entire computer system at any given time.

That raises the very first problem for PC users: even a flash update of the PC's BIOS would render the whole system inoperative, because afterwards the numbers calculated by Fritz at boot time would no longer equal the certified values stored inside the chip's tables. At times where BIOS updates are quite common even with consumer products because of sloppily implemented BIOS code the Fritz chip wouldn't really be a blessing for the average user. The same goes for those trying to attach, for instance, a new video card or some larger hard disk - any modification of a hardware which is based on a Fritz chip leads to a, most probably somewhat expensive, re-certification of the entire system to re-achieve »TCPA-compliance«. This re-certification process includes an online verification and readjustment of that machine's internal compliance tables against a hardware certification list (HCL) and a serial number revocation list (SRL).

If Fritz has found everything to be »TCPA compliant« at boot-time, it transfers control to the operating system. That's the point where, as we might have expected, »Microsoft« with their »Palladium« technology joins the game. As soon as the user starts an application, it gets verified against the SRL values of the Fritz chip's internal tables. If the application doesn't use a valid license or serial number or if its license has been revoked, it simply won't be allowed to run. If the application turns out to be »TCPA compliant« and gets released and is allowed to run, the machine goes online and checks against another list containing revoked documents (DRL), to prevent the user to open files he has no authorization for.

So, what at first seems to be an effective countermeasure against viruses, trojan horses and worms in fact turns out to incapacitate the user. Of course »Palladium« is fancied by members of the recreational industry, because it might be capable of aiding them in their struggle against unauthorized reproduction and distribution of copyrighted products via the internet, and thus offering the possibility to effectively dry up mp3 file swap networks and similar services, thanks to »Microsoft«. Even the use of a PC to copy some song for private purposes is most effectively prevented; so, thanks to »Microsoft«, those companies will be able to fill their already cram-full pockets with even more cash!

Of course the user still has the choice whether to install and use an application that lacks »TCPA compliance« on his home machine. When »Palladium« gets aware of such an application, the entire system is declared to be 'compromised' and any compliant application including all their files are shut down. What use such a system might afterwards be is not too hard to guess.

But let's step a little further and consider the aftermath of such a kind of technology:

1.

All those SRLs, DRLs und HCLs that are absolutely necessary to confirm a PC's compliance will be stored and accessed from some central spot on the internet. This means that hackers don't need to attack individual PCs any longer, but can instead concentrate their efforts on these servers, and may therefore be able to immobilize millions of machines with a single successful attack.

2.

It doesn't take much imagination to picture how »Palladium« might deal with unwanted products by some Microsoft competitors: When a certain software product is intended to be certified as 'non-compliant', it may just be put on »Palladium's« »black list«. Then, after such an application gets started, the machine it runs will be »compromised« and thus only of limited use for the owner. That way most people would rather consider using 3rd class »Microsoft« spyware for the next time...

3.

Certifying software and files means big bucks - there are estimates about the cost for a single application to be in the range of 100000's of dollars. As a result of this licensing scheme the freeware community would quickly vanish from the scene. Thousands of programmers who have spent many hours and much effort to produce quite valuable products given away for free would, thanks to »Microsoft«, a convicted illegal monopolist, no longer have neither the chance nor the motivation to still offer their oftenly most innovative products to the public.

4.

The whole area of GPL-licensed products would simply be wiped off the landscape, because on one hand there would be a large amount to be spent in certification without any income on the other hand. Thus one of the most dangerous »Microsoft« competitors, the community of developers of GPLed software products, who oftenly work for idealistic and ethical reasons, would be gotten rid of with a single blow.

5.

»Microsoft's« monopoly position in the OS market would be even stronger than before, because competitors' OSes would, if they were to be able to deal with a Fritz chip and a »Palladium« environment, also have to be designed to

be »TCPA compliant«. For OS/2 WARP, most of those Linux distributions and systems like FreeBSD, NetBSD or even BeOS and (with some exclusions) QNX the need for »TCPA« and »Palladium« compliance would mean the extinct from the PC market, because without that compliance these often superior OSes would be considered 'insecure'. OS/2 WARP and eComStation would be abandoned and erased by organisations like banks, insurances and other professional customers, in favour of mostly inferior »Windows« systems. The one and only alternative as of today might then be HP-Linux, because HP already work on their Linux product to achieve »TCPA« and »Palladium« compliance.

6.

With the »Palladium« system the open, democratic structure of the internet would be finally buried and replaced by a »Microsoft« owned environment where freedom of choice and opinion would be monopolized and all content censored by a single company. By freely designing their system of certification and licensing fees, »Microsoft« could effectively prevent any distribution of criticism via documents or by distribution of software products. On top of everything, even news services other than those owned by »Microsoft« would be affected - voluntary and creditable initiatives like, for instance, VOICE, who have designated themselves to the enlightenment of the OS/2 community, would have to pay certification fees to »Microsoft« to achieve »Palladium« compliance for each and every article to prevent to be blacklisted on those DRL servers. The internet as a means of distribution of democratic ideals would be destroyed and would degenerate to an organ of »Microsoft«.

7.

Because of the tight interconnection of »Palladium« and the Fritz-Chip with hardware and software the 2nd hand market for software products would be disrupted, since, because of the encryption involved in the process, a software product once certified by the TCPA and »Palladium« would be strictly confined to a particular machine. For »Microsoft« this would mean an old dream to come true: anyone purchasing a new PC would also be forced to newly buy Redmont software, because the software from the old machine could only be transferred by clearance of the old serial numbers - something that is simply not mentioned in the according standardisation guidelines.

The horror scenarios illustrated in this article don't seem too absurd: Bill Gates has some strong allies within the recreational industry, all of them trying to maximise their profits at any cost, even if that not only means to hollow basic democratic and ethic principles, but even to openly spurn them or lay them aside. The aftermath of his new technology is not yet being discussed in public; until now, Gates has always attached great importance on being a protagonist of the struggle against illegal copying for the sake of the software and recreational industry, and allegedly for the benefit of the end user. With »Palladium« »Microsoft« has, almost hidden from the public and once and for all, crossed a line which, until now, has prevented the alleged protagonist Gates from enforcing his copyrights: now it's all about complete control of the informational society by a company that has repeatedly been convicted of criminal actions - a threat of world domination of mass media by a small clique, backed by a bunch of international mass media corporate groups acting in good faith, which seemingly haven't realised yet that, blinded by their addiction to profit, they are turning themselves over to a man, who others consider to be the most dangerous contemporary since Adolf Hitler.

It's about time that all democratic people among IT professionals and users get up, rub their eyes and start to react, because:

»You must not wait until the snowball has become an avalanche. You have to tread the running snowball. The avalanche can't be held up any more. It will only stop once it has burried everything underneath itself...« *Erich Kästner*

---

## VOICE Newsletter - The Thinkpad T30

### The Thinkpad T30

By Timothy Sipples © January 2003



## ThinkPad T30, model number 2366-MU1.

This model is a "special build" (for a corporate client) but closely parallels the models generally available. Mine has 512 MB of RAM, and it is expandable to 1 GB of RAM, with a mobile Pentium 4 processor. (Many P4M speeds are available, depending on model.)

### Operating system tested:

OS/2 Warp Version 4, FixPack 16, Device Driver Pack 3, kernel update 14.093a (October 28, 2002). (This is roughly equivalent to OS/2 Warp 4.51 or the first release of eComStation.) Also running with TCP/IP Version 4.31, including WR08706 (MPTS service update) and UN02206 (TCP/IP 4.31 service update). Note that to apply WR08706 and UN02206 you MUST specify backup directories in the Corrective Service Utility (Fixtool). Otherwise, the service updates are not applied! For Warp 4, updated boot diskettes (listed as Version 1.06 on the IBM ThinkPad Device Driver Matrix web site) are essential, and you must have some means to load the contents of the CD-ROM when you boot from diskettes. This model has one Ultrabay, so you'll need to use old familiar tricks, like copying the contents of the Warp 4 CD to a FAT16 partition on your hard disk in advance. Updated boot diskettes are available from the IBM ThinkPad Device Driver File Matrix web site for this model. Since OS/2 Warp 4.5x and eComStation have bootable CDs for installation, this is not a problem in those cases.

Warp 4's boot partition must be completely below the 1024 cylinder boundary, which on this ThinkPad results in a roughly 7 GB HPFS partition (if you want to take the whole space below cylinder 1024). OS/2 Warp releases with Logical Volume Manager (4.5x), and all eComStation releases, do not have this problem.

Get the updated kernel on right away after installation. The 1996-era kernel and loader included with original OS/2 Warp 4 is too old to boot this machine. I believe the updated Warp 4 boot diskettes include a new enough kernel and loader, but I just put 14.093a on straight away. Warp 4.5x and eComStation users probably don't have this problem.

Following are the supported versions of OS/2 for the Thinkpad T30:

- OS/2 Warp Convenience Package 2 V4.52 with FixPak XR\_F001, or later
- OS/2 Warp Convenience Package 1 V4.51 with FixPak XR\_C002, or later
- OS/2 Warp 4.0 with FixPak XR\_M016 or later and Device Driver FixPak XR\_D002 or later

### Video:

ATI RADEON Mobility 7500 type chipset, with 1024x768 active matrix 14.1 inch LCD in my machine. (Other T30 models have different screen resolutions but the same RADEON chipset as far as I know.) Works perfectly with SciTech Display Doctor Version 7.11/IBM Special Edition driver. This model came with 16MB of VRAM and is capable of driving an external monitor at up to a resolution of 2048x1536, with the LCD in "pan and scan" or shutoff. The external monitor/projector switching works fine. Like all other ThinkPads that I've seen, just hit **[Fn]-[F7]** to turn on or off the external monitor plug. No problem doing your Lotus Freelance (or StarOffice) presentations.

By the way there's an S-Video out port which is cool for recording presentations to video tape, for example. Downside is that you lose the PS/2 keyboard/mouse port, so you have to go with USB or get the docking station or port replicator to hook up a PS/2-style keyboard or mouse.

### Audio:

Analog Devices (ADI) SoundMax. Works perfectly with Version 3.1.1 Analog Devices driver, available from the IBM Web Site or Hobbes. (Version 3.07a is listed as a driver for this model ThinkPad, but the 3.1.1 driver, which is about a year newer, seems to work fine, so I'm running that.) I'm very pleased, at least so far, since the T23 had some audio oddities unless you used a backlevel Crystal Audio driver, as noted in my T23 report. There's even a little mixer utility that Analog Devices thoughtfully included to adjust volume of the various audio inputs and outputs -- simple and effective. Win-OS/2 audio is supported. Haven't tried turning on audio from Innatek's Virtual PC yet.

### Hard Disk:

On this model the drive is 40 GB IDE. Works perfectly with any recent *IBM1S506.ADD* driver version (such as the version on the updated boot diskettes) as well as *DANIS506.ADD* (which I'm using). The hard disk is not particularly easy to hot swap, but you don't have to take the whole system apart either. Not something to do daily, but every month or so isn't out of the question if you need to. (If you do need a daily swappable hard disk, get the Ultrabay hard disk adapter.) Any standard notebook IDE hard disk (in the appropriate form factor) should be compatible, so there's future upgrade potential. All the standard hard disks support SMART, and there are SMART utilities for OS/2 Warp to monitor the health of the hard disk and to get advance warning of potential, pending failure. (The *DANIS506.ADD* package includes a SMART utility, for example.) The T30 is capable of using a BIOS-protected system recovery partition, but I haven't done anything with this feature.

### Parallel Port:

No difficulties. I even used an old Micro-Solutions Backpack 4X parallel port CD-ROM with its OS/2 Warp driver (Version 3.00), and it worked flawlessly. The parallel port configuration is controlled in the BIOS or with PS2.EXE, and EPP and ECP modes are available.

### PCMCIA (CardBus):

PCMCIA/Cardbus slots work perfectly with the currently available PC Card driver (Version 5, I believe) available on the OS/2 Device Driver Pak On-Line web site. Tested a standard PCMCIA modem (no problem) and the IBM Auto 16/4 Token-Ring Credit

Card Adapter so far. The Token-Ring adapter was tough to get working, but it does work with Version 3.46 of the *IBMTOKCS.OS2* driver. That version of the driver is included in MPTS WR08706 (and possibly other MPTS releases, but not the stock MPTS release included with the TCP/IP 4.31 download). Also, you must specify the following parameters in the

```
[IBMTOKCS_nif]
```

section of \IBMCOM\PROTOCOL.INI (or the equivalent in the MPTS graphical interface):

```
IOBASE=0xA20

NETADDRESS="xxxxxyyyzzzz"

INTERRUPT=9

PCMCIA

ENHANCEDMODE="NO"

RAM=0xD800

MMIO=0xDC00

RAMSIZE=16
```

There may be other settings in that section of *PROTOCOL.INI*. Leave those other settings in, unless they conflict with the settings provided above. Substitute a 12 digit hexadecimal string in place of xxxxyyyzzzz above, such as 5123ABCD8943. This address must be unique on your network! If you do not set up a NETADDRESS, you cannot hot swap the Token-Ring adapter. (Under some circumstances you can with the NETADDRESS.)

You'll probably need to use these *PROTOCOL.INI* settings for any IBM Token-Ring adapter that predates the IBM Turbo Token-Ring Credit Card Adapter. If your adapter has the word "Turbo" or "CardBus" in its name, it'll probably work just fine with the default MPTS settings. (The Turbo adapter will also work with the same driver, same extra settings, if you wish to swap adapters like I do sometimes. The CardBus Token-Ring adapter uses a different driver, the same one as the PCI Token-Ring adapters.) I briefly tested the Turbo adapter with the default MPTS settings, and that did work.

I'm delighted with the network performance, by the way. Fastest transfer rates I've ever seen with any notebook, rivalling my desktop with a PCI Token-Ring adapter, and this older PCMCIA Token-Ring adapter is not supposed to be particularly fast.

Probably best to set up multiple *CONFIG.SYS* files and use the OS/2 Warp boot menu to choose between them. I have three: dial-up, Token-Ring, and ethernet. Very easy to do, although you do have to make sure to keep your CONFIG.SYS files (and PROTOCOL.INI files) in sync as you install software. Best to do the multiple CONFIG.SYS files last.

### System Configuration:

Works perfectly from the BIOS setup program (hit **[F1]** at bootup), and controls all power management features. (IBM was wise to put all the system settings in the BIOS program, so Linux users are happy, too.) Also, get the ThinkPad T30 DOS Configuration Program Diskette, and follow the OS/2 Warp installation instructions. That installs a program that runs in a DOS window called *PS2.EXE*. *PS2.EXE* is a command line program that lets you control nearly all BIOS settings, such as power management features, without rebooting to access the BIOS setup program. (Some configuration changes do require a reboot anyway, though, such as enabling or disabling a built-in device like infrared.) You should also install the ThinkPad System Management Driver (for OS/2) from this same diskette. You might not have any clue it's there, since the diskette is labeled "ThinkPad Configuration Utility Diskette for DOS" on the web site, but, sure enough, it's there. Read the README on the diskette.

### Infrared:

Not tested, but should work just fine. Nothing special here as far as I know. (The ThinkPad infrared driver on Hobbes supports infrared printing, for example.)

### Volume controls:

No problem.

### Special keys:

This system has a "ThinkPad" key, plus some other page navigation keys. I haven't bothered to try to turn them on, but it might be possible to map them to something useful with stuff from Hobbes. The keyboard otherwise works fine with the standard built-in driver, although by default it starts repeating a bit too fast for my tastes, and then it doesn't repeat fast enough when it starts. (OK, I had to find something! :-))

### TrackPoint:

Works perfectly with the standard driver, at least with Device Driver Pack 3. You should explicitly turn off the Ultranav in the BIOS during installation. This is one of the scroll-type new style TrackPoints (with the third button in the middle), and I'm told that feature works fine, too, if you bother to install the driver. I haven't. If your mouse pointer starts to drift without explanation, as if a ghost was driving, just let go of the TrackPoint and it'll recalibrate all by itself and stop drifting, just like any other ThinkPad.

#### **Ultranav:**

This is a touchpad-type pointing device built into the unit, with two mouse buttons. (T30 models with Ultranav have VERY large wrist rest areas as a consequence.) It supposedly works just fine (after installation of Device Driver Pack 2 or 3) with the standard *MOUSE.SYS* driver if you turn it on in the BIOS. I haven't bothered -- I've always liked the TrackPoint.

#### **Power Management:**

With the standard, reasonably recent *APM.SYS*, suspend/resume works, although, depending on whether you have a card in a slot, it may not suspend fully. (Some cards have to be powered down in the PC Card Director or removed.) Unlike my T23, where I was having problems suspending if any card was ever inserted into either slot, even if the card was removed, this T30 does not have that problem. Also, hibernation works if you set up a FAT16 partition and use the special boot diskette (in the IBM ThinkPad Device Driver Matrix web site for this model) to set up the hibernation file. I haven't bothered, since suspend keeps the system in a "hold" state for up to around a week.

If you boot to another operating system that handles power management differently, such as Windows 2000 or Windows XP, I recommend powering down before booting into OS/2 Warp (or vice versa). I haven't confirmed any problems on the T30, but, on the T23, that was a problem with power management. I can't seem to find any impact (positive or negative) with *APMDAEMN.EXE* running or not. (*APMDAEMN.EXE* is included in recent OS/2 Warp 4 fixpacks, including FixPack 16, all releases of eComStation, and all OS/2 Warp 4.5x releases.) I have it running from a **RUN** line in my *CONFIG.SYS*, as directed by the fixpack.

All power management indicator lights (battery indicator, suspend indicator) work just fine, as do the hard disk activity light and the rest. Screen blanking (if enabled in the BIOS or with *PS2.EXE*) works, so remember to turn it off if you're doing a presentation and will want to leave the system on the same screen for a long time, at the risk of burn-in. (LCDs can suffer from burn-in over time.) Even stuff like resume (wakeup from suspend) works if the modem line rings (if you have that feature turned on). Intel SpeedStep support (a.k.a. Geyserville, included in OS/2 Warp FixPack 10 and higher) works just fine, too -- the processor will speed up when needed and slow down when not to save power. (You can control SpeedStep behavior in the BIOS setup program or with *PS2.EXE*.) Hard drive power down/resume works, too.

Note that the T30 gets pretty uncomfortable on your lap, since the newer processors generate an awful lot of heat. IBM does a great job getting rid of that heat, but it has to go somewhere. Leave the ThinkPad on a table instead of your lap. Your lap will thank you.

#### **Ultrabay:**

I've tested both the diskette drive and the DVD/CD-RW combo drive. Both work fine. I haven't tested hot swapping, but it might work with *DANIS506.ADD* (and after suspending). Note that the diskette drive won't allow booting unless you have "Legacy Boot" (or something like that) turned on in the BIOS. I turned it off inadvertently, and my system wouldn't boot from diskette until I turned it back on. (It's easy to figure out.) If you have a USB diskette drive, the T30 will support booting from that, even for non-USB-aware operating systems such as DOS. The DVD/CD-RW drive is a standard ATAPI-type drive and compatible with OS/2 Warp recording software such as RSJ CD Writer. DVD playback is a bit of a problem due to the RIAA copy protections, but there are some folks working on that problem. (You'll need the Software Choice UDF file system to even attempt to play DVDs. UDF is included in OS/2 Warp 4.5x and eComStation already.) I've got a blank "filler" that goes into the Ultrabay when I want to travel without the diskette drive or DVD/CD-RW drive, to save weight, and that works great. It's an extra accessory you can order.

#### **USB:**

Not tested, but nothing unusual apparently. USB is listed as version 1.1. Works with the OS/2 Warp USB drivers.

#### **Ethernet:**

Mine has onboard Intel PRO/100 VE circuitry. This works fine with MPTS's Intel Pro/100 driver (or the downloadable one). The IBM ThinkPad web site has the downloadable one in a Windows-extractable package, so that wasn't too thoughtful, was it?

#### **Wireless (802.11b):**

My T30 has Cisco Aironet MP1350 for 802.11b wireless networking. I haven't set up this feature -- I'm not particularly fond of wireless networking given the security complexity. However, there's apparently a test driver floating around, so perhaps it will be supported before too long. I should have more to report on this in the future, and I think OS/2 VOICE has done some good reporting on wireless lately. Worst case you can use one of the relatively cheap 802.11b access point hardware devices to get your wireless fix, same as the Playstation and Xbox geeks do.

#### **Bluetooth:**

My model doesn't have this, so not tested.

### IBM Security Subsystem:

This is a special security chip embedded in the system. "The IBM Embedded Security Subsystem (TCPA compliant) provides for authentication and encryption of data communications." I've disabled it in the BIOS, but that doesn't matter. This is not supported under OS/2 Warp as far as I know, but I don't think this feature is going to be of interest to most OS/2 Warp users anyhow. And you can get T30 models without this chip if you are concerned about the potential abuses. For more on this you can see the previous article in this issue, Eric Baerwaldt's "[»TCPA« and »Palladium«](#) - another step towards immaturity or a step towards emancipation?" as well as the following links:

The official TCPA web site is: <http://www.trustedpc.org>

Here's an independent TCPA Frequently Asked Questions List: <http://www.cl.cam.ac.uk/~rja14/tcpa-faq.html>

The Electronic Frontier Foundation is at: <http://www.eff.org>

### ThinkLight:

Works fine -- activates/deactivates under OS/2 Warp. (This is a keyboard light activated by hitting **[Fn]-[PgUp]**. It shines a small light on the keyboard, so, if you aren't a touch typist, and you're on an overnight flight, you can still type. Now if someone could make a little filter to make the light shine a blue OS/2 Warp logo on the keyboard... :-))

### Serial port:

Nothing special, works fine with *COM.SYS* or *SIO.SYS*, as you prefer. Typically you'll disable the infrared to enable the serial port, or vice versa.

### Modem:

Built-in modem is an evil Lucent AMR modem, and apparently not even IBM can get technical information to write a driver. There's no driver for Linux, either. Use a standard non-WinModem in a PC Card slot. (My trusty Megahertz XJ5560 works just fine.) The PCMCIA modems generally provide better (faster) connections anyhow.

### Stickers:

Yes, this ThinkPad comes with an Intel Pentium 4 sticker, a Windows sticker, and a Windows license number sticker (on the underside of the unit). All three are easily removed. Take a warm damp cloth to eliminate any residue. eComStation stickers can then be applied. :-)

### Memory:

Expandable to 1 GB of RAM, as I mentioned. Unfortunately parity memory is a thing of the past, so none of those wonderful TRAP 0002 messages if you have bad memory. You'll just get "weird" behavior I guess. But you can turn on a full bootup memory check in the BIOS setup program. There's also PC Doctor (on bootable DOS diskette) available for free download from IBM, and that'll probe your system for hardware problems.

### BIOS Updates:

Available for download on bootable diskettes, making them operating system agnostic. (All downloadable diskette images, in fact, are as EXEs with "family mode" wrappers, meaning you can cut the diskettes natively under OS/2 Warp. Except the ethernet driver, strangely, although the MPTS one is fine.)

### WorkSpace On-Demand compatibility:

Yes. The system supports network boot, at least for ethernet, which is required for WorkSpace On-Demand. Also supports Wake On LAN and BIOS flash updates via LAN for you corporate types.

### Declared Support for OS/2 Warp:

Yes. The IBM ThinkPad T30 is the officially blessed OS/2 Warp system.

Verdict? This is a GORGEOUS eComStation or OS/2 Warp system, with very solid device support. Seems to be rock solid.

---

### References:

**IBM Thinkpad T30**

**Other links referenced:**

Thinkpad T30 - Software and Device Drivers -  
<http://www-1.ibm.com/support/docview.wss?rs=0&uid=psg1MIGR-42358>  
TP General - OS/2 Warp 4 updated installation diskettes - <http://www.pc.ibm.com/qtechinfo/YAST-3MARH8.html>  
Analog Devices ADI7 (SoundMax) Integrated Digital Audio Driver ver.3.1.1 (05/13/2002) -  
[http://hobbes.nmsu.edu/pub/os2/system/drivers/sound/ad188xos2\\_311.zip](http://hobbes.nmsu.edu/pub/os2/system/drivers/sound/ad188xos2_311.zip)  
DANIS506.ADD IDE replacement driver -  
<http://hobbes.nmsu.edu/cgi-bin/h-search?sh=1&button=Search&key=DANIS506>

# VOICE Newsletter - BackAgain/2000 Server Edition version 3.0 - /

## BackAgain/2000 Server Edition version 3.0 - A Review, Part 5

By [Walter Metcalf](#) © January 2003

Note: This article is based on an [earlier article](#) on the same topic written by the author for [About.com](#). However, the content has been substantially revised and updated.

### Introduction

After several months of looking at relatively straight-forward BackAgain/2000 operations, we are ready to examine an area where BackAgain/2000, especially the Server Edition, manifests some of its real power: backing up a complete LAN with one command.

1. **The Backup Cycle consists of a single Full Backup of the LAN plus a series of Differential Backups.**
  - a. Typically the Full Backup is run at night, once every two weeks to a month, depending on your needs and your tape inventory. It's important that all PC's be online to OS/2 when this is run so you need to either check the PC's yourself or appoint someone else to do it. Making signs asking people not to touch the machines during this time may help as well, especially if you have night-owls around.
  - b. The Differential Backup should be run nightly (or more often if required.) This can be run safely along with a minimal amount of network activity.
2. **Preparing a Set of Backup Media.**
  - a. Before beginning your backup cycle, you need to prepare a set of labelled tapes (or alternative media. See Figure 1 below for a summary of the wide variety of backup devices supported by BackAgain/2000 for OS/2). You need two sets (sometimes called father-son) at the very least. Personally I don't feel safe unless I have at least three sets (grandfather-father-son), and I'm much more comfortable with four.

### Supported Backup Devices

Floppy Drives	SCSI Hard Drives (local & remote)	Tape Drives (Travan, DAT, DLT, etc.)
Local ATAPI Hard Drives	USB Hard Drives (1.1 & 2.0)	Tape Changer Systems (aka libraries)**
Remote ATAPI Hard Drives	Writeable CDR Drives (CDR/W)*	CDR/W Changers (Jukeboxes)**
Jazz Drives	Zip drives	

### Notes:

1. Drives marked \* required either CDS's *IFS bundle* or [CD-Writer for OS/2](#) from [RSJ](#).
  2. Drives marked \*\* require the additional CDS product: [Back Again/2000 Autoloader Support Module](#)
- b. The number of tapes in each set will depend on how big and how many disk drives you have and on which tape technology you are using: e.g. TRAVAN, 8mm, DAT, etc.
1. A new technology has come onto the market recently--one with which you may want to experiment if you have a large disk file base to manage. I am referring to the Ultra-large IDE hard drives. Some of these monster-disks boast as much as 200 **gigabytes** with an 8 MB on line cache! These drives are available at a reasonable price.<sup>1</sup> (In addition some manufacturers are putting USB interfaces and external cases on them.) Such a drive holds far more data than any tape or collection of tapes within the budget of any SOHO user.
  2. It is also worth noting that the upcoming version of BackAgain/2000 for OS/2 v. 4 to be released in the spring of 2003 will no longer have the 2 GB maximum file limitation found in current versions of BackAgain/2000, making BackAgain/2000 v4.0 a perfect tool for backing up onto these huge drives.
- c. You should give some thought on where you want to store the Differential Backups. The setup described in this article appends them to the end of the Full Backup, continuing onto other tapes as necessary. This minimizes the number of tapes required. However some people prefer to keep the Full Backup on tape(s) by itself and keep the Differential Backups on a different set of tapes completely. Still another approach would be to put the full backups on CDR's, since CDR's have much more capacity than most tapes, and then put the differentials on tapes.

### 3. Starting the Backup Cycle

- a. Make sure all PC's on the network that you wish to back up are online to OS/2-eCS, are idle, and will be left idle for a sufficient time to complete the backup.
- b. Close all applications **except** any required to support your network, such as [InJoy Firewall](#).
- c. Make sure all PC's on the network have the shares defined for the drives you wish backed up and that they are on line. If you wish to verify which PC's are online you can type the following command from any OS/2 command prompt:

#### NET VIEW

This will return a list of all the computers the local PC can see. If one of the network computers you wish to back up is missing, try shutting it down, powering it off for a few seconds, turning it back on and restarting OS/2. If that fails, further investigation is required, and you may have to skip that PC for now.

**Trap:** The **Configuration | Preferences | Drives** option "Scan neighboring servers" is very useful--so much so that I always leave it checked. However if this option is selected and you want to backup a remote workstation R from your main system M, **do not** have M connected to any drives on R. Otherwise any selected drives will be backed up twice.

- d. Open the BackAgain/2000 folder and then open the Sets folder;
- e. Drag-and-drop the FULL\_LAN icon on top of the BackAgain/2000 program icon in the parent folder.
- f. When the main BackAgain/2000 Workstation window appears, click on "Start ".
- g. When the Change Volume window appears, insert the first volume of one of your tape sets in the drive.

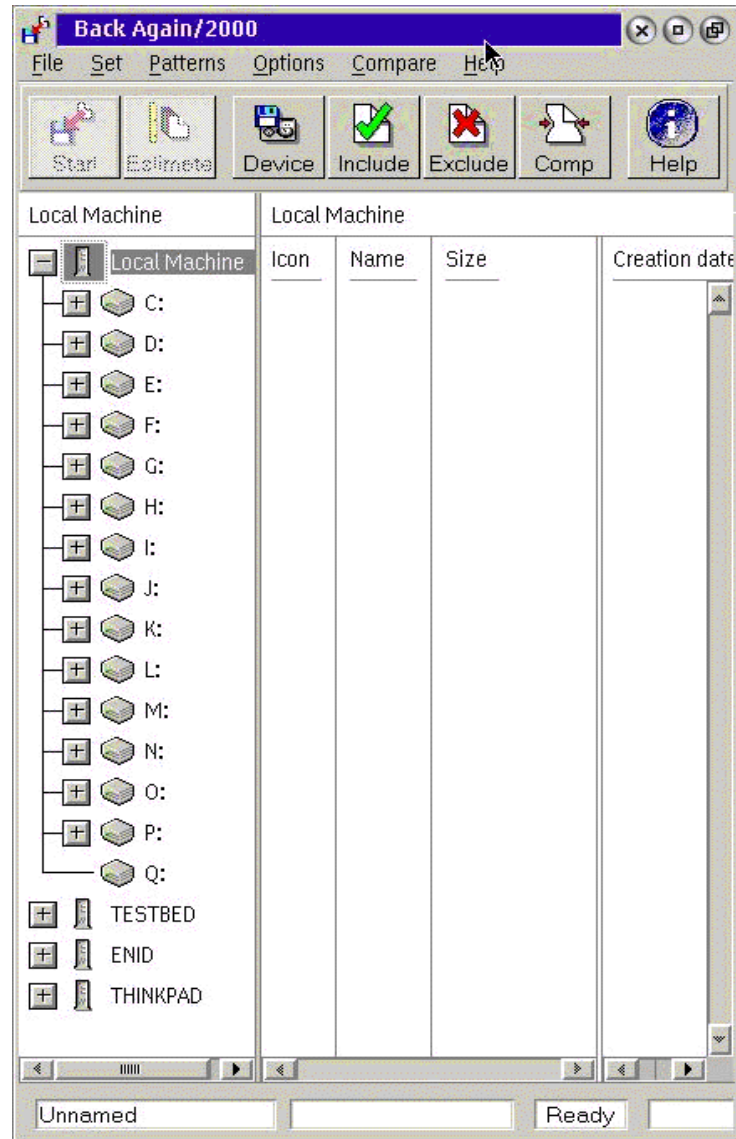


- h. Make sure the "erase media" box is checked, and click on "OK".
- i. The Backup will now start and run until all files on the Network have been backed up.

#### 4. Creating SET Files.

SET files are a crucial part of BackAgain/2000's operational philosophy, so it is appropriate to pause here and review how to create them.

- a. Start BackAgain/2000, and click on the Backup button. This will open the Main Backup window. After a short pause, a list of the PC's on your LAN will be displayed in the left window. The current machine will be expanded and all the drives will be listed. See the screenshot below:



**Figure 2.** (Click on image to expand to full size.)

- b. Wait until the list of PC's has appeared in the left column, and "Ready" has appeared in the third window of the status line at the bottom before proceeding further.
- c. To create the FULL\_LAN set, proceed as follows:
  1. Click on **Set | Device** from the Menu line, and then select the device to which you are backing up. If necessary, fill out the Path window using the Browse button. For more details on selecting alternate devices such as CDR's and hard drives, please [see](#) the second article in this series. Click on Cancel.
  2. Click on **Set | Compression** from the Menu, and choose the desired compression factor. Note: some tape drives have built-in hardware compression, and in such cases it may better

to set the BackAgain/2000 compression to: "Do not Use Compression". Eventually, trial and error is the only way to determine what works the best in your situation.

- **TIP:** It may be possible to temporarily disable hardware compression. My system uses a SONY SDT 9000 SCSI DAT drive, and on selecting the tape drive device, BackAgain/2000 displays a window containing a check box option identified as "Use hardware compression". This option is selected (ON) by default. I did some testing, and deselecting the option does make a huge difference in backup speed and time. Check your system to see if this option is available.

3. Click on **Set | Backup Type | Full** to request a full backup. See the chart below for the different types of backups and their characteristics:

#### Types of Tape Backups

Full All selected files are backed up.

files  
marked  
as  
backed  
up.

Copy All selected files are backed up;

does  
not  
mark  
files  
as  
backed  
up.

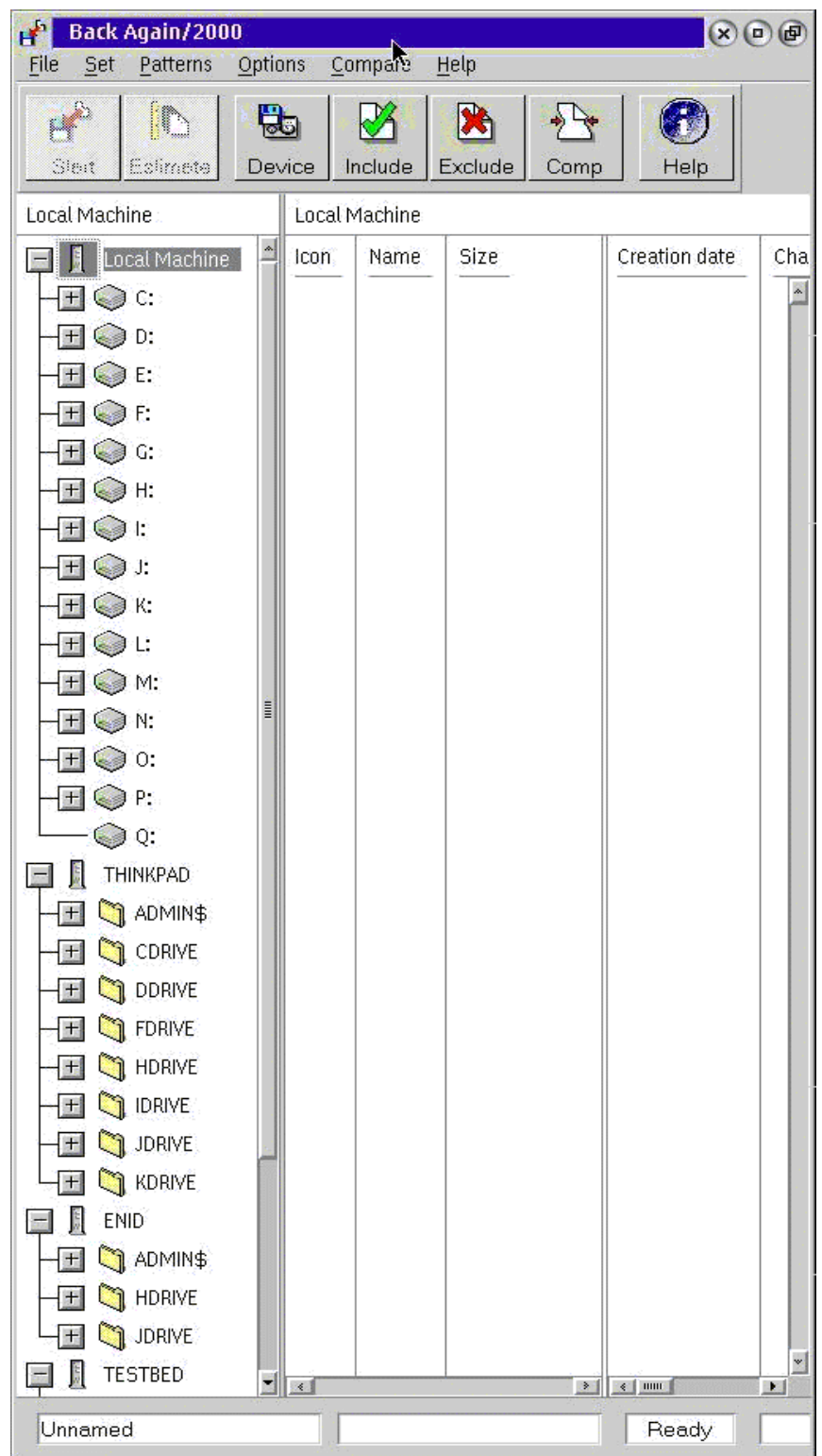
Difference Backs up only selected files that have changed  
since last full backup;

files  
not  
marked  
as  
backed  
up.

Incremental Backs up selected files that have changed  
since last full or incremental backup;

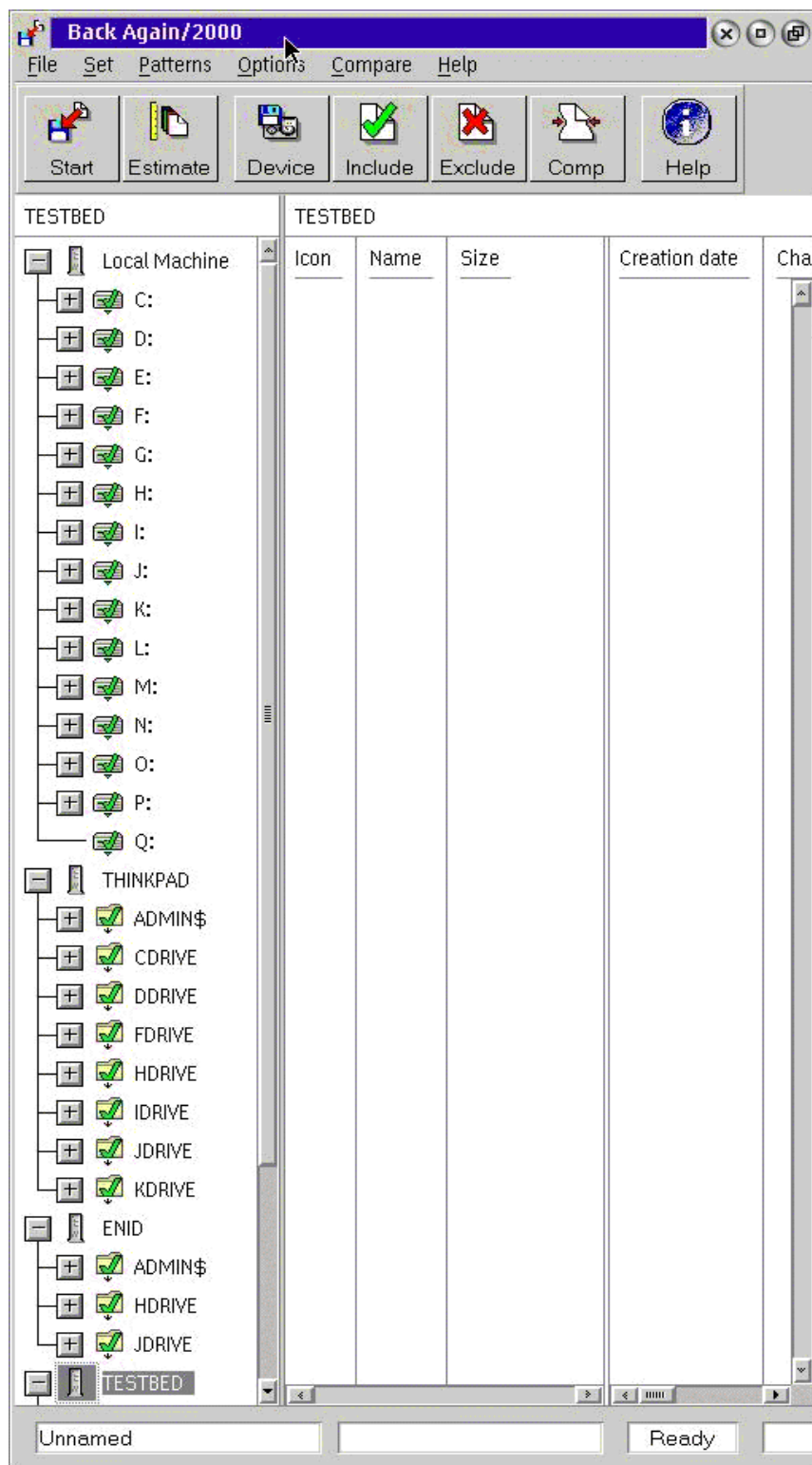
files  
marked  
as  
backed  
up.

4. Check the remaining Menu options to make sure they are set the way you want.
5. Finally, click on **File | Save As** from the Menu, and then enter FULL\_LAN.BST. (Note: the BST extension is not strictly required, but it is still recommended.)
6. Click on Save.
7. Now it is time to select the Devices and Files to be backed up. Before specifying Devices, you must expand all of the workstations. To do this, left-click on the plus sign (+) to the left of each PC in the Main Backup window. See Figure 2. The result will look something like this:



**Figure 4.** (Click on image to expand to full size.)

8. Now right click on the tower icons appearing beside each PC name (or the workstation name itself), and then select "Include all volumes" from the pop-up menu. This turns on recursion, and ensures that every file in every subdirectory on every device on that workstation will be backed up. You should see a green checkmark appear over each disk folder on the workstation.
9. Repeat the process for each workstation you wish to back up. When you are complete, the Main Backup screen should look something like this:



**Figure 5.** (Click on image to expand to full size.)

10. Now verify that the bottom left window of the status line still says "FULL\_LAN", and click on **File | Save** from the Menu.
- d. Creating a Differential Set file (DIFF\_LAN) is now very simple.
1. From the Main Backup window, click on **File | Open**. This brings up an OS/2 Combo box labelled "Open".
  2. From the combo box, select and load the file FULL\_LAN you created in the previous section.
  3. Wait until "Ready" appears in the third window of the status line.

4. Click on **Set | Backup Type | Differential** from the Menu.
5. Click on **File | Save as** from the Menu. This opens a OS/2 combo box called Save as.
6. Enter the filename DIFF\_LAN.BST in the appropriate window, and then click on "OK".

## 5. Running the Full Backup.

- a. Open the BackAgain/2000 folder, and then open the Sets folder. Drag-and-drop the FULL\_LAN icon on top of the BackAgain/2000 program icon in the parent folder.
- b. When the main BackAgain/2000 Workstation window appears, click on "Start".
- c. When the Change Volume window appears, make sure the "erase media" box is **NOT** checked, and click on "OK".
- d. The Backup will now start and run until all the specified files on the network have been backed up.

## 6. Running the Differential Backups.

- a. The differential backup can be run manually from the main system exactly like the Full Backup except that DIFF\_LAN is used instead of FULL\_LAN and "erase media" must be **unchecked** instead of checked. (The latter should already be set correctly from the Set file definition, but it is still a good idea to check.)
- b. Differential Backups, however, are usually scheduled by BackAgain/2000 and run automatically. There are at least two different ways to achieve this.

1. Using the BackAgain/2000 Schedule Folder.  
--This appears to be the "normal" method as expected by CDS, and certainly the cleanest and simplest one.

- a. Open SET's folder and open Scheduler Folder.
- b. Grab the right edge of the Scheduler Folder, and pull it far enough to reveal the "Change" button.
- c. Drag-and-drop a shadow of DIFF\_LAN icon into the Scheduler Folder.
- d. Click on the "Change" button.
- e. Click on the "Daily" radio button, and select the other options in that section according to the days you want to run the backups. Note that at least one day of the week or one short-cut button must be selected.
- f. Enter the time (24 hour clock) when you want the backup to run.
- g. Check that the BackAgain/2000 Scheduler program is running and that a shadow of that program is in the Startup folder.

2. Using BackAgain/2000's Internal Scheduler.

- a. Open the BackAgain/2000 folder, and start BackAgain/2000.
- b. Select **Configuration | Scheduler** from the Main Menu.
- c. Click on the "Add" button.
- d. Click on the "Browse" button.
- e. From the Open combo box, select DIFF\_LAN.BST.
- f. Select on "Run backup hidden" according to your preferences.
- g. Click on the "Daily" radio button, and select the other options in that section according to the days you want to run the backups. Note that at least one day of

the week or one short-cut button must be selected.

- h. Enter the time (24 hour clock) when you want the backup to run.
- i. Click on "OK".
- j. Click on "OK" to return to the BackAgain/2000 main screen.
- k. Select **File | Exit** to close BackAgain/2000.
- l. Note that you still need to have the BackAgain/2000 Scheduler program running and a shadow of that program is in the Startup folder.

3. Clearly I would prefer the former method because it is cleaner and simpler to set up. However, on my system at least, it is not completely reliable. Sometimes the backup will start on cue every day for months. Then, apparently for no reason it will just stop. Sometimes reinstalling BackAgain/2000 will get it going again. However it quit working a few months ago, and reinstalling did not reset the problem. So I am now using the internal scheduler. In my experience, that method has always been completely reliable throughout several versions of BackAgain/2000, even including BackAgain/2.

I realize this could easily be a phenomenon unique to my system, so I am simply presenting both methods to give you the benefit of my experience, and to give you a choice in case you run into a similar problem.

That concludes my tutorial on backing up your network, and my series on BackAgain/2000. If you have any questions, please [email](#) me, and I'll do my best to answer them.

**Walter F. Metcalf**

---

<sup>1</sup>At the time of writing, [Western Digital](#) has a 7200 rpm IDE hard drive with 200 GB and an 8 MB online cache for \$379.99 at their online store. Substantial discounts are available at most computer supply stores.

---

**Disclaimer:** All links in this article were checked at time of writing to ensure validity. However due to the nature of the Internet, some links may become invalid with the passage of time.

---

#### References:

##### **BackAgain/2000, version 3.0**

Developer: Computer Data Strategies, Inc.- <http://www.cds-inc.com/prodinfo/ba2kos2.html>

Price: **Workstation Edition:** \$99.00US, Electronic Delivery: \$ 95.00US Upgrade from v2.1: \$79.00US, Electronic Delivery \$75.00

**Server Edition:** \$199.00, Electronic Delivery: \$195.00

**Back Again/2000 Autoloader Support Module (ASM) for Back Again/2000 Server:** \$199.00, Electronic Delivery: \$195.00

The above prices were in effect at the time of writing. For more specific information please contact the developer.

##### **Other links referenced:**

Part 1 of this review - [http://www.os2voice.org/VNL/past\\_issues/VNL0402H/vnewsf5.htm](http://www.os2voice.org/VNL/past_issues/VNL0402H/vnewsf5.htm)

Part 2 of this review - [http://www.os2voice.org/VNL/past\\_issues/VNL0502H/vnewsf2.htm](http://www.os2voice.org/VNL/past_issues/VNL0502H/vnewsf2.htm)

Part 3 of this review - [http://www.os2voice.org/VNL/past\\_issues/VNL0702H/vnewsf2.htm](http://www.os2voice.org/VNL/past_issues/VNL0702H/vnewsf2.htm)

Part 4 of this review - [http://www.os2voice.org/VNL/past\\_issues/VNL0902H/vnewsf5.htm](http://www.os2voice.org/VNL/past_issues/VNL0902H/vnewsf5.htm)

RSJ CD-Writer for OS/2: <https://www.rsj.de/stage/en/order/orderos2.asp>

##### **Additional Reading:**

Article by this writer showing the importance of backing up.

Backup: Why and How? Part 1 - [http://www.wmetcalf.com/OS2\\_Treasury/Articles/1999/aa082599.html](http://www.wmetcalf.com/OS2_Treasury/Articles/1999/aa082599.html)

Backup: Why and How? Part 2 - [http://www.wmetcalf.com/OS2\\_Treasury/Articles/1999/aa090199.html](http://www.wmetcalf.com/OS2_Treasury/Articles/1999/aa090199.html)

Series by writer detailing procedure for backing up a LAN.

How to Back Up Your Network, Part 1 - [http://www.wmetcalf.com/OS2\\_Treasury/Articles/2000/aa072600a.html](http://www.wmetcalf.com/OS2_Treasury/Articles/2000/aa072600a.html)

How to Back Up Your Network, Part 2a - [http://www.wmetcalf.com/OS2\\_Treasury/Articles/2000/aa080200a.html](http://www.wmetcalf.com/OS2_Treasury/Articles/2000/aa080200a.html)

How to Back Up Your Network, Part 2b - [http://www.wmetcalf.com/OS2\\_Treasury/Articles/2000/aa080200b.html](http://www.wmetcalf.com/OS2_Treasury/Articles/2000/aa080200b.html)

How to Back Up Your Network, Part 3 - [http://www.wmetcalf.com/OS2\\_Treasury/Articles/2000/aa080900a.html](http://www.wmetcalf.com/OS2_Treasury/Articles/2000/aa080900a.html)

Excellent article by Hewlett-Packard outlining several backup strategies.

Developing a Backup Strategy -

[http://www.hp.com/cposupport/information\\_storage/support\\_doc/pg50113.html#P24\\_4051](http://www.hp.com/cposupport/information_storage/support_doc/pg50113.html#P24_4051)

---

---

Walter Metcalf has written many articles on the use and usefulness of OS/2 and eComStation. He was widely known as the Guide for the "About.com OS/2" site until its unfortunate plug pulling. Walter has served as President of VOICE and is currently the Co-ordinator of VOICE's Warp Doctor project <http://www.warpdoctor.org>. You can read more of Walter's articles in the archives of the VOICE Newsletter and many of his previous os2.about.com articles at his personal web site <http://www.wmetcalf.com>.

## VOICE Newsletter - OS/2 Tips.

### OS/2 Tips

We scan the Web, Usenet and the OS/2 mailing lists looking for these gems. Have you run across an interesting bit of information about OS/2 or eComStation recently? Please share it with all our readers. Send your tips to [tips@os2voice.org](mailto:tips@os2voice.org). If you are interested in joining a particular OS/2 mailing list, check out the VOICE Mailing List page for subscribing instructions for a large variety of existing lists - <http://www.os2voice.org/maillinglists.html>.

**Editor's note: these tips are from OS/2-eComStation users and in some cases can not be verified by myself. Please heed this as a warning that if you are not sure about something, don't do it.**

---

Nov 21, 2002 - Our first tip of the month is from Winfried Tilanus on comp.os.os2.apps. Have a problem installing PERL (<http://hobbes.nmsu.edu/cgi-bin/h-browse?dir=/pub/os2/dev/perl>) under OS/2?:

Oh, that \*\*\*\* o:\ thing! The O: drive is indeed hardcoded, but it is possible to overwrite it with the PERLLIB\_PREFIX environment variable. Only the syntax of that one is quite exotic and poorly documented. My config.sys says:

```
SET PERLLIB_PREFIX=o:/Perl/lib;f:\Perl\lib
```

Which means: "translate o:/Perl/lib to f:\Perl\lib"

No normal mind would think of that. Last time I cleaned up my config.sys, I thought (assuming all minds involved are normal): "I have no o:\ so I can remove that path". After that I spend hours on getting perl started again....

Winfried

---

Nov 27, 2002 - On the xworkplace-user Yahoo list, Andreas Ludwig offered the following tip on how to get to the XCenter properties if the XCenter (introduced with XWorkPlace as a replacement for Warpcenter) is filled with icons:

Come on. Try harder ;-) Just go to the very bottom of the screen (i.e. until the mouse pointer doesn't move anymore) and right click. This MUST work, otherwise there's really a strange bug in you XWPS installation.

---

Nov 30, 2002 - This is more of a none paid advertisement, then a tip, but a lot of people ask where to find 802.11b wireless cards that work with OS/2-eComStation, so here is a post from the ecomstation Yahoo list from Joachim Benjamins of Mensys:

[http://shop.mensys.nl/cgi-bin/db2www/mns\\_art2.d2w/report?catname=WirelessPCCard](http://shop.mensys.nl/cgi-bin/db2www/mns_art2.d2w/report?catname=WirelessPCCard)

Worldwide shipping for 12 Euro.

Regards,

Joachim Benjamins

---

Dec 3, 2002 - Next up an exchange of information about setting up helper applications under Mozilla for OS/2 in comp.os.os2.multimedia. Someone asked about making WarpVision a helper app for MPEG files under Mozilla:

William L. Hartzel

The "mime.types" file can have multiple extension per mime type: example: video/mpeg mpg mpeg mp2 mpe m2v m1v vbs mpegv The file "mailcap" does the association of mime type to application: example: video/x-mpeg2;D:\MA\warpvision\video2.exe

Be sure that the mime type you fix is the same mime type that you assign to applications, as the two above are not the same mime type. This would be the mailcap for the mime type above: video/mpeg;D:\MA\warpvision\video2.exe

Mikus Grinbergs

Not counting plugins (which have their own rules), the specification of "helper applications" (to which a downloaded file is passed by the browser) is IMHO \_\_much\_\_ easier via the 'mime.types'/'mailcap' facility in Mozilla/2 than via the "helper applications" panel in Mozilla's preferences.

All you have to do is add two lines to prefs.js, for instance: user\_pref("helpers.global\_mailcap\_file", "E:\etc\mailcap"); user\_pref("helpers.global\_mime\_types\_file", "E:\etc\mime.types"); and then put lines such as William indicated into those two files.

---

Dec 4, 2002 - There are several IRC clients for OS/2. You can get information on several at the VOICE Meeting page <http://www.os2voice.org/meetinginfo.html> One which is no longer supported is OpenChat/2. It is now freeware. On comp.os.os2.misc, Dink posted how to use this product even though you can no longer register it:

add

```
/REGISTRATION free ware,-726182663,389329788
```

to openchat.irc

---

Dec 5, 2002 - : I frequently see people asking about what SCSI RAID controllers work under OS/2. Here is a list compiled by Oliver Rick posted on ecomstation.support.hardware news group. Oliver is the maintainer of one of the best OS/2 Update information sites on the web - WarpUpdates International/Deutschland <http://www.warpupdates.mynetcologne.de/>:

This is what I know:

mfg	model	chip	bus	type	driver	arch
IBM	ServeRAID-4H ? Ultra160 SCSI Controller		PCI,	Ultra160, 64-bi Quad Channel, RAID	IPSRAID.ADD	<a href="#">IB04</a>
IBM	ServeRAID-4L ? Ultra160 SCSI Controller		PCI,	Ultra160, 64-bi RAID	IPSRAID.ADD	<a href="#">IB04</a>
IBM	ServeRAID-4L ?		PCI,	Ultra160,	IPSRAID.ADD	<a href="#">IB04</a>



	Ultra160 SCSI Controller		64-bi RAID 66 MHz			
IBM	ServeRAID-4M ? Ultra160 SCSI Controller		PCI, 64-bi RAID	Ultra160, Dual Channel, RAID	IPSRAID.ADD	<a href="#">IB04</a>
IBM	ServeRAID-4M ? Ultra160 SCSI Controller		PCI, 64-bi 66 MHz	Ultra160, Dual Channel, RAID	IPSRAID.ADD	<a href="#">IB04</a>
AMI (LSI Logic)	MegaRAID Enterprise 1600 (Series 471)	QLogic ISP12160A	PCI, 64-bi 66 MHz	Ultra160, Quad Channel, RAID	MRAID.ADD	<a href="#">AI02</a>
AMI (LSI Logic)	MegaRAID Express 500 (Series 475)	QLogic ISP10160A	PCI	Ultra160, RAID	MRAID.ADD	<a href="#">AI02</a>
AMI (LSI Logic)	MegaRAID Elite 1600 (Series 493)	QLogic ISP12160A	PCI, 64-bi 66 MHz	Ultra160, Dual Channel, RAID	MRAID.ADD	<a href="#">AI02</a>
Dell	PERC 3/DC (AMI Series 493)	QLogic ISP12160A	PCI, 64-bi 66 MHz	Ultra160, Dual Channel, RAID	MRAID.ADD	<a href="#">AI02</a>
Dell	PERC 3/DCL	QLogic ISP12160A	PCI, 64-bi 66 MHz	Ultra160, Dual Channel, RAID	MRAID.ADD	<a href="#">AI02</a>
Dell	PERC 3/QC (AMI Series 471)	QLogic ISP12160A	PCI, 64-bi 66 MHz	Ultra160, Quad Channel, RAID	MRAID.ADD	<a href="#">AI02</a>
Dell	PERC 3/SC (AMI Series 475)	QLogic ISP10160A	PCI	Ultra160, RAID	MRAID.ADD	<a href="#">AI02</a>
HP	NetRAID-1m ?		PCI	Ultra160, RAID	MRAID.ADD	<a href="#">AI02</a>
HP	NetRAID-2m ?		PCI	PCI;Ultra1 Dual Channel, RAID	MRAID.ADD	<a href="#">AI02</a>
HP	NetRAID-4m ?		PCI, 64-bi	Ultra160, Quad Channel, RAID	MRAID.ADD	<a href="#">AI02</a>
Compaq	Smart Array 431 Controller		PCI, 64-bi	Ultra160, RAID	CPQARRAY	<a href="#">CQ01</a>

AI02; <http://megaraid.lsillogic.com/support/dlcenter/os2-2e04-1.zip>  
CQ01; <ftp://ftp.compaq.com/pub/softpaq/sp19501-20000/sp19664.exe>

Dell used to have own drivers for the PERC models, but last time I checked the ftp server only had archives up to PERC 2 (probably shipped with hardware, no update yet?). Compaq might have a newer archive now.

---

Dec 6, 2002 - Digital cameras are all the rage these days. And most if not all of these save their images in JPEG format, with information stored inside the image. This is called EXIF data. The next version of PMView (3.0) will read and display this data, but generally under OS/2 there is no way to view or change this data. On comp.os.os2.multimedia, Jurgen Dittmer suggested the following to utilize this EXIF information under OS/2:

You may want to have a look for [renpic21.zip](#) on hobbes.

This smart little program reads the EXIF information, renames the file to its date and time and writes the EXIF info to extended attributes. It says, it works for Olympus cameras, I am using it with my Canon Ixus 300 and it works great!

---

Dec 15, 2002 - Frequently people ask where on a large IDE drive OS/2 can be installed. Older versions of Warp 4 had to be fully installed within the first 8GB of the drive as it required the system BIOS to see the partition. Bob Eager pointed out on comp.os.os2.misc that this is not the case with newer versions of OS/2:

Unless:

a) You are using any system based on LVM, and have made sure that LVM has updated the Master Boot Record

or

b) You have Warp 4 (non LVM) and have upgraded to FP13 or later, updated the MBR and boot sector (latter with SYSINSTX), then moved the partition above that line.

In both these cases, the limit is about 1TB.

---

Dec 16, 2002 - Further on the topic of partition location, Bob Eager continued on comp.os.os2.misc with the following bit about why Boot Manager is required for placing OS/2 above the 8 GB mark on a drive:

No.....the OS/2 MBR determines once and for all whether the INT 13H extensions (necessary to boot above 8GB) are present in the BIOS. Then it leaves a marker in memory. Boot Manager, and the individual volume boot records for OS/2, look for this marker to see how to proceed. Thus, if you don't use the OS/2 MBR the boot sequence for OS/2 won't work correctly. Other systems probably re-determine it at each stage.

---

Dec 16, 2002 - Here is a tip for users of ProNews/2 from Trevor Hemsley, on comp.os.os2.apps. If you post a long URL to Usenet and it wrapped and messed the thing up, take heed from Trevor, and do the following to prevent wrapping at least for those viewing it in ProNews/2:

You can just prefix the line with the > character and it'll turn off wrap for that line.

---

## VOICE Newsletter - Letters, errata, addendums.

### Letters, Addenda, Errata

Translation: [Christian Hennecke](#) If you have any comments regarding articles or tips in this or any previous issue of the VOICE Newsletter, please send them to [editor@os2voice.org](mailto:editor@os2voice.org). We are always interested in what our readers have to say.

---

Dec 18, 2002 - Our only letter of the month is from Dan Kehn in regard to an article by Isaac Leung on Dan's [ExCal PIM program](#) in the January 2002 issue of the newsletter:

I was scanning for references to ExCal as part of my yearly resume update and found your article. Thanks for the kind words, it has been many years since I've looked at ExCal. It was a fun little program and I'm very glad that others find it useful. You are correct, it was created to demonstrate the power of the WPS and OO UI design (off the record, it was supposed to be part of a user design guideline that unfortunately was never published).

I would like to comment on some of your "gripes".

**"The left Calendar Pane shows the current month and is hardly configurable at all! The week starts on Sunday (some people around the world start the week on Monday), and weekends are denoted with a blue background. None of the colours or fonts can be changed except for the main background. The monthly view is not too bad for me, but it would've been nice to be able to**

change it to weekly or yearly view as well for those that want it."

I admit that my memory is rather fuzzy on details, but I specifically recall that ExCal does handle weeks starting on Monday, Sunday, or Saturday. By default, it uses the same algorithm based on country codes as the operating system (at the time I worked on the WPS, so I copied the code directly from OS/2). I got quite a bit of heat before adding the NL capabilities (start of week, province / state, multi-line fields for addresses/phone numbers, etc), so I'm quite certain ExCal handles this. Searching the net, it does seem that you have the most recent version (3.0 m) and that sounds about right by my memory. I'm a bit vague on this one, but I recall that you can set the background of the weekends by dropping a color while holding the Alt key ( no joke). I can't say for certain if that is in the online documentation.

I regret that I cannot test this directly, as I no longer have an OS/2 machine handy (and I've even lost the source in an unfortunate mishap with my docking station). Nonetheless, I hope this corrections are accurate and thank you again for your kind review.

Regards, Dan

---

# VOICE Newsletter - Guidelines for Article Submissions to the VOI

## Guidelines for Submissions to the VOICE Newsletter

Last Updated June 18, 2001

First and foremost, please do not hesitate to ask if you have questions regarding these submission guidelines. We would rather work with you to ensure quality than to turn you away by being either too vague or too specific.

Here's how it works: You write an article and send it to [editor@os2voice.org](mailto:editor@os2voice.org). If it consists of more than one file, please pack them with Info-ZIP. Please be sure your article is a HTML file, plain ASCII text file, or any format viewable by Describe, Lotus WordPro or StarOffice, which accounts for just about everything other than IBM Works, Papyrus and Clearlook formats. We do prefer HTML though.

There is no requirement as to length, since this newsletter is only in HTML and INF format. It can be as long or as brief as necessary, so be thorough in your descriptions and commentaries. However, please remember that you are not writing your master thesis, so you don't have to begin at the very beginning à la "And first the earth cooled...". The reader will get bored very soon if you begin the review of a word processor with a nicely worked-out history of word processing software.

Your article will then be reviewed and run through a spell checker (something that you should also have done **before** sending the article). If there are any non-spelling changes we think should be made, we will let you know and we can discuss them. We do not make any major changes without input and approval from the author. We will work on it with you to get it in shape. We are not professional editors, but we believe we have done some decent work on the newsletter.

As to professionalism of writing, please refrain from vulgar and abusive language, illegal subject matter, and slander/libel. Our aim is to encourage readership and author participation by presenting a tasteful, yet useful medium for OS/2 related information.

Therefor VOICE reserves the right to reject any submitted article for any reason.

## Topics

If you are not sure, whether your idea for an article is suitable for the Newsletter, have a look at the following list of general kinds of articles:

- Reviews of hard- and software including naming and evaluation of facts regarding installation, features, stability, and support.
- Comparative reviews of hard- und software products of the same kind, e.g. graphics adapters or office suits, including comparisons of properties like e.g. finish, installation, features, stability, and support. Teaming up with one or more other authors is advised due to the huge workload.
- In-depth guides covering installation, configuration and optimization of complex or hard to use products (so-called HowTos), e.g. OS/2 itself, Emacs, or TeX.
- Essays and comments regarding things that are going on in the world of (OS/2) computing. For some nice examples see OS/2 Headquarters (<http://www.os2hq.com>).
- Presentations of OS/2-related projects and web sites like Odin, Netlabs, or OS2.org.
- Tips & tricks

- Introductions to programming in certain languages like, for instance, ADA95 or Python, or to special parts of programming with an eye on OS/2 specifics, e.g. PM/WPS or multimedia programming. (You may want to submit those to [EDM/2](#) though.)
- Collections of information resources regarding a specific topic.

Here are some concrete suggestions for topics that we think are of particular interest:

## Reviews

- Astronomy: Nightvision, PmAs, XEphem for XFree86/OS2
- Office: LyX for XFree86/OS2 (a LaTeX GUI), Mesa 2, Papyrus 9, Relish
- Filemanagers: A big comparative review of e.g. F, FC/2, FileStar/2, EF Commander, Coonect/2 etc., as well as a single review of e.g. the free [F](#).
- Databases: Comparative and single reviews of Approach, DB2, DBExpert, MySQL, PostgreSQL, Thinktool
- Editors: Comparative and single reviews of Emacs, Enhanced EE, EPM, FED, FTE, MED
- E-mail clients: Comparative review of MR/2 ICE, PMMail, Polarbar Mailer, Emerald Mail, Gnus/Emacs, Pine, Snee/Vsoup, Yarn/Vsoup. Also single reviews of the less known packages are very welcome.
- Development: Free Pascal, GNAT, Virtual Pascal
- Graphics/DTP: DrawIt!, Embellish, Gnuplot, GMT, Maul, Photo>Graphics, PhotoTiger, PMView 2000
- FTP clients: Comparative/single reviews of NcFTP, NFTP, emtec FTP, F, Handy FTP
- Newsreaders for OS/2: both comparative and single reviews of both PM and text mode applications. A few candidates: ProNews/2, Gnus/Emacs (w/ Changi?), Slrn/Slrnpull/Changi, Yarn/Vsoup/Souper. Especially Gnus is worth a single review.
- Multimedia: OS/2's weak point so every package could be interesting. E.g. MP3 players like PM123 or z!.
- Networking/Internet: Links browser, Mozilla, FTP servers (Hethmon Brothers, Peter Moylan), mail servers (Hethmon, IPS, Weasel, ZxMail), HTTP servers (Apache, IPS, SRE, Xitami, Web/2)
- Games: Crown of Might, Lincity for XFree86/OS2, Shisen/2, Stellar Frontier, emulators like VICE/2 etc.
- Tools: Ghostscript 7/GSView, Junk Spy 2

## HowTos

- Creating PDFs on OS/2 (using Ghostscript 7 and GSView or PMPDF, as well as VTeX/Free)
- Extending EPM with macros
- Reading news and mail with Gnus/Emacs
- Reading news with Slrn and slrnpull or Changi
- Reading news and mail with Snee and Vsoup
- Reading news and mail with Yarn and Vsoup or Souper
- No-cost IDE with gcc and Emacs
- Photo>Graphics workshop
- PM programming with ADA95 (GNAT)

## Other

- Interviews with people from the OS/2 world (developers, event organizers, etc.), e.g. Kendall Bennett, Daniela Engert, Jason A. Gow, Adrian Gschwend, Kim Haverblad, Mike Kaply, Henk Kelder, Christian Langanke, Andreas Linde, Sander van Leeuwen, Ulrich Möller

## Content and structure

The following should give you a rough idea of what to include in your article:

1. **Your Byline:** Include your name, email and a web site if you'd like. You can also give a brief plug for yourself/your business if you want but that would be tacked on to the bottom of the page.
2. **Resources:** Please list URLs of web sites you refer to or titles of books you have taken information from.
3. **Graphics** can help a lot with explaining how things work, but try to keep them to 256 colors or less (this is a

requirement of the INF version), and the smaller the file size the better, as some people download the Newsletter to read off-line. Depending on the size you may want to consider using thumbnails in the text. Please add descriptions, e.g. "Fig.1: LAN interface setup dialog". Images can be in just about any format, but we prefer PNG, JPG, or GIF (use a package like PMView that has a valid licence for the LZW compression). Remember to put in your document where you want the images to go if you don't use HTML format.

If your article is a review, it generally should cover the following additional information, but don't feel locked into this:

1. **Additionally:** List any URLs for getting information about the device and any software used specifically with it, if any. Also give the manufacturer's suggested retail price and/or a general price range for it and possibly the vendor or vendors where it can be purchased.
2. **Initial Impressions:** Why did you choose this particular package? How did you go about deciding on it? What alternatives did you consider? What were your initial impressions about it when you took it out of the box?
3. **Setup/Installation:** Was it complete out of the box (or zip file), or did you have to purchase or find additional items like cables and drivers (this mostly applies to hardware)? Did you have to read the manual? Was there a manual, if so how good/helpful was it? Did you still have to boot to plain DOS or heaven forbid Windows9x to run any kind of setup or calibration software? What hardware are you using it with (major PC specs if applicable, ie CPU, RAM, HD) and what version of OS/2? Any minimum hardware/software requirements for this application? What kind of Support is provided? Did you have reason to ask for help, if so how was the response? Normally, installation itself shouldn't be talked about that much, since a well-working one is expected from every product. But if you had problems or you think that certain things have been solved in a very intelligent way, **do** comment on that.
4. **How Does it Work:** Give some details on how you use the application. No need to get into every detail, just the basics is fine. Many people seem to be tempted to write something like a user's guide in this case. If you are just reviewing a product, don't write about which menu you have to select to invoke a feature. Better tell the reader how good that feature works. Graphic's are nice and help a lot in showing how a product works,
5. **Conclusion/Final Thoughts:** Are you satisfied with this product? Can you give a comparison to any similar product as far as quality and general usability? Would you make the same decision again? What do you see as it's strong and weak points? Did you have to contact the manufacturer or vendor for support? If so was it any good?

### Formatting

Formatting the text in certain ways can increase readability a lot. Please ensure that your article conforms to the following to keep the Newsletter's interface consistent.

- If you would like to make use of tables, keep them simple: Please don't include images in tables and avoid nested tables, since both kinds are not supported by IPF and make generating the INF version of the Newsletter very complicated. Usage of colors is acceptable though.
- Things you want to emphasize should be **bold**, not in italics or in uppercase.
- Please write names of objects, like the font palette, and options in dialogs in *italics* , as well as values that are to be entered in dialogs.
- Filenames, paths and source code should be monospaced (<tt> and <pre> tags).
- Anything that should be entered at the command line should be monospaced and in the font color **green**. You may also want to put these into a seperate line.
- Mark warnings in **red** color, preferably like this:  
**CAUTION:** Never use this feature to...
- Keys should be marked as monospaced and with smaller-than/greater-than characters around them, e.g. <CTRL-ALT-DEL>.
- All URLs should be listed fully readable in the seperate references section, e.g. as <http://hobbes.nmsu.edu> and not **Hobbes**. The latter method is preferred inside the article's body.
- Please do not use any specific font faces! Some editors seem to do this by default.
- Ensure that your HTML editor doesn't use absolute local links like C:\VOICE\vnwsf3.htm.

Again, if you have any questions regarding the submission itself or how to write an article, feel free to ask.

Thank you,

The VOICE Editors.

---

## VOICE Newsletter - What is VOICE?

**What is VOICE?**

VOICE is a nonprofit, virtual user group, devoted to the education and marketing of the OS/2 operating system. VOICE was formed by a small group of OS/2 users who felt they could do something to advance knowledge of the OS/2 operating system, and is comprised of other OS/2 users who feel that something needed to be done with getting OS/2 more widely recognized.

VOICE is not affiliated with International Business Machines (IBM).

#### **\*Mission Statement\***

Representing OS/2 to I.B.M. and the industry, as well as marketing OS/2 to users and professionals worldwide.

#### **\*VOICE Objectives\***

1. Serve as a "virtual", on-line user group for OS/2 users, without a local user group, and to any other OS/2 users interested in VOICE.
2. Promote OS/2 to the SOHO [small office/home office] consumer and to general computer users.
3. Provide an effective communication channel between members, user groups, ISV's [independent software vendors], and IBM.
4. To help OS/2 User Groups organize and promote their activities.

#### **\*Virtual Meetings\***

Weekly IRC [Internet Relay Chat] meetings are held on WEBBnet in the channel #VOICE. Meetings are now held on the first and third Monday of each month at 20:00 EST (01:00 GMT).

For a list of current WEBBnet IRC servers please refer to <http://www.suntrix.com/ibbs/server.html>

If you're unfamiliar with IRC, visit [IRC Clients \(http://www.gt-online.com/~bri\)](http://www.gt-online.com/~bri). There is a list of available IRC clients, with descriptions, and a link to a chart that compares features of each. If you need further assistance e-mail [Judy McDermott \(mailto:judy@moon-scape.com\)](mailto:judy@moon-scape.com).

## VOICE Newsletter - VOICE Officers

### **Officers and Staff**

There are Six Officers presiding over VOICE affairs. They are common OS/2 users, voted into office by the membership of VOICE, and act solely to carry the VOICE of our members to the rest of the world. They are:

Position	Name	e-mail
VOICE Board of Directors		
President	-	-
Vice-president	Wayne Swanson	<a href="mailto:swanee@pillarsoft.net">swanee@pillarsoft.net</a>
Treasurer	Peter Lazenby	<a href="mailto:plazenby@yellowhead16.net">plazenby@yellowhead16.net</a>
Secretary	Andrew Welty	<a href="mailto:secretary@os2voice.org">secretary@os2voice.org</a> <a href="mailto:andreww@aaip.net">andreww@aaip.net</a>
Marketing	-	-
Liaison Officer	-	-

Assisting the  
VOICE Board

System Administrator Abel McClendon [sysadmin@os2voice.org](mailto:sysadmin@os2voice.org)

Web Master Jeremy Workman [rs@fyrelizard.com](mailto:rs@fyrelizard.com)

Editor Mark Dodel [editor@os2voice.org](mailto:editor@os2voice.org)

Associate Editor Robert Shallenberg [bobshall@sd.znet.com](mailto:bobshall@sd.znet.com)

Associate Editor Julian Dominic [jdb@juliand.com](mailto:jdb@juliand.com)

Associate Editor Jim Gorman [jcgorma@attglobal.net](mailto:jcgorma@attglobal.net)

News Editor Andrew Welty [vnews@os2voice.org](mailto:vnews@os2voice.org)

German issue  
of the VOICE  
Newsletter

Editor Christian Hennecke [christian.hennecke@os2voice.org](mailto:christian.hennecke@os2voice.org)

Translator/Editor Philhard Ackermann [os2fan@gmx.net](mailto:os2fan@gmx.net)

Translator/Editor Manfred Agne [manfred.agne@munich.netsurf.de](mailto:manfred.agne@munich.netsurf.de)

Translator/Editor Bärbel Hennecke [christian.hennecke@os2voice.org](mailto:christian.hennecke@os2voice.org)

REXX Interface Martin Kiewitz [kiewitz@netlabs.org](mailto:kiewitz@netlabs.org)

Translator/Editor Thomas Klein [thklein@netcologne.de](mailto:thklein@netcologne.de)

Translator/Editor Karl Reinberg [carlos@t-online.de](mailto:carlos@t-online.de)

-----

## VOICE Newsletter - VOICE Membership

### Membership Information

To become a member of VOICE, you must agree to abide by the bylaws and code of ethics of VOICE, and send in a check or money order to cover the dues for a one year membership. The dues are listed below.

---

#### 1 Year Membership Dues for VOICE

Student Membership..... \$10.00

Individual Membership..... \$25.00

Corporate Membership..... \$100.00

All monies must be in United States Currency. Make out your check or money order to:

VOICE

60 Starling Street

Kitimat BC V8C 1K5

Canada

Secure credit card payment for VOICE membership and sponsorship is now available through BMT Micro.  
<http://www.bmtmicro.com/BMTCatalog/os2/voicememberships.html> and through Mensys at  
[https://shop.mensys.nl/cgi-bin/db2www/mns\\_art2.d2w/report?artname=VOICESUB](https://shop.mensys.nl/cgi-bin/db2www/mns_art2.d2w/report?artname=VOICESUB).

Please review the VOICE [Bylaws](#) and [Code of Ethics](#) and then fill out the [membership application form](#) and enclose it with your membership dues.

---

# VOICE Newsletter - VOICE Bylaws

## Bylaws

### VirtualOS/2 International Consumer Education (VOICE)

ENACTED APRIL 2, 1997

REVISED APRIL 30, 1999

#### ARTICLE I NAME

- **Section A**  
The name of this organization shall be the "Virtual OS/2 International Consumer Education," hereinafter called VOICE. OS/2 is defined as a computer operating system marketed by IBM. ISV is defined as Independent Software Vendor. SOHO is defined as Small Office/Home Office. OS/2 and IBM are the registered trademarks of the International Business Machines Corporation.

#### ARTICLE II PURPOSE

- **Section A**  
**Mission Statement:**  
Provide ongoing support, information and education to the OS/2 community.
1. **Section B**  
**The objectives of VOICE shall be:**
  2. To serve as a "virtual" not-for-profit, on-line OS/2 user group with membership open to anyone interested in using the OS/2 operating system.  
To support OS/2 to the SOHO/Home markets, and encourage the use of OS/2 by those users interested in alternatives.
  3. To provide an effective communications channel between members, User Groups, ISVs, and IBM.
  4. To assist OS/2 related User Groups organize and promote their activities and projects.
1. **Section C**  
**Achievement of the objectives of VOICE shall be accomplished by:**
  2. Planning and conducting regular meetings of VOICE.
  3. Developing and maintaining a web site to facilitate the exchange of ideas and foster communication between members. The web site will also serve as a central collection point of OS/2 related information for use by both new and experienced OS/2 users.
    - a. Use of such the above web site and any other electronic service is made available to the Internet community on a strictly voluntary basis and at their own risk. VOICE and the Executive Board will not be responsible for any direct, indirect, incidental, special or consequential damages including, for example, loss of profits resulting from the use of the web site service or software obtained from the service, even if VOICE has been advised of the possibility of damages.
  4. Promoting VOICE and OS/2 through various means, such as on-line and off-line advertising and voluntary participation in OS/2 promotional activities (i.e. seminars, demonstrations, etc).
  5. Working with existing OS/2 support structures, such as existing web sites and newsletters, to improve communication and form a cohesive relationship between all OS/2 users, ISVs, User Groups, and IBM.
    - a. Contacting ISVs directly to keep abreast of OS/2 news and development in addition to providing feedback on ISV products.
    - b. Contacting OS/2 user groups to keep them informed about OS/2 related news and events.
  6. Developing and maintaining a list of VOICE members.
  7. Developing and maintaining a reference library of VOICE related documentation (i.e., minutes of meetings, committee reports, membership lists, etc).

#### ARTICLE III MEMBERSHIP

1. **Section A**  
**Classes of Membership:**



2. There will be several classes of membership: Corporate membership, Individual membership, and Student membership.
  3. Each Corporate member is entitled to five (5) votes.
  4. Each Individual member is entitled to one (1) vote.
  5. Each Student member is entitled to one (1) vote.
- 
1. **Section B  
Qualification:**
  2. A membership may be held by any company, organization, or individual with an interest in OS/2.
  3. Qualification for membership shall be automatic unless the Executive Board believes this membership would not be in the best interests of VOICE.
- 
1. **Section C  
Application:**
  2. Application for membership may be made using the [Online Membership Form](#).
  3. Membership dues may be paid either by using the [Online Membership Order Form](#) at BMT Micro or by check (cheque) or Money Order (US Funds) made payable to VOICE and mailed to the Treasurer of VOICE at the address listed.
  4. The application for Corporate Membership shall designate an individual to serve as that corporation's voting delegate. The member corporation may designate its delegate at any time by written notice to the Secretary.
  5. The Executive Board shall promptly act to accept or reject an application for membership and will inform the applicant of its decision as soon as possible.
- 
1. **Section D  
Fees:**
  2. An annual membership fee will be established by the Executive Board to cover the operating expenses of VOICE and OS/2 projects on behalf of VOICE including but not limited to representation at and participation in the annual Warpstock conference.
- 
1. **Section E  
Termination of Membership:**
  2. Membership terminates when qualification for membership ceases to exist.
  3. A membership may be terminated by notification in writing to the Secretary from the corporate delegate of a Corporate membership, or an individual for an Individual or Student membership.
  4. Membership of a Corporate, Individual, or Student membership may be terminated by the Executive Board at any time if the Board rules that the member is not acting in the best interests of VOICE, as defined by this document and the Code of Ethics.
  5. Membership shall expire after 12 months from the date the application was submitted, unless the member's annual fee is received by the Treasurer prior to that date.
  6. The Treasurer will notify the member, by e-mail, 30 days prior to the member's expiration date that the membership will expire in 30 days. The member will then have 30 days to renew the membership via either the Website at BMT Micro or in writing, with check (cheque) or Money Order enclosed to the Treasurer of VOICE.

## **ARTICLE IV GOVERNMENT**

- **Section A  
Executive Board of Directors:**
  1. Executive Board - The government of VOICE shall be vested in the Executive Board, which shall consist of six members.
  2. Executive Board Officers - The executive officers shall be: President, Vice-President, Secretary, Treasurer, Liaison Chairperson and Marketing/PR Chairperson.
  3. The tenure of an officer or Executive Board member shall terminate if the incumbent becomes ineligible to hold office.
  4. New positions may be added to the Executive Board when deemed necessary by a majority rule of the Board.
  5. A majority rule of the Board can result in the removal of an officer from his/her position if the Board rules

that the officer is not fulfilling his/her duties or is not abiding to the by-laws of this document as well as the Code of Ethics.

1. **Section B**  
**The President shall:**

2. Be the principal executive officer.
3. Participate as an executive officer of the Executive Board of VOICE.
4. Provide for committees as described in Article VII.
5. Preside over all formal meetings and Executive Board meetings of VOICE.
6. Be ex officio a member of all committees.
7. Provide for the discharge, pro tempore, of necessary functions in the event of the absence or incapacity of a member.
8. Call all Executive Board meetings.

1. **Section C**  
**The Vice-President shall:**

2. Participate as an executive officer of the Executive Board of VOICE.
3. Be of official service to the President.
4. Perform the duties, pro tempore, of the President in case of Presidential absence.
5. Act as Chairman of the Program Committee.

1. **Section D**  
**The Secretary shall:**

2. Participate as an executive officer of the Executive Board of VOICE.
3. Publish and maintain the minutes of Executive Board meetings.
4. Be responsible for all official publications of VOICE, except those published by the Marketing Chairperson.
5. In conjunction with the Liaison Chairperson and Marketing Chairperson, form and maintain a healthy relationship with User Groups, ISVs, and IBM.
6. In addition to the Liaison Chairperson, be responsible for all official correspondence with ISVs, User Groups, IBM, and any other organization.

1. **Section E**  
**The Treasurer shall:**

2. Participate as an executive officer of the Executive Board of VOICE.
3. Be responsible for all monies of VOICE.
4. Maintain all accounts and handle all financial transactions of VOICE and prepare and issue to each member an annual financial statement.
5. Maintain the membership roster.
6. Prepare and maintain an operating budget by fiscal year for VOICE. An approval of the budget by the Executive Board is required.
7. Arrange for an annual audit of the financial accounts of VOICE. An Audit Committee consisting of at least three (3) members of VOICE will be appointed by the President. Said committee will review their findings with the Executive Board for approval.
8. Collect all fees pertaining to membership. The Treasurer may appoint a member to collect fees in the event of his/her absence.

1. **Section F**  
**The Liaison Chairperson shall:**

2. Participate as an executive officer of the Executive Board of VOICE.
3. In conjunction with the Secretary and Marketing Chairperson, form and maintain a healthy relationship with User Groups, ISVs, the press, and IBM.

4. Maintain a list of User Group, ISV, press, and IBM contacts and be the contact point for Executive Board or members wishing to reach User Groups, ISVs, the press, and IBM.
  5. In addition to the Secretary, be responsible for all official correspondence with ISVs, User Groups, IBM, and any other organization.
1. **Section G**  
**The Marketing/PR Chairperson shall:**
  2. Participate as executive officers of the Executive Board of VOICE.
  3. Be responsible for the marketing and public relations of VOICE with, but not limited to, User Groups, ISVs, the press, and IBM.
  4. Issue press releases, as necessary, for VOICE, ISV, and User Group news and events.
  5. Write articles for both on-line and paper magazines promoting VOICE news and events.
  6. In conjunction with the Secretary and Marketing Chairperson, form and maintain a healthy relationship with User Groups, ISVs, the press, and IBM.
  7. Inform and provide the Secretary with copies of any official publications and press releases written and distributed by the Marketing Chairperson.
- **Section H**  
**Scope of Duties:**  
The duties of the Executive Board and the officers shall include but not be restricted to those named in this article.

## **ARTICLE V**

### **Nomination, Election and Length of Term**

1. **Section A**
  2. The Nominating Committee shall present a slate of candidates for each office at the last scheduled public meeting of VOICE. This committee will be chaired either by the Past President or a delegate member appointed by the President.
  3. Additional nominations may be appended to the slate of officers upon receipt by the Nominating Committee, before the close of the meeting, of a petition signed by five (5) delegate members. No delegate may sign more than one petition for the same office.
  4. Elections shall be conducted by e-mail, to the current membership list, commencing immediately following the Board of Directors meeting where all candidates for open positions have attended and supplied a short Bio for posting on the VOICE Website.
  5. Ballot will be by e-mail to the current Secretary. Ballots will be accepted for 10 days following the initial e-mail to the membership list. No ballots will be accepted after the 10 days has lapsed. Winners will be notified within 24 hours of the close of balloting, and will be posted to the VOICE Website immediately thereafter.
  6. A candidate is elected upon receiving a majority of the votes for the office. Should the first ballot fail to produce a majority vote for any office(s), a run-off shall be held between the two candidates receiving the highest and second highest number of votes cast for the office(s).
  7. The procedure for electing the remaining members of the Executive Board shall be as follows. Each delegate member may vote for as many candidates as there are vacancies to be filled. Those candidates, equal in number to the actual number of vacancies to be filled, receiving the highest number of votes shall be declared elected to the Executive Board. In the case of a tie which results in a conflict, a run-off between the tied candidates shall be held to fill the vacancies remaining.
  8. Elected officers and Board members shall assume their duties upon adjournment of that meeting.
1. **Section B**  
**Vacancies:**
  2. In the event the office of President becomes vacant, the Vice President shall succeed to the Presidency.
  3. When any other office becomes vacant, the Executive Board shall act to fill the office for the unexpired term. They shall use such procedures for this as they deem advisable under the circumstances, including if they wish, the holding of a special election.
1. **Section C**  
**Eligibility:**
  2. Only member delegates are eligible to be Executive Board members.
  3. No restriction shall be placed on the number of times a person may be re-elected to office.

4. No nomination shall be accepted unless the nominee has given assurance of willingness to fulfill the responsibilities and duties of the office for which he is nominated.
  5. Employees and relatives of IBM and its subsidiaries are ineligible to serve as officers or members of the Executive Board. However, IBM can appoint an official non-voting representative(s) to act as vendor liaison at Executive Board meetings and committee meetings.
1. **Section D  
Duties of Officers:**  
The Executive Board shall:
    2. Establish official policy for VOICE. This includes a Code of Ethics and standard practices to be observed at all VOICE functions.
    3. Monitor and supervise all VOICE related activities.
    4. Establish fees for membership.
    5. Sanction special projects related to VOICE.
    6. Control the distribution of VOICE membership roster to parties internal and external to VOICE.
  1. **Section E  
Length of Term**
    2. The term of the Executive Board members shall be 2 years.
    3. Elections will be staggered so as to not have a turnover of the entire Executive Board at the same time.
    4. Elections held in even numbered years shall be for:
      - a. President
      - b. Marketing Chairperson
      - c. Treasurer
    5. Elections held in odd numbered years shall be for:
      - a. Vice President
      - b. Secretary
      - c. Liaison Chairperson
- ARTICLE VI  
MEETINGS**
- **Section A Definitions for Meetings of VOICE:**
    1. A formal meeting is an event composed of one or more scheduled sessions for the general membership of VOICE. The sessions may be concurrent and/or contiguous for each day of the meeting. A formal meeting is completed when adjourned 'sine die.'
    2. The Executive Board will conduct separate meetings to conduct the business of VOICE. Board meetings will be open to all members.
    3. Committees will conduct separate meetings to discuss pertinent topics of interest. Committee meetings will be open to all members.
  - 1. **Section B  
Schedules:**
    2. Formal meetings will be conducted at least twice a month. Locations for these meetings shall be selected by the Executive Board based on the recommendations of the Program Committee.
    3. Executive Board meetings will be conducted at least two times a month. The President shall select the meeting location and time.
    4. Committee meetings will be conducted periodically as determined by the committee. The Committee Chairman shall select the meeting location and time.
  - 1. **Section C  
Meeting Preliminaries**
    2. The agenda and other particulars for a formal meeting shall be distributed by the VOICE Secretary to the members at least 2 days prior to the opening day of the formal meeting.
      - a. The agenda and other particulars for a board meeting shall be distributed by the VOICE President to the members of the Executive Board at least 2 days prior to the opening day of the board meeting.
      - b. The agenda and other particulars for a committee meeting shall be distributed by the Committee Chairman to interested members at least 2 days prior to the opening of the committee meeting.

3. **Section D**  
**Attendance:**
  - a. Attendance at all board meetings is limited to Executive Board members and guests invited by the Executive Board.
  - b. Attendance at all general meetings is open to the public. Membership not required.
  - c. Special "Members Only" meetings may be scheduled by the Executive Board at a date and time other than a regularly scheduled General meeting.
4. **Section E**  
**Proceedings:**

A recording secretary shall be assigned for each meeting. For formal meetings and board meetings, this will be the VOICE Secretary. For committee meetings, the Chairman will appoint a member to record the events in a fashion acceptable to the VOICE Secretary.

**Section F**  
**Restriction:**
  - a. No member or guest of VOICE shall engage in employment recruiting and/or interviewing at and during any meeting.
  - b. Meetings of VOICE shall not be used as a vehicle for direct solicitation of business. To clarify, the Executive Board or a Committee Chairman may from time to time invite a vendor or consultant to a meeting to describe their product and/or service. In this event, the vendor/consultant can describe their product/service and pricing structure to the general membership in attendance, but must avoid direct solicitation for business from individual members during the meeting.
5. **Section G**  
**Meetings:**

The date and location of any meeting to be sponsored by VOICE or by any of its committees must be coordinated with the Vice President and/or Secretary before being formally scheduled or announced.

## **ARTICLE VII COMMITTEES**

1. **Section A**  
**Establishment of Committees:**
  - a. A committee and its charter are established by the President with the approval of the Executive Board.
  - b. The Chairman is appointed by the President with the approval of the Executive Board.
  - c. The Chairman appoints the members of the committee. However, a committee may be as small as one (1) member.
  - d. The Chairman shall keep the Secretary informed, on a timely basis, of the membership and activities of the committee.
  - e. A committee may be dissolved, or its charter modified, or its chairman removed by the President with the approval of the Executive Board.

## **ARTICLE VIII COMMUNICATIONS**

1. **Section A**  
**Distribution:**

The official distribution of information to the members shall be through the Secretary.

**Section B**  
**Nature of Material:**

Material sent to the Secretary for distribution is considered non-proprietary and unclassified. Material is unequivocally subject by the Secretary and VOICE.

**Section C**  
**Library:**

A library of material will be maintained by the Secretary in a manner to be determined by the Executive Board.

**Section D**  
**Communication with the Vendor:**

All official communications between VOICE and the OS/2 vendor, IBM, about matters of VOICE business must be conducted through the VOICE President, or through such individual(s) as he/she may designate.

## **ARTICLE IX PARLIAMENTARY AUTHORITY**

1. **Section A**  
"Robert's Rules of Order" shall prevail except that where they conflict with these bylaws, the bylaws shall govern.

## **ARTICLE X AMENDMENT OF THE BYLAWS**

1. **Section A**  
**Proposals:**  
Amendments to the bylaws may be processed by action of the Executive Board or by a petition to the Secretary of five (5) or more members. Notice of a proposed amendment must be distributed to the membership at least one week prior to the formal meeting at which discussion is expected.  
  
**Section B**  
**Voting Procedure:**  
Amendments to the by-laws shall be voted on at formal meetings. A majority of the votes is required to carry the proposed amendment.  
  
**Section C**  
**Restriction:**  
The VOICE Secretary or other members of the Executive Board may not edit proposals for bylaw amendment.

-----

# VOICE Newsletter - VOICE Code of Ethics

## **Code of Ethics**

The objective of the Code of Ethics is to declare and set forth the means to enforce the minimum ethical conduct expected of all members as professionals. They are the absolute minimum level of conduct required of every member.

Be courteous and respectful to every person I [we] come in contact with when representing VOICE.

Perform my professional activities with honesty and in a way that will enhance my [our] reputation and the reputation of VOICE.

Not knowingly misrepresent VOICE nor will I [we] engage in dishonest or illegal practices.

Build confidence and good will with the public by poise, self-restraint and constructive cooperation.

Not misrepresent my [our] membership, nor assert or imply that VOICE membership is evidence of accreditation or endorsement.

Not write, speak, or act in such a way as to lead another to believe that I [we] officially represent VOICE, unless duly authorized to do so by the officers, or Bylaws of VOICE.

I [we] have read, understand and accept the Code of Ethics as stated

Name: \_\_\_\_\_ Date: \_\_\_\_\_

Download the [Code of Ethics and Application for Membership](#). Please enclose a signed copy of the Code of Ethics with your check and Application for Membership.  
Thank you for supporting VOICE

-----

# VOICE Newsletter - Membership Application



VOICE Home Page: <http://www.os2voice.org>

[\[Newsletter Index\]](#)

[\[Previous Page\]](#) [\[Next Page\]](#)

---

#### VOICEOffline Member Application

Please print off and fill out the application for membership form. After you have read and agree to the terms and conditions of VOICE, send the signed membership form and check, (in US dollars) made payable to VOICE User Group, to:

VOICE  
60 Starling Street  
Kitimat, BC V8C 1K5  
Canada

Your application for membership will be processed upon receipt. Confirmation of receipt and membership number will be sent to your email address as listed. If no e-mail address is supplied, receipt will be sent to your postal address as listed.

-----  
Date: Membership Number: (To be assigned)

First/Last Name:

Company Name:

Address:

City:

State/Region:

Zip/Postal Code:

Country:

Home Phone:

Work Phone:

Fax:

Email Address:

-----

\* Which type of membership are you applying for (choose one)?

- ☐ Individual (US\$25 per year)
- ☐ Corporate (US\$100 per year)
- ☐ Student (US\$10 per year)
- ☐ Senior (US\$10 per year)

\* Which of the following do you classify yourself?

- ☐ Home User
- ☐ SOHO User
- ☐ ISV/Developer
- ☐ Corporate User

\* Which of the following mailing lists do you wish to be added to?

- ☐ VOICE meeting announcements (e-mail)
  - ☐ VOICE news & product announcements (e-mail)
  - ☐ VOICE general discussion (e-mail)
  - ☐ VOICE help discussion (e-mail)
  - ☐ VOICE newsletter (regular mail)
  - ☐ Product announcements and offers from third party vendors (regular mail)
-

## Terms and Conditions

\* By submitting your membership form, you agree to the following:

-I have read and understand the VOICE By-Laws and agree to abide by them.

-I have read and understand the VOICE Code of Ethics and agree to abide by them.

Signature: \_\_\_\_\_ Date: \_\_\_\_\_

-----

# VOICE Newsletter - VOICE Sponsors

## Sponsors

We would like to thank the following companies for their support:

Name	Home page	Description
BMT Micro	<a href="http://www.bmtmicro.com">http://www.bmtmicro.com</a>	BMT Micro is a leading reseller of OS/2 software and provides the OS/2 community with a wide selection of software for any purpose.
GammaTech, Inc.	<a href="http://www.gt-online.com">http://www.gt-online.com</a>	<a href="#">GammaTech IRC</a> and the GammaTech Utilities.
Millennium Technology	<a href="http://www.millennium-technology.com">http://www.millennium-technology.com</a>	Home of the Databook for OS/2 Warp
PillarSoft	<a href="http://www.pillarsoft.net">http://www.pillarsoft.net</a>	Developer of DTB, <a href="#">WarpZip</a> , ShowTime/2 and the Enhanced E Editors
Subsys	<a href="http://www.subsys.de">http://www.subsys.de</a>	Useful things for OS/2 and eComStation. Home of Contact/2, WaveCut, SmartLaunch and many other freeware and shareware programs.
Sundial Systems	<a href="http://www.sundialsystems.com">http://www.sundialsystems.com</a>	Clearlook word processor, DBExpert relational database, <a href="#">Junk Spy</a> , <a href="#">Mesa</a> spread sheet, <a href="#">Relish</a> PIM and <a href="#">Rover Pack</a> WPS navigation

For more information on VOICE sponsorship please refer to our sponsorship information page on the VOICE website - <http://www.os2voice.org/sponsorinfo.html>.

-----